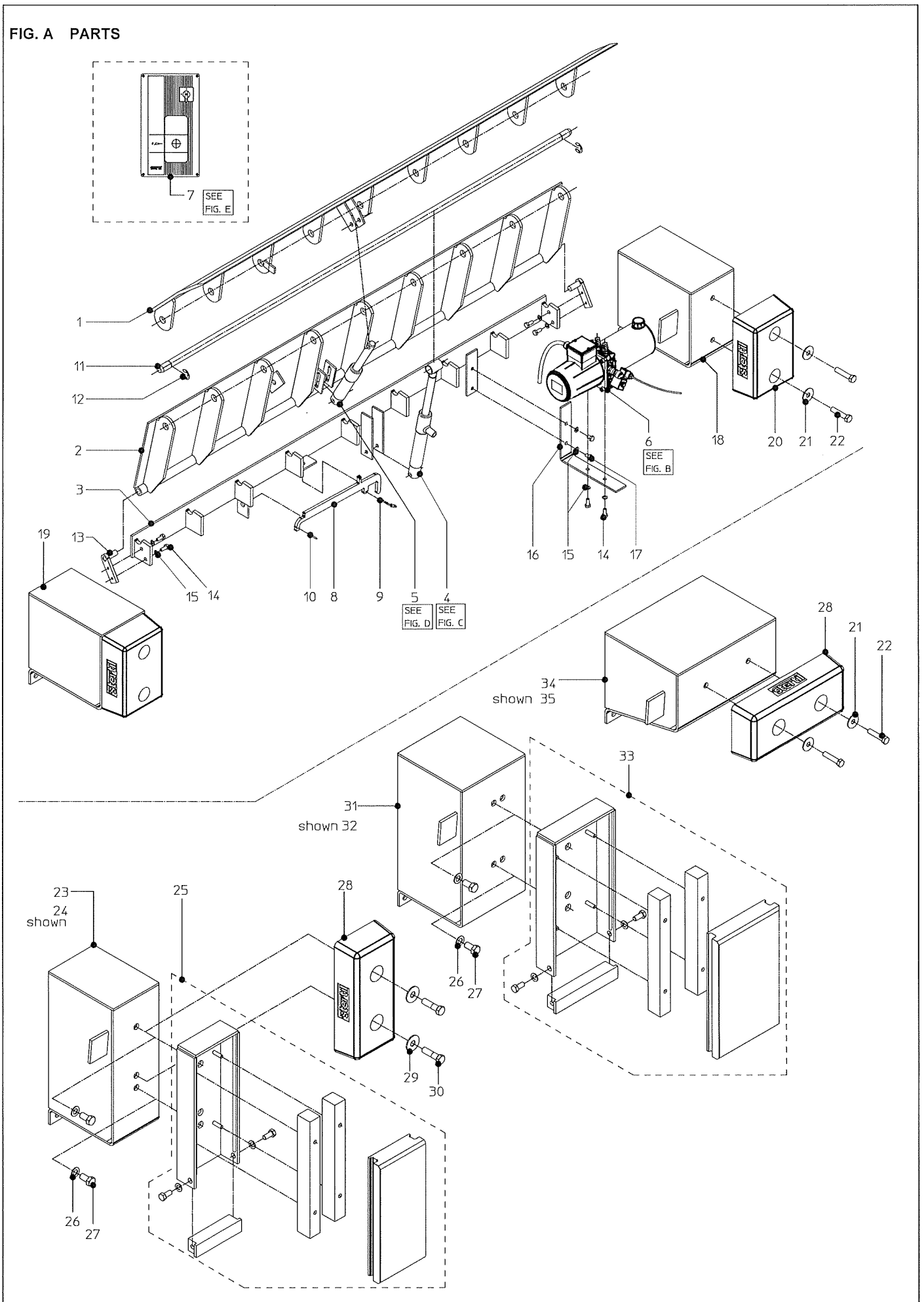




sterdil®

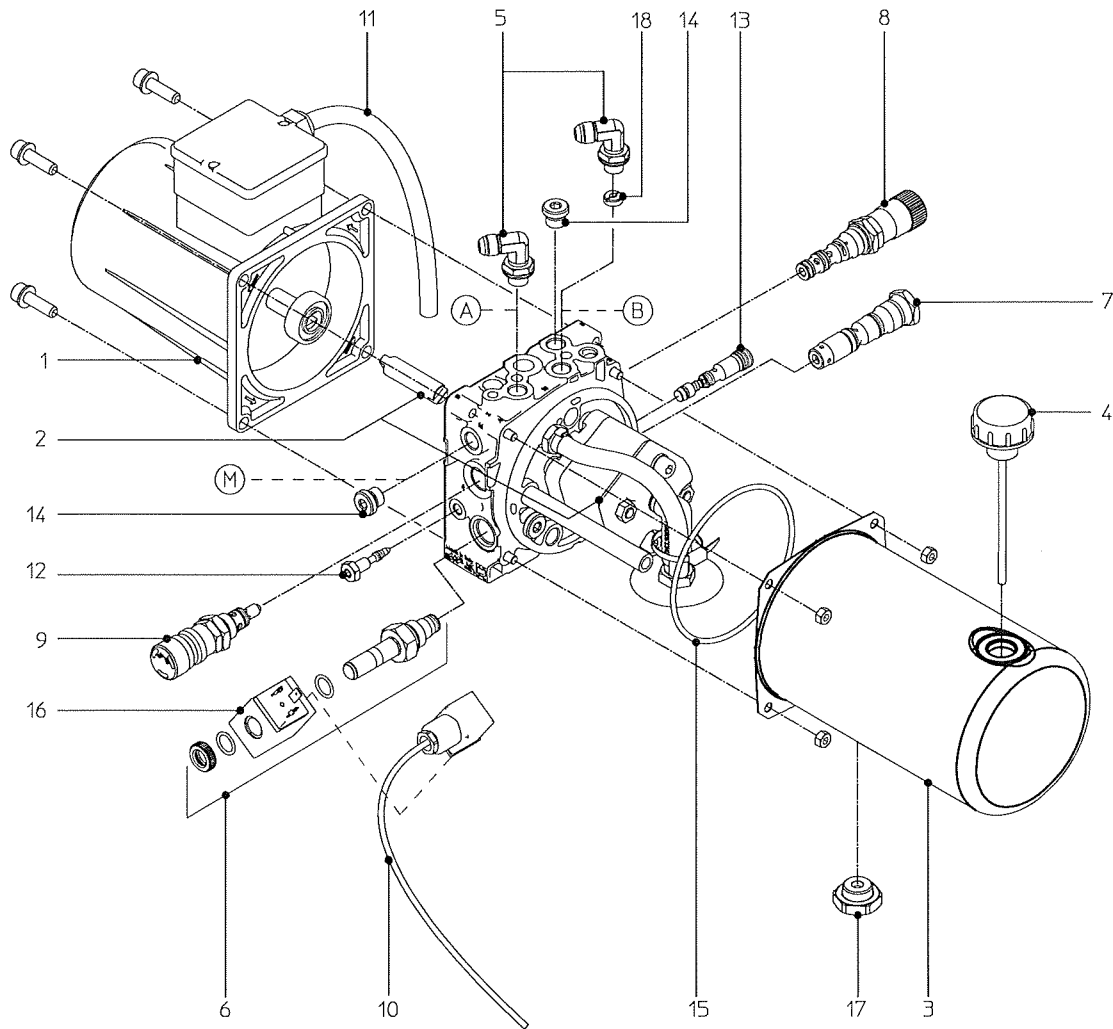
HA DOCK LEVELLER PARTS LIST

FIG. A PARTS



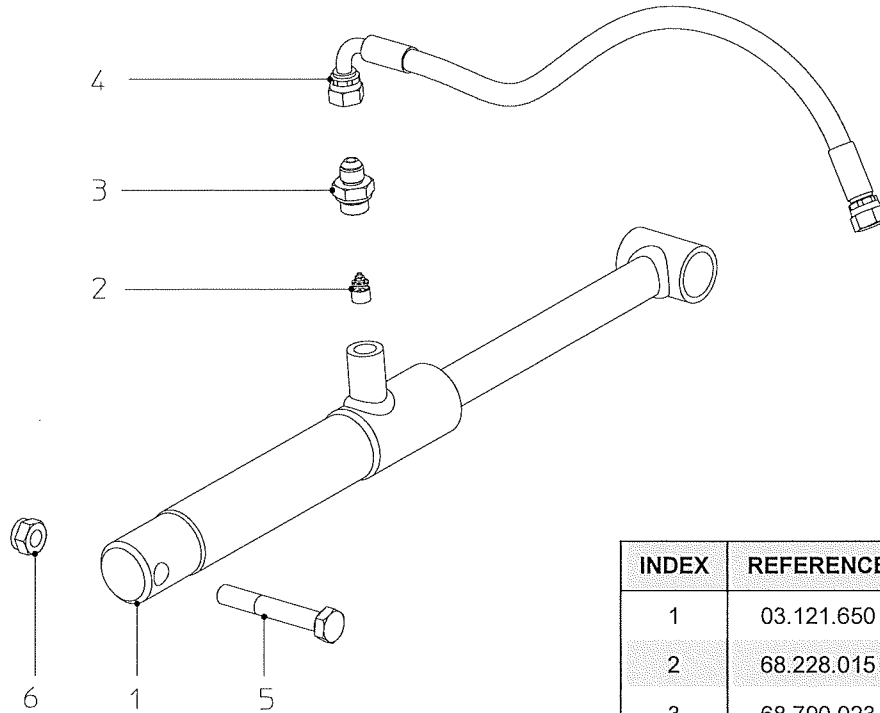
INDEX	REFERENCE	DESCRIPTION
1	03.121.250	Lip HA 72 HP
	03.126.250	Lip HA 72 LP
	03.122.250	Lip HA 2000 HP
	03.127.250	Lip HA 2000 LP
	03.123.250	Lip HA 2110 HP
	03.128.250	Lip HA 2110 LP
2	03.121.200	Deck LA 72
	03.122.200	Deck LA 2000
	03.123.200	Deck LA 2000
3	03.121.150	Rear hinge assembly HA 72
	03.122.150	Rear hinge assembly HA 2000
	03.123.150	Rear hinge assembly HA 2110
4	See Fig. C	Main cylinder
5	See Fig. D	Lip cylinder
6	See Fig. B	Hydraulic unit
7	See Fig. E	Control box
8	03.121.301	Maintenance support
9	00.035.200	Hairpin
10	65.077.101	Spring pin
11	03.110.002	Hinge rod HA 72
	03.112.002	Hinge rod HA 2000
	03.113.002	Hinge rod HA 2110
12	65.062.036	Retaining ring
13	03.110.050	Pivot plate
14	65.003.405	Bolt
15	65.058.028	Spring washer
16	03.121.001	Support hydraulic unit
17	65.003.401	Bolt
18	03.110.325	Console 'Standard' Right
19	03.110.375	Console 'Standard' Left
20	00154356	Bumper 'R30-20-10'
21	65.055.432	Washer
22	65.002.537	Bolt
23	03112973	Console 'PE' Left
24	03112972	Console 'PE' Right
25	03.860.000	Bumper 'PE 220'
26	65.055.028	Washer
27	65.00.3607	Bolt
28	00.920.680	Bumper 'R45-20-10'
29	65.055.436	Washer
30	65.002.614	Bolt
31	03.112.953	Console 'PE excentric' Left
32	03.112.952	Console 'PE excentric' Right
33	03.860.300	Bumper 'PE 300'
34	03.110.725	Console 'Optional' Left
35	03.110.775	Console 'Optional' Right

FIG. B HYDRAULIC UNIT



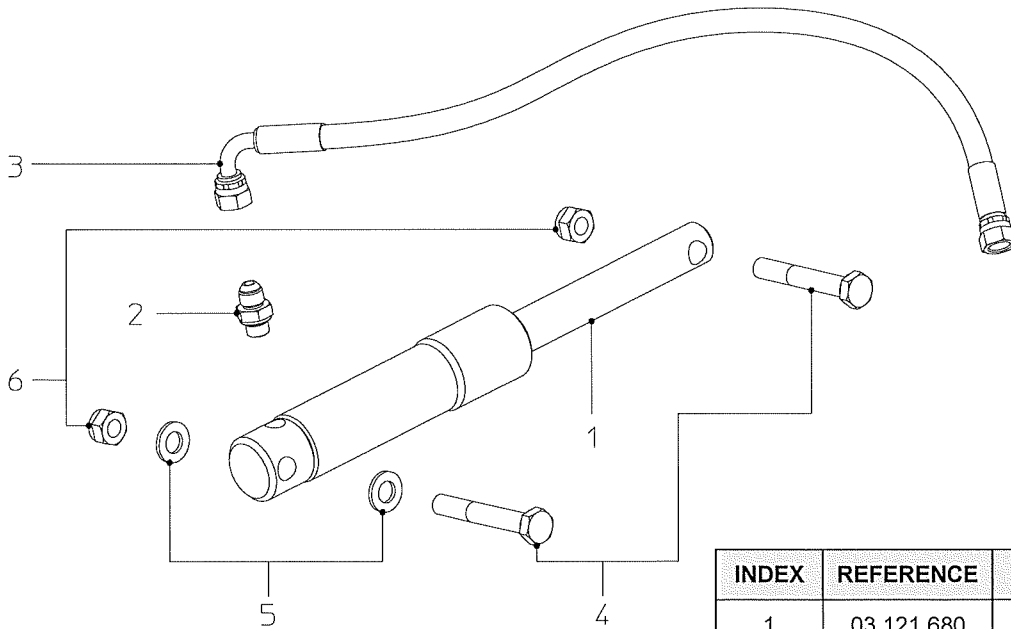
INDEX	REFERENCE		DESCRIPTION
Serial nr.	<=194163	>194163 (11/2012)	
	03.121.630	03.121.640	Motor pump unit assembly (excl. fittings)
1	03.121.600		Electro-motor
2	06.000.613		Coupling
2a	06.010.612		Pump
3	03.121.632		Tank
4	02.335.634		Breather cap with dip stick
5	01.810.502		Adaptor
6	68.308.002		Stop valve (incl. coil)
7	02.335.666		Special valve (A-port)
8	02.335.667	06.000.627	Sequence valve
9	68.039.020		Pressure relief valve
10	03.121.701		Control cable
11	03.121.702		Motor cable
12	06.000.614	06.000.626	Throttle
13	02.335.670	06.000.628	Special valve (B-port)
14	02.335.663		Plug
15	02.335.622		O-ring tank
16	69.481.501		Coil
17	02.335.623		Drain plug
18	02.335.664		Orifice

FIG. C MAIN CYLINDER



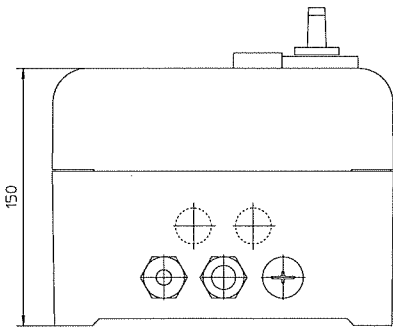
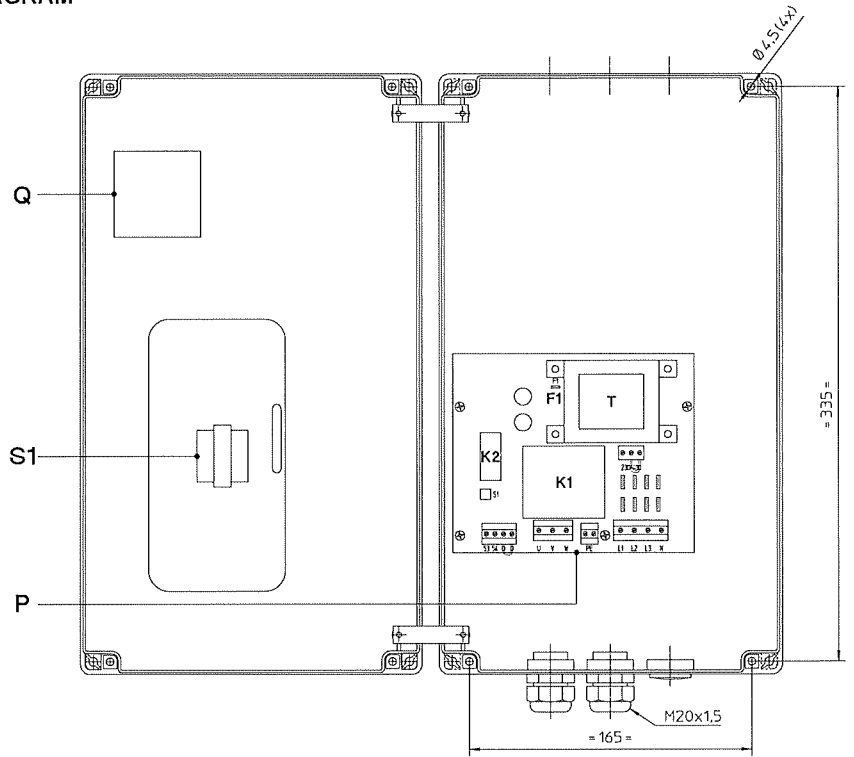
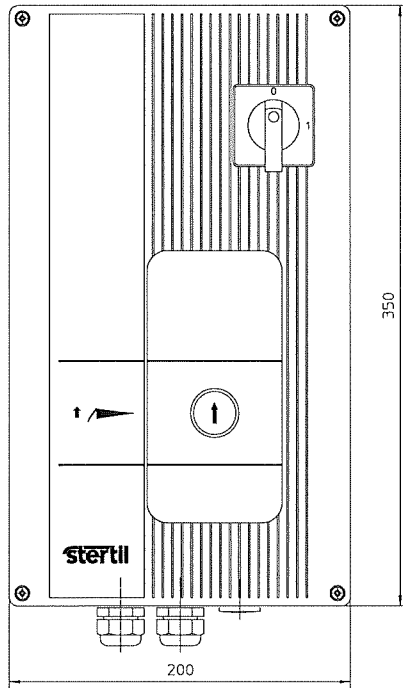
INDEX	REFERENCE	DESCRIPTION
1	03.121.650	Main cylinder
2	68.228.015	Safety valve
3	68.790.023	Adaptor
4	03.121.602	Hose main cylinder
5	65.002.457	Bolt
6	65.051.036	Self locking nut

FIG. D LIP CYLINDER

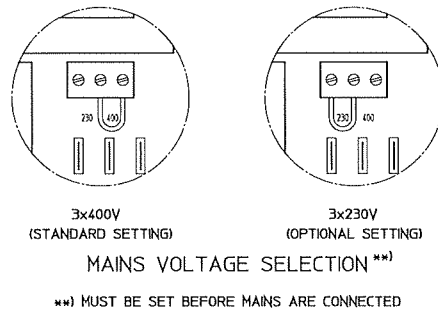
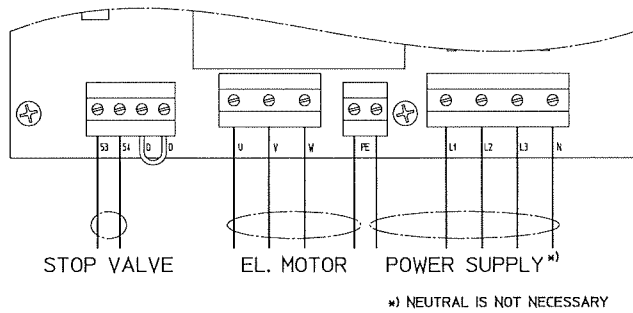


INDEX	REFERENCE	DESCRIPTION
1	03.121.680	Lip cylinder
2	68.790.028	Adaptor
3	03.121.601	Hose lip cylinder
4	65.002.457	Bolt
5	65.055.021	Washer
6	65.051.036	Self locking nut

FIG. E CONTROL BOX AND CONNECTION DIAGRAM

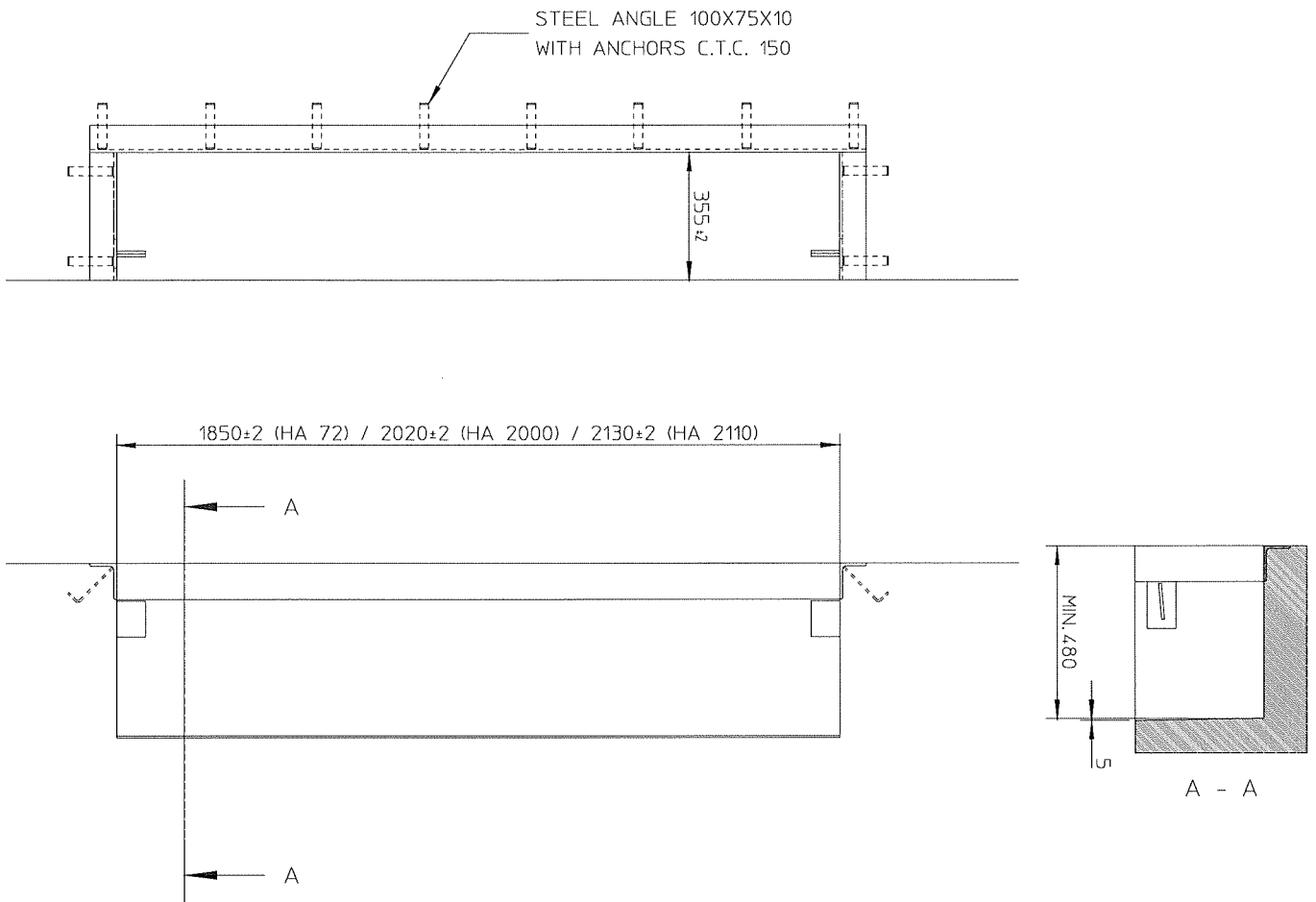


(Picture may differ from actual design)
 For spare parts and additional information refer to the manual of the SSC/SMC-control box, which is available



Index	Reference	Description	Index	Reference	Description
	06050700	Control box (complete)	P	69900270	PCB basic 230/400V
	06050702	Cover (without Q and S1)	F1	-	Automatic fuse
Q	69120038	Main/emergency switch	T	-	Transformer
K1	-	Magnetic switch	S1	69141131	Switch (complete)

FIG. I PIT LAYOUT



INDEX	REFERENCE	DESCRIPTION
1	03.110.550	Pit frame HA 1830 (former 72)
	03.112.550	Pit frame HA 2000
	03.113.550	Pit frame HA 2110