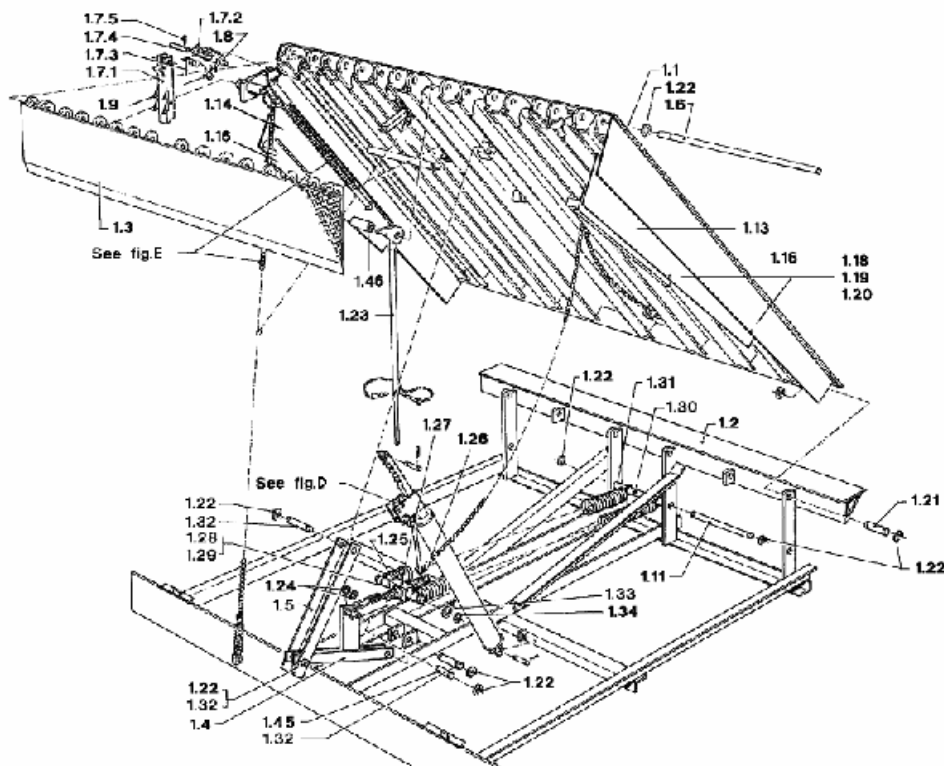




Dock Leveller ME & MK Models

Spare Parts List



POS.	DESCRIPTION	CODE	ME 608	ME 708	ME 600	ME 700	MK 608	MK 708	MK 600	MK 700
1.1	Ramp assembly		01.436.000	01.446.000	01.456.000	01.466.000	01.431.000	01.441.000	01.451.000	01.461.000
1.2	Subframe assembly		01.437.000	01.447.000	01.457.000	01.467.000	01.432.000	01.442.000	01.452.000	01.462.000
1.3	Lip assembly		02.213.000	02.223.000	02.213.000	02.223.000	02.213.000	02.223.000	02.213.000	02.223.000
1.4	Arm lower		01.435.630	01.435.630						
1.5	Arm upper		01.435.640	01.435.640						
1.6	Lip rod		01.410.014	01.420.014	01.410.014	01.420.014	01.410.014	01.420.014	01.410.014	01.420.014
1.7	C.T.L. assembly		01.410.140	01.410.140	01.410.140	01.410.140	01.410.140	01.410.140	01.410.140	01.410.140
1.7.1	C.T.L. sub-assembly		01.410.145	01.410.145	01.410.145	01.410.145	01.410.145	01.410.145	01.410.145	01.410.145
1.7.2	C.T.L. support		01.410.150	01.410.150	01.410.150	01.410.150	01.410.150	01.410.150	01.410.150	01.410.150
1.7.3	C.T.L. spring		00.030.195	00.030.195	00.030.195	00.030.195	00.030.195	00.030.195	00.030.195	00.030.195
1.7.4	Clevis pin		01.410.101	01.410.101	01.410.101	01.410.101	01.410.101	01.410.101	01.410.101	01.410.101
1.7.5	Cotter pin	4x32 DIN 94	65.074.216	65.074.216	65.074.216	65.074.216	65.074.216	65.074.216	65.074.216	65.074.216
1.8	Washer spring	M12 DIN127	65.058.032	65.058.032	65.058.032	65.058.032	65.058.032	65.058.032	65.058.032	65.058.032
1.9	Nut	M12 DIN 934	65.050.136	65.050.136	65.050.136	65.050.136	65.050.136	65.050.136	65.050.136	65.050.136
1.10	B.D.C. chain assembly									
1.11	Pin		01.435.031	01.435.031						
1.12	Toeguard									
1.13	Sliding lamel left		01.430.043	01.430.043	02.250.015	02.250.015	01.430.043	01.430.043	02.250.015	02.250.015
1.14	Sliding lamel right		01.430.044	01.430.044	02.250.016	02.250.016	01.430.044	01.430.044	02.250.016	02.250.016
1.16	Sliding lamel		01.430.045	01.430.045	02.250.017	02.250.017	01.430.045	01.430.045	02.250.017	02.250.017
1.17	Black/yellow tape		90.899.024	90.899.024	90.899.024	90.899.024	90.899.024	90.899.024	90.899.024	90.899.024
1.18	Bolt	M10 x 25 BZKT	65.025.014	65.025.014	65.025.014	65.025.014	65.025.014	65.025.014	65.025.014	65.025.014
1.19	Washer	M10 Galv.	65.055.712	65.055.712	65.055.712	65.055.712	65.055.712	65.055.712	65.055.712	65.055.712
1.20	Nut	M10 DIN 985	65.051.034	65.051.034	65.051.034	65.051.034	65.051.034	65.051.034	65.051.034	65.051.034
1.21	Hinge pin		01.410.011	01.410.011	01.410.011	01.410.011	01.410.011	01.410.011	01.410.011	01.410.011
1.22	Retaining ring	DIN 6799	65.062.036	65.062.036	65.062.036	65.062.036	65.062.036	65.062.036	65.062.036	65.062.036
1.23	Maintenance strut		01.410.050	01.410.050	01.410.050	01.410.050	01.410.050	01.410.050	01.410.050	01.410.050
1.24	Bearing		01.435.035	01.435.035						
1.25	Spring	P/N 705-624	00.705.624	00.705.624						
1.26	Arm adjustment		01.435.620	01.435.620						
1.27	Bracket adjustment		01.435.040	01.435.040						
1.28	Nut	M16 DIN 934	65.050.140	65.050.140						
1.29	Washer	M16 DIN 125-A	65.055.216	65.055.216						
1.30	Spacer tube		01.435.032	01.435.032						
1.31	Spacer tube		01.435.033	01.435.033						
1.32	Hinge pin		01.435.036	01.435.036						
1.33	Washer	M33 DIN 125-A	65.055.038	65.055.038						
1.34	Retaining ring	DIN 471	65.060.032	65.060.032						
1.35	Power pack				01.455.100	01.455.100	01.434.100	01.434.100	01.454.100	01.454.100
1.36	Pull rod assembly				01.450.200	01.450.200	01.430.200	01.430.200	01.450.200	01.450.200
1.37	Pin				00.035.256	00.035.256	00.035.256	00.035.256	00.035.256	00.035.256
1.38	Bearing				01.410.027	01.410.027	01.410.027	01.410.027	01.410.027	01.410.027
1.39	Roll bearing	SKF 51107			01.460.029	01.460.029			01.460.029	01.460.029
1.40	Nut				01.410.026	01.410.026	01.410.026	01.410.026	01.410.026	01.410.026
1.41	Bolt	M20x40 DIN 933			65.003.607	65.003.607	65.003.607	65.003.607	65.003.607	65.003.607
1.42	Washer	M20 DIN 125-A			65.055.222	65.055.222	65.055.222	65.055.222	65.055.222	65.055.222
1.43	Nut	M20 DIN 934			65.050.144	65.050.144	65.050.144	65.050.144	65.050.144	65.050.144
1.44	Washer	M20 DN127			65.058.044	65.058.044	65.058.044	65.058.044	65.058.044	65.058.044
1.45	Hinge pin		01.435.037	01.435.037						
1.46	Spacer		01.410.055	01.410.055	01.410.055	01.410.055	01.410.055	01.410.055	01.410.055	01.410.055

FIG. A

Dek-, Subframe-, lip- en steunsamenstelling, ME 608 & 708
Deck, Untergestell, Lippe- und Stützensamenstellung, ME 608 & 708
Parts of subframe, lip and deck, ME 608 & 708
Composition du pont, du châssis inférieur, de la levre et du support, ME 608 & 708

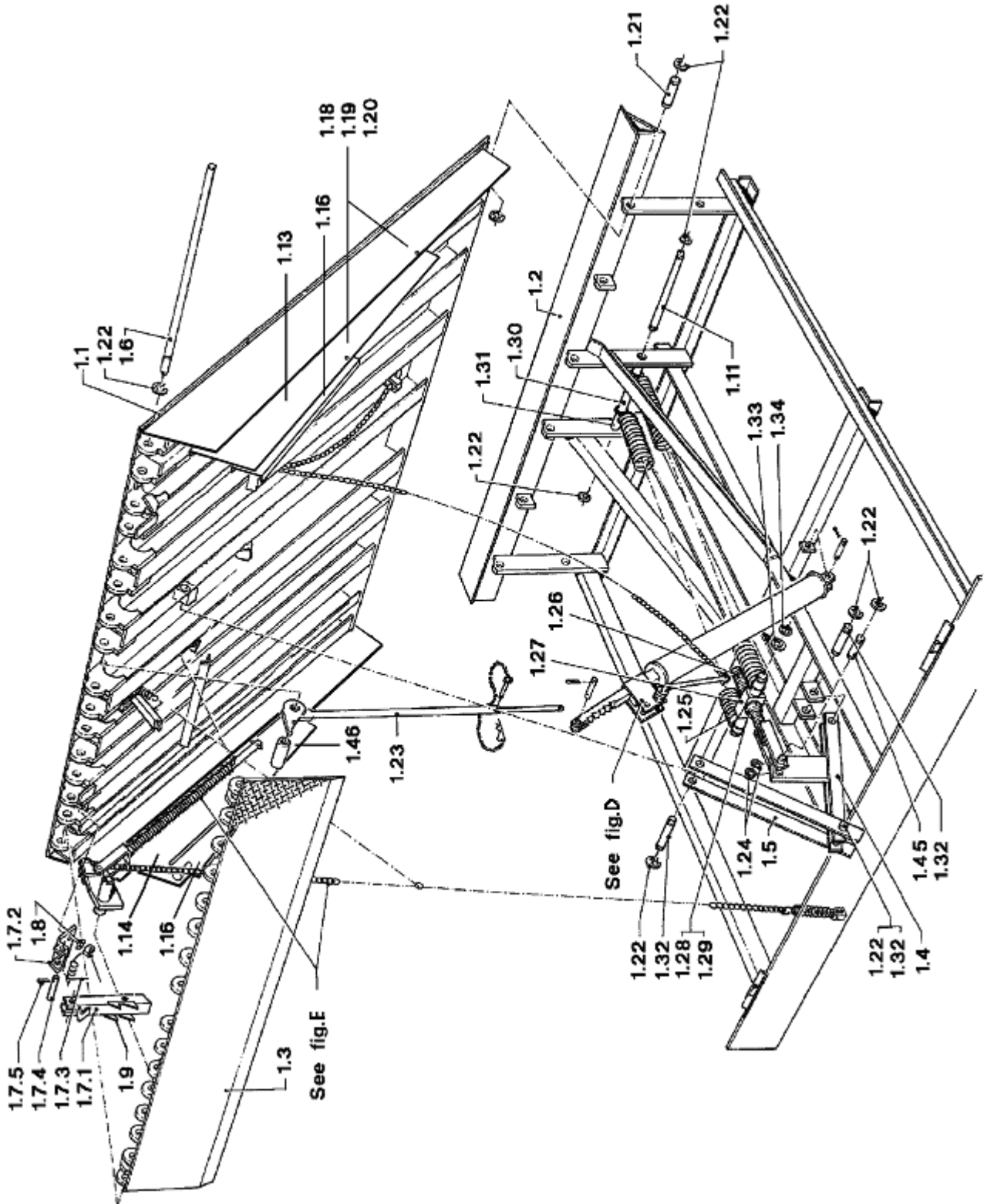


FIG. B

Dek-, Subframe-, lip- en steunsamenstelling, ME 600 & 700
Deck, Untergestell, Lippe- und Stützensamenstellung, ME 600 & 700
Parts of subframe, lip and deck, ME 600 & 700
Composition du pont, du châssis inférieur, de la levre et du support, ME 600 & 700

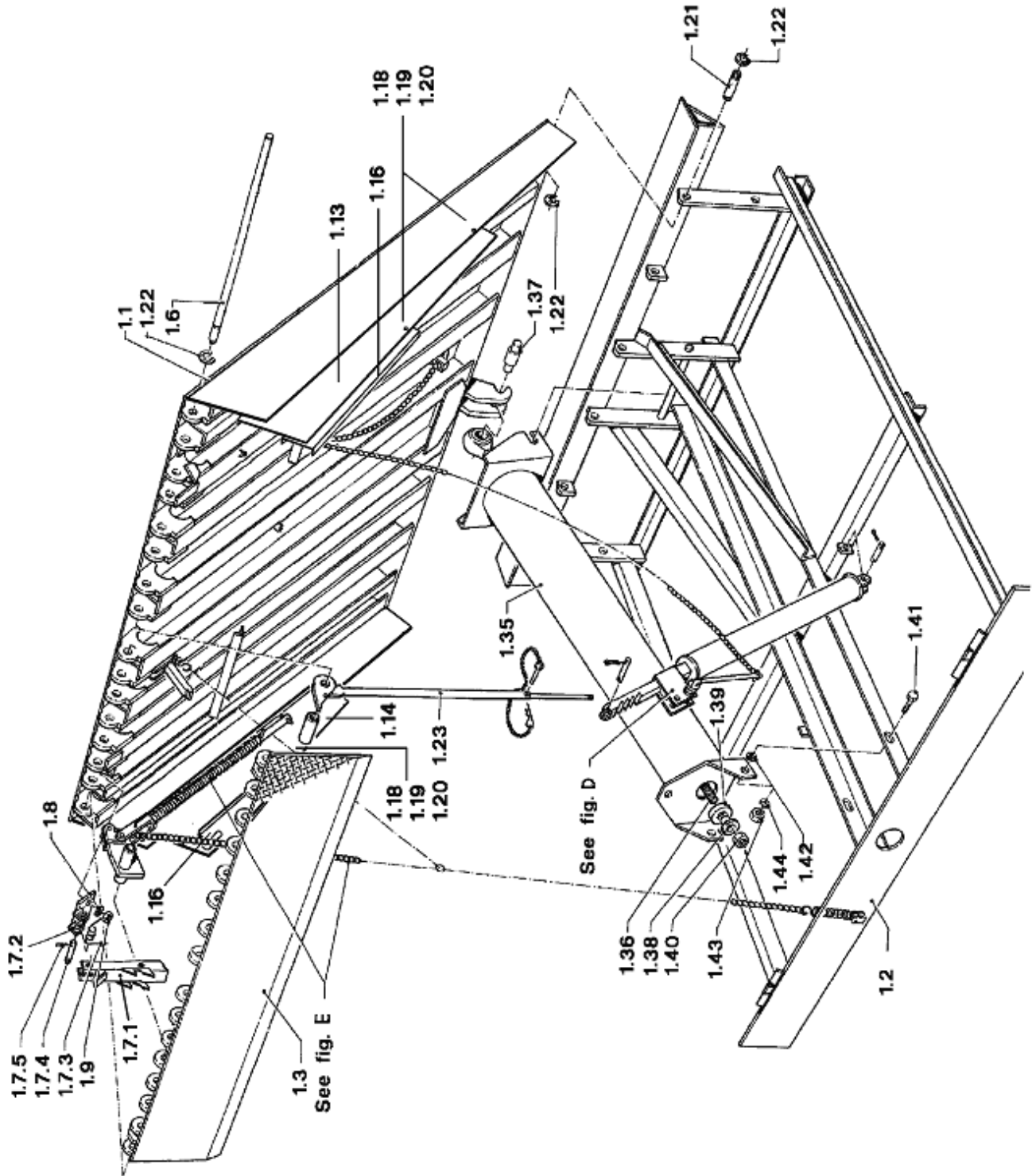


FIG. C

Dek-, Subframe-, lip- en steunsamenstelling, MK 608, 708, 600 & 700
Deck, Untergestell, Lippe- und Stützensamenstellung, MK 608, 708, 600 & 700
Parts of subframe, lip and deck, MK 608, 708, 600 & 700
Composition du pont, du châssis inférieur, de la levre et du support, MK 608, 708, 600 & 700

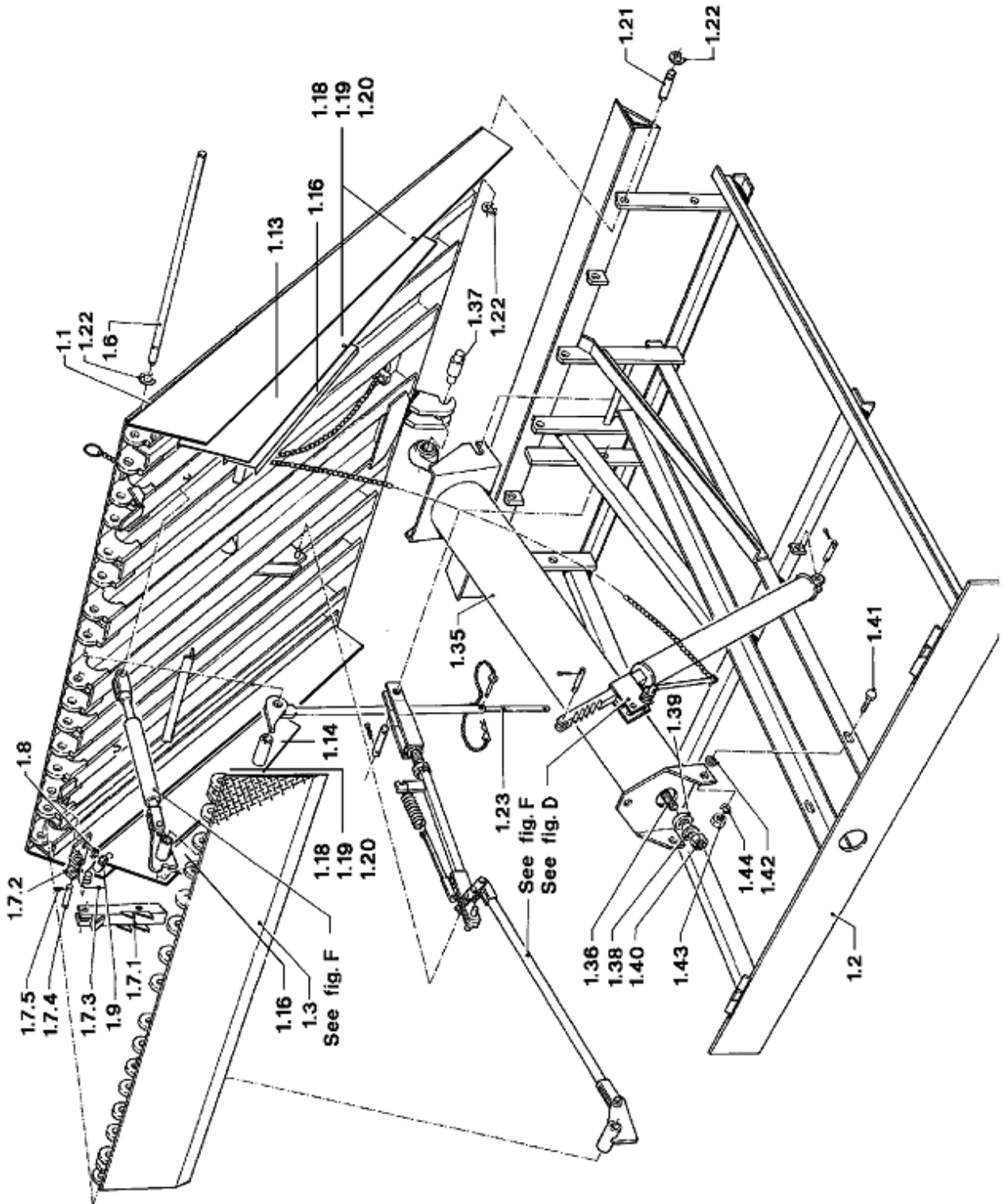


FIG. D

**Holdown samenstelling ME, MK
Niederhaltermechanismus ME, MK
Holdown assembly ME, MK
Composition du 'Holdown' ME, MK**

POS.	DESCRIPTION	ME 608	ME 708	ME 600	ME 700	MK 608	MK 708	MK 600	MK 700
2.1	Holdow assembly	00.012.104	00.012.104	00.012.104	00.012.104	00.012.104	00.012.104	00.012.104	00.012.104
2.1.1	Holdown sub assembly	00.015.080	00.015.080	00.015.080	00.015.080	00.015.080	00.015.080	00.015.080	00.015.080
2.1.2	Release handle	00.118.045	00.118.045	00.118.045	00.118.045	00.118.045	00.118.045	00.118.045	00.118.045
2.1.3	Pawl lifter	00.118.038	00.118.038	00.118.038	00.118.038	00.118.038	00.118.038	00.118.038	00.118.038
2.1.4	Pin keeper	00.035.259	00.035.259	00.035.259	00.035.259	00.035.259	00.035.259	00.035.259	00.035.259
2.1.5	Pin shoulder	00.035.258	00.035.258	00.035.258	00.035.258	00.035.258	00.035.258	00.035.258	00.035.258
2.1.6	Pawl	00.109.012	00.109.012	00.109.012	00.109.012	00.109.012	00.109.012	00.109.012	00.109.012
2.1.7	Pawl spring	00.101.086	00.101.086	00.101.086	00.101.086	00.101.086	00.101.086	00.101.086	00.101.086
2.1.8	Bolt	65.002.296	65.002.296	65.002.296	65.002.296	65.002.296	65.002.296	65.002.296	65.002.296
2.1.9	Pin	00.035.133	00.035.133	00.035.133	00.035.133	00.035.133	00.035.133	00.035.133	00.035.133
2.1.10	Lock nut	65.051.028	65.051.028	65.051.028	65.051.028	65.051.028	65.051.028	65.051.028	65.051.028
2.1.11	Pin cotter	65.074.146	65.074.146	65.074.146	65.074.146	65.074.146	65.074.146	65.074.146	65.074.216
2.1.12	Sleeve	00.043.051	00.043.051	00.043.051	00.043.051	00.043.051	00.043.051	00.043.051	00.043.051
2.1.13	Spring	00.030.114	00.030.114	00.030.114	00.030.114	00.030.114	00.030.114	00.030.114	00.030.114
2.1.14	Handle return spring	00.030.142	00.030.142	00.030.142	00.030.142	00.030.142	00.030.142	00.030.142	00.030.142
2.1.15	Sleeve	00.043.060	00.043.060	00.043.060	00.043.060	00.043.060	00.043.060	00.043.060	00.043.060
2.2	Rachet bar	00.084.028	00.084.028	00.084.028	00.084.028	00.084.028	00.084.028	01.010.012	01.010.012
2.3	Holdown release chain assembly	00.032.106	00.032.106	00.032.156	00.032.156	00.032.106	00.032.106	00.032.156	00.032.156
2.4	Roll pin	00.035.373	00.035.373	00.035.373	00.035.373	00.035.373	00.035.373	00.035.373	00.035.373
2.5	Pulley	00.048.999	00.048.999	00.048.999	00.048.999	00.048.999	00.048.999	00.048.999	00.048.999
2.6	Clevis pin	00.035.161	00.035.161	00.035.161	00.035.161	00.035.161	00.035.161	00.035.161	00.035.161
2.7	Clevis pin	00.035.257	00.035.257	00.035.257	00.035.257	00.035.257	00.035.257	00.035.257	00.035.257
2.8	Cotter pin	65.074.146	65.074.146	65.074.146	65.074.146	65.074.146	65.074.146	65.074.146	65.074.146

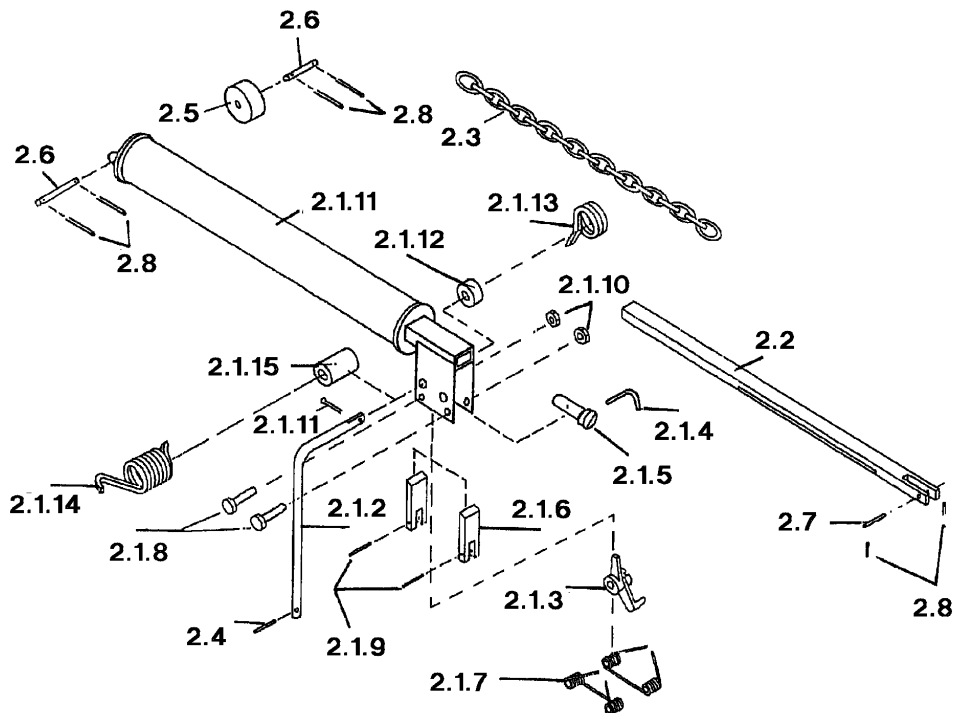


FIG. E

Lipuitklapmechanisme ME
Lippenausklappmechanismus ME
Liplifter assembly ME
Mécanisme de relèvement de la languette ME

POS.	DESCRIPTION	ME 608	ME 708	ME 600	ME 700
3.1	Lip lifter	01.435.250	01.435.250	01.435.250	01.435.250
3.2	Lip lifter chain assembly	01.435.600	01.435.600	01.470.600	01.470.600
3.2.1	Spring	00.030.193	00.030.193	00.030.193	00.030.193
3.2.2	Chain	01.435.617	01.435.617	01.470.617	01.470.617
3.2.3	Chain	00.218.021	00.218.021	00.218.021	00.218.021
3.2.4	Spring	00.030.194	00.030.194	00.030.194	00.030.194
3.2.5	S-hook	00.000.181	00.000.181	00.000.181	00.000.181
3.2.6	Latch	00.028.084	00.028.084	00.028.084	00.028.084
3.2.7	Clamp	00.920.439	00.920.439	00.920.439	00.920.439
3.3	Push rod assembly	01.435.235	01.435.235	01.435.235	01.435.235
3.3.1	Roll pin	65.077.218	65.077.218	65.077.218	65.077.218
3.4	Bussing	01.435.038	01.435.038	01.435.038	01.435.038 </td
3.5	Roll pin	65.077.209	65.077.209	65.077.209	65.077.209
3.6	Clevis pin	00.035.161	00.035.161	00.035.161	00.035.161
3.7	Clevis pin	00.035.257	00.035.257	00.035.257	00.035.257
3.8	Cotter pin	65.074.146	65.074.146	65.074.146	65.074.146

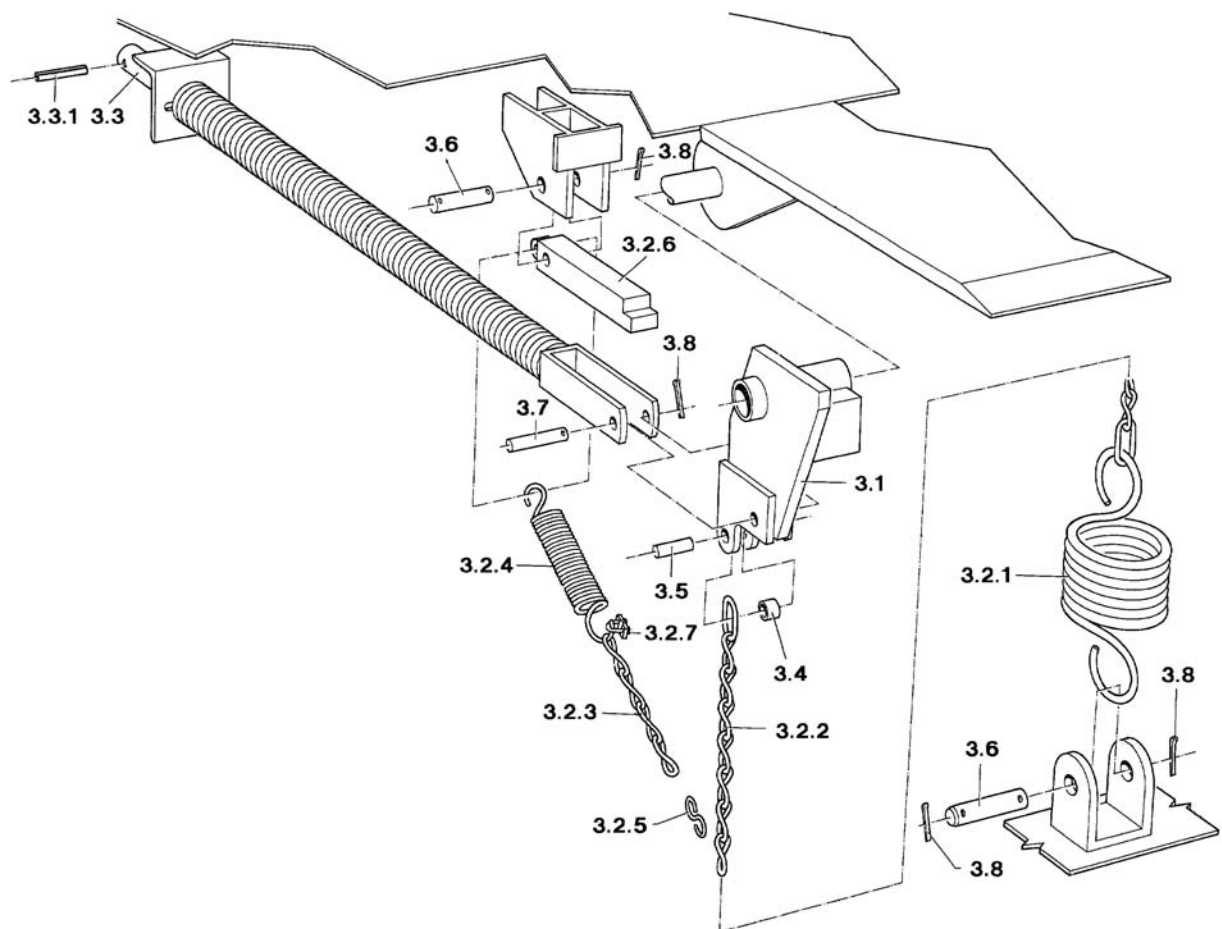


FIG. F

Lipuitklapmechanisme MK
Lippenausklappmechanismus MK
Walk-down assembly MK
Mécanisme de relèvement de la languette MK

POS.	DESCRIPTION	MK 608	MK 708	MK 600	MK 700
4.1	Lip lifter	01.410.250	01.420.250	01.420.250	01.420.250
4.2	Pin	01.410.024	01.410.024	01.410.024	01.410.024
4.3	Cotter pin	65.074.216	65.074.216	65.074.216	65.074.216
4.4	Connecting rod	01.430.300	01.430.300	01.450.300	01-450-300
4.5	Roller	01.410.013	01.410.013	01.410.013	01.410.013
4.6	Washer	65.055.212	65.055.212	65.055.212	65.055.212
4.7	Link assembly	01.410.275	01.410.275	01.410.275	01.410.275
4.8	Bolt	00.035.400	00.035.400	00.035.400	00.035.400
4.9	Lock nut	00.000.035	00.000.035	00.000.035	00.000.035
4.10	Clipring	00.049.060	00.049.060	00.049.060	00.049.060
4.11	Push bar assembly 16" and 18" lip	00.705.213	00.705.213	00.705.213	00.705.213
	Push bar assembly 20" lip	01.419.161			
4.12	Clevis pin	00.035.161	00.035.161	00.035.161	00.035.161
4.13	Cotter pin	65.074.146	65.074.146	65.074.146	65.074.146
4.14	Gasspring assembly	01.410.375	01.410.375	01.410.375	01.410.375
4.15	Lip assist assembly	01.410.330	01.410.330	01.410.330	01.410.330

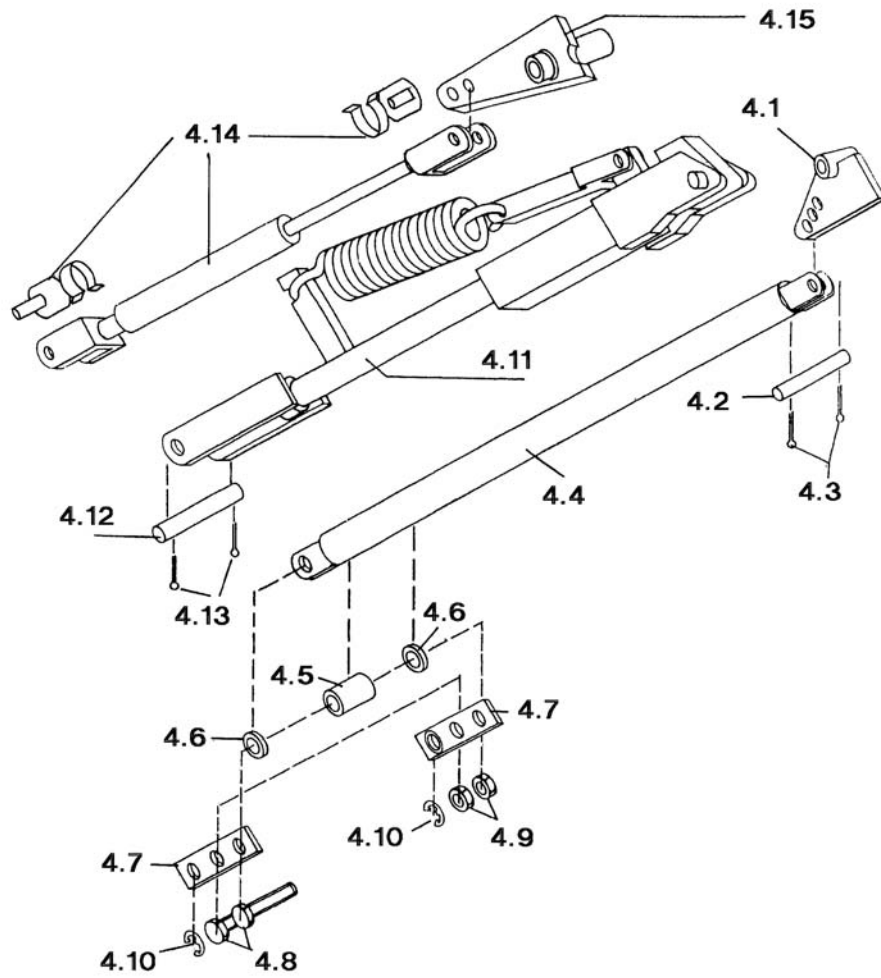
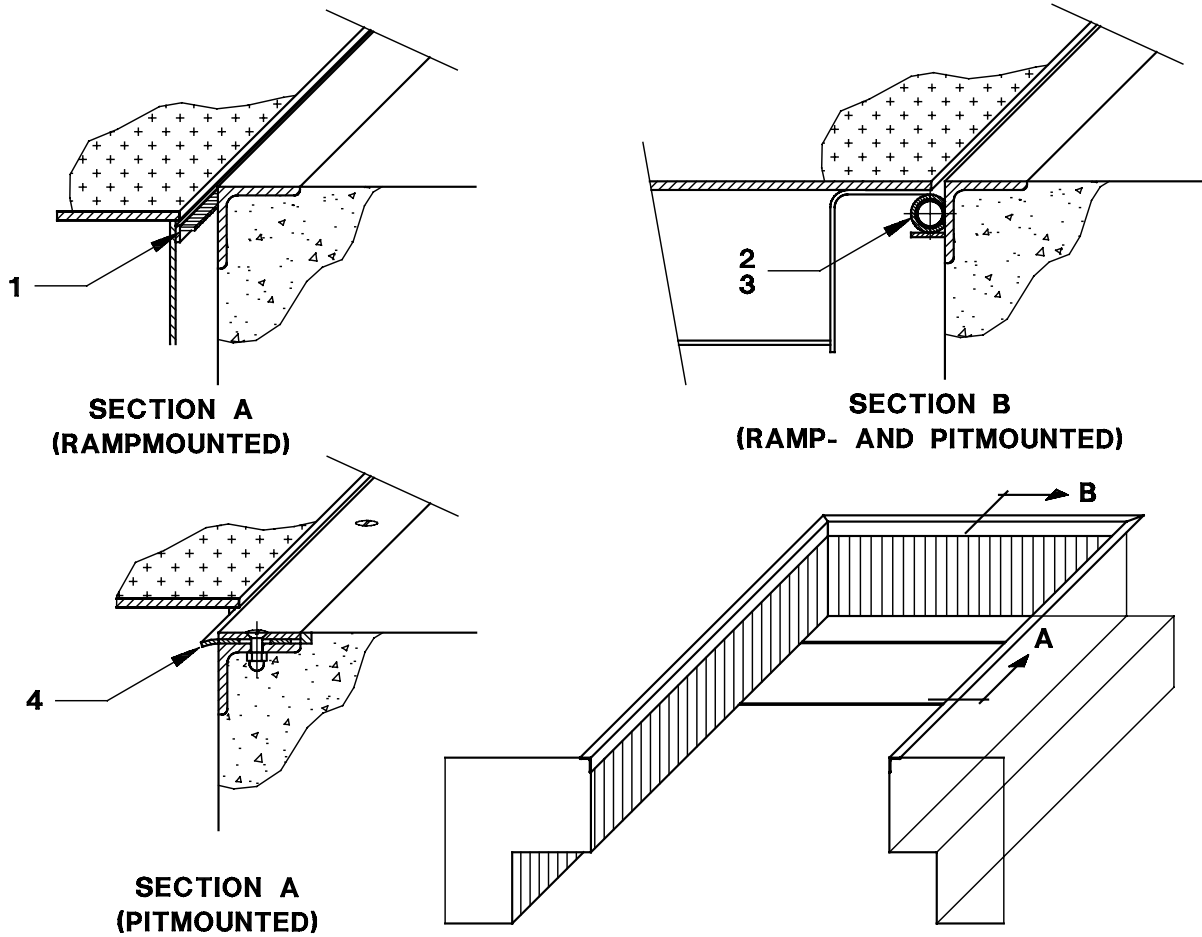


FIG. G - WEATHERSEALS

INDEX	REFERENCE/TOTAL No. REQUIRED								DESCRIPTION
	ME, MK 608		ME, MK 708		ME, MK 600		ME, MK 700		
1	02.219.912	4x	02.219.912	4x	02.219.912	5x	02.219.912	5x	Rampmounted weatherseal brush length 1000 mm
2	00.089.015	1x	-		00.089.015	1x	-		Rearhinge weatherseal
3	-		00.089.016	1x	-		00.089.016	1x	Rearhinge weatherseal
4	00.931.091	2x	00.931.091	2x	00.931.092	2x	00.931.092	2x	Pitmounted weatherseal



OPTION - SPECIAL LIPS

	LIP ASSEMBLY		LIP ASSIST ASSY. MK TYPE	PUSH ROD ASSEMBLY ME TYPE
	608/600	708/700		
Lip 400 mm	01.413.000	01.423.000	01.410.330	00.037.160
Lip 450 mm (not for ME 608 and 708)	01.419.010	01.429.010	01.410.330	00.037.160