



Dock Leveller HS Model

Spare Parts List

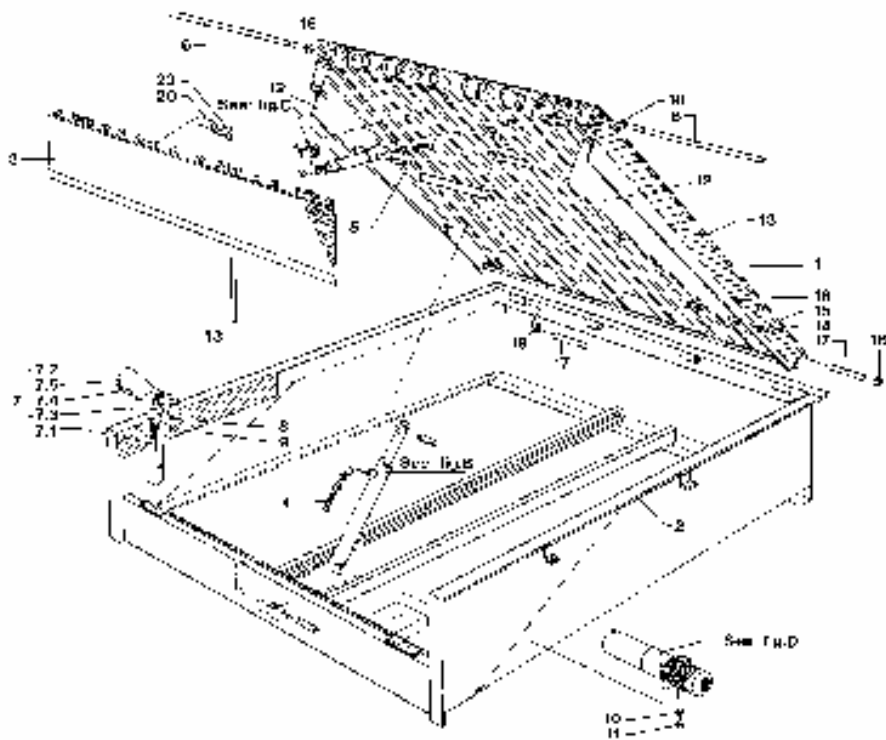


FIG. A – PARTS OF SUBFRAME, LIP AND DECK

IN DEX	REFERENCE															DESCRIPTION
	HS 2017	HS 2517	HS 3017	HS 3517	HS 4017	HS 2020	HS 2520	HS 3020	HS 3520	HS 4020	HS 2021	HS 2521	HS 3021	HS 3521	HS 4021	
1	02.305.100	02.310.100	02.315.100	02.320.100	02.325.100	02.330.100	02.335.100	02.340.100	02.345.100	02.350.100	02.355.100	02.360.100	02.365.100	02.370.100	02.375.100	Deck
2	02.305.225	02.310.225	02.315.225	02.320.200	02.325.200	02.330.225	02.335.225	02.340.225	02.345.200	02.350.200	02.355.225	02.360.225	02.365.225	02.370.200	02.375.200	Subframe (Standard)
2	02.305.515	02.310.515	02.315.515	02.320.510	02.325.510	02.330.515	02.335.515	02.340.515	02.345.510	02.350.510	02.355.515	02.360.515	02.365.515	02.370.510	02.375.510	Subframe (Quick
3	02.305.300	02.305.300	02.305.300	02.305.300	02.305.300	02.335.300	02.335.300	02.335.300	02.335.300	02.335.300	02.223.000	02.223.000	02.223.000	02.223.000	02.223.000	Lip
4	01.510.426	01.510.426	01.510.426	01.510.426	01.510.426	01.510.426	01.510.426	01.510.426	01.510.426	01.510.426	01.510.426	01.510.426	01.510.426	01.510.426	01.510.426	Hose main cylinder
5	02.335.601	02.335.601	02.335.601	02.335.601	02.335.601	02.335.601	02.335.601	02.335.601	02.335.601	02.335.601	02.335.601	02.335.601	02.335.601	02.335.601	02.335.601	Hose lip cylinder
6	02.305.014	02.305.014	02.305.014	02.305.014	02.305.014	02.335.014	02.335.014	02.335.014	02.335.014	02.335.014	01.420.014	01.420.014	01.420.014	02.335.014	02.335.014	Lip shaft
7	01.410.110	01.410.110	01.410.110	01.410.110	01.410.110	01.410.110	01.410.110	01.410.110	01.410.110	01.410.110	01.410.110	01.410.110	01.410.110	01.410.110	01.410.110	CTL support assembly
7.1	01.410.130	01.410.130	01.410.130	01.410.130	01.410.130	01.410.130	01.410.130	01.410.130	01.410.130	01.410.130	01.410.130	01.410.130	01.410.130	01.410.130	01.410.130	Support
7.2	01.410.150	01.410.150	01.410.150	01.410.150	01.410.150	01.410.150	01.410.150	01.410.150	01.410.150	01.410.150	01.410.150	01.410.150	01.410.150	01.410.150	01.410.150	Support
7.3	00.030.195	00.030.195	00.030.195	00.030.195	00.030.195	00.030.195	00.030.195	00.030.195	00.030.195	00.030.195	00.030.195	00.030.195	00.030.195	00.030.195	00.030.195	Spring
7.4	01.410.101	01.410.101	01.410.101	01.410.101	01.410.101	01.410.101	01.410.101	01.410.101	01.410.101	01.410.101	01.410.101	01.410.101	01.410.101	01.410.101	01.410.101	Hinge pin
7.5	65.074.216	65.074.216	65.074.216	65.074.216	65.074.216	65.074.216	65.074.216	65.074.216	65.074.216	65.074.216	65.074.216	65.074.216	65.074.216	65.074.216	65.074.216	Cotter pin
8	65.058.032	65.058.032	65.058.032	65.058.032	65.058.032	65.058.032	65.058.032	65.058.032	65.058.032	65.058.032	65.058.032	65.058.032	65.058.032	65.058.032	65.058.032	Spring washer
9	65.050.136	65.050.136	65.050.136	65.050.136	65.050.136	65.050.136	65.050.136	65.050.136	65.050.136	65.050.136	65.050.136	65.050.136	65.050.136	65.050.136	65.050.136	Nut
10	65.058.028	65.058.028	65.058.028	65.058.028	65.058.028	65.058.028	65.058.028	65.058.028	65.058.028	65.058.028	65.058.028	65.058.028	65.058.028	65.058.028	65.058.028	Spring washer
11	65.003.403	65.003.403	65.003.403	65.003.403	65.003.403	65.003.403	65.003.403	65.003.403	65.003.403	65.003.403	65.003.403	65.003.403	65.003.403	65.003.403	65.003.403	Bolt
12	02.330.016	02.250.017	02.250.017	02.350.016	02.350.016	02.330.016	02.250.017	02.250.017	02.350.016	02.350.016	02.330.016	02.250.017	02.250.017	02.350.016	02.350.016	Toe protector
13	90.899.024	90.899.024	90.899.024	90.899.024	90.899.024	90.899.024	90.899.024	90.899.024	90.899.024	90.899.024	90.899.024	90.899.024	90.899.024	90.899.024	90.899.024	Marking
14	65.025.007	65.025.007	65.025.007	65.025.007	65.025.007	65.025.007	65.025.007	65.025.007	65.025.007	65.025.007	65.025.007	65.025.007	65.025.007	65.025.007	65.025.007	Bolt
15	65.055.712	65.055.712	65.055.712	65.055.712	65.055.712	65.055.712	65.055.712	65.055.712	65.055.712	65.055.712	65.055.712	65.055.712	65.055.712	65.055.712	65.055.712	Washer
16	65.051.034	65.051.034	65.051.034	65.051.034	65.051.034	65.051.034	65.051.034	65.051.034	65.051.034	65.051.034	65.051.034	65.051.034	65.051.034	65.051.034	65.051.034	Nut
17	02.335.011	02.335.011	02.335.011	02.335.011	02.335.011	02.335.011	02.335.011	02.335.011	02.335.011	02.335.011	02.335.011	02.335.011	02.335.011	02.335.011	02.335.011	Hing pin
18	65.062.036	65.062.036	65.062.036	65.062.036	65.062.036	65.062.036	65.062.036	65.062.036	65.062.036	65.062.036	65.062.036	65.062.036	65.062.036	65.062.036	65.062.036	Lock washer
20	02.335.017	02.335.017	02.335.017	02.335.017	02.335.017	02.335.017	02.335.017	02.335.017	02.335.017	02.335.017	02.335.017	02.335.017	02.335.017	02.335.017	02.335.017	Spacer
23	02.230.025	02.335.023	02.335.023	02.340.023	02.340.023	02.230.025	02.335.023	02.335.023	02.340.023	02.340.023	02.230.025	02.335.023	02.335.023	02.340.023	02.340.023	Maintenance strut

FIG. A – PARTS OF SUBFRAME, LIP AND DECK

IN DEX	REFERENCE					DESCRIPTION
	HS 2022	HS 2522	HS 3022	HS 3522	HS 4022	
1	02.380.100	02.385.100	02.390.100	02.395.100	02.397.100	Deck
2	02.380.225	02.385.225	02.390.225	02.395.200	02.397.200	Subframe (Standard)
2	02.380.515	02.385.515	02.390.515	02.395.510	02.395.510	Subframe (Quick)
3	02.380.300	02.380.300	02.380.300	02.380.300	02.380.300	Lip
4	01.510.426	01.510.426	01.510.426	01.510.426	01.510.426	Hose main cylinder
5	02.335.601	02.335.601	02.335.601	02.335.601	02.335.601	Hose lip cylinder
6	02.380.014	02.380.014	02.380.014	02.335.014	02.335.014	Lip shaft
7	01.410.110	01.410.110	01.410.110	01.410.110	01.410.110	CTL support assembly
7.1	01.410.130	01.410.130	01.410.130	01.410.130	01.410.130	Support
7.2	01.410.150	01.410.150	01.410.150	01.410.150	01.410.150	Support
7.3	00.030.195	00.030.195	00.030.195	00.030.195	00.030.195	Spring
7.4	01.410.101	01.410.101	01.410.101	01.410.101	01.410.101	Hinge pin
7.5	65.074.216	65.074.216	65.074.216	65.074.216	65.074.216	Cotter pin
8	65.058.032	65.058.032	65.058.032	65.058.032	65.058.032	Spring washer
9	65.050.136	65.050.136	65.050.136	65.050.136	65.050.136	Nut
10	65.058.028	65.058.028	65.058.028	65.058.028	65.058.028	Spring washer
11	65.003.403	65.003.403	65.003.403	65.003.403	65.003.403	Bolt
12	02.330.016	02.250.017	02.250.017	02.350.016	02.350.016	Toe protector
13	90.899.024	90.899.024	90.899.024	90.899.024	90.899.024	Marking
14	65.025.007	65.025.007	65.025.007	65.025.007	65.025.007	Bolt
15	65.055.712	65.055.712	65.055.712	65.055.712	65.055.712	Washer
16	65.051.034	65.051.034	65.051.034	65.051.034	65.051.034	Nut
17	02.335.011	02.335.011	02.335.011	02.335.011	02.335.011	Hinge pin
18	65.062.036	65.062.036	65.062.036	65.062.036	65.062.036	Lock washer
20	02.335.017	02.335.017	02.335.017	02.335.017	02.335.017	Spacer
23	02.230.025	02.335.023	02.335.023	02.340.023	02.340.023	Maintenance strut

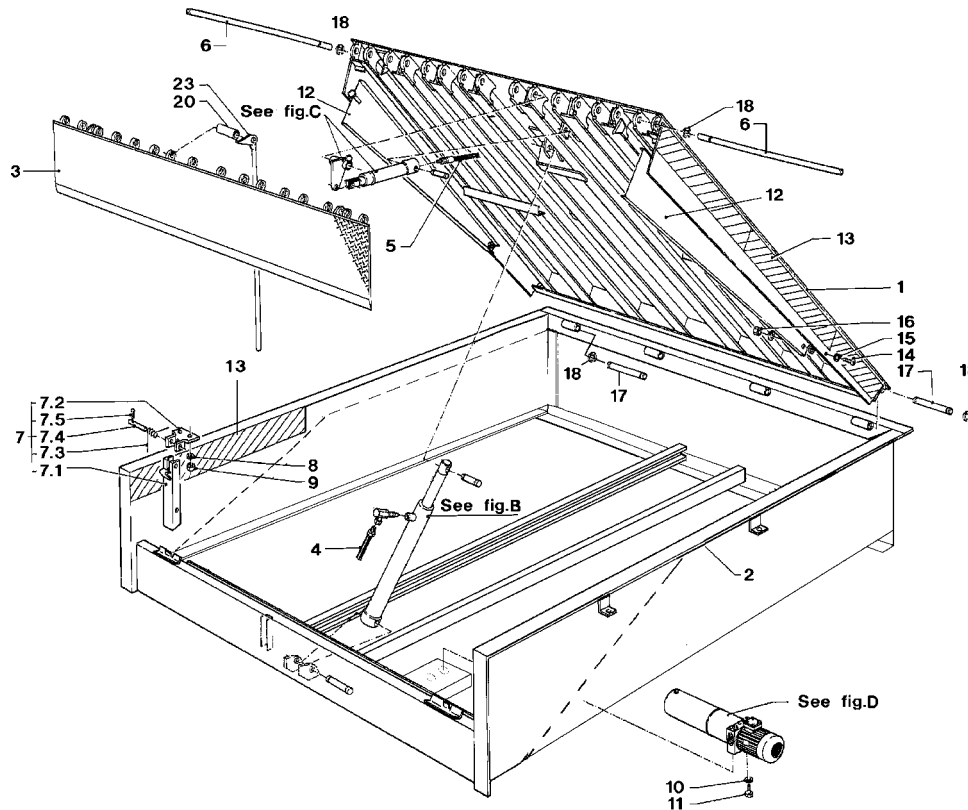


FIG. B - MAIN CYLINDER

INDEX	REFERENCE			DESCRIPTION
	HS 20..	HS 25../HS 30..	HS 35../HS 40..	
1	02.330.625	02.210.100	02.350.625	Cylinder
2	02.210.019	02.210.019	02.210.019	Pin
3	02.335.011	02.335.011	02.335.011	Pin
4	68.790.009	68.790.009	68.790.009	Adaptor
5	68.228.015	68.228.015	68.228.015	Valve
6	01.510.426	01.510.426	01.510.426	Hose main cylinder
7	65.062.036	65.062.036	65.062.036	Lock washer
	02.335.651	02.335.651	02.335.651	Seal replacement kit

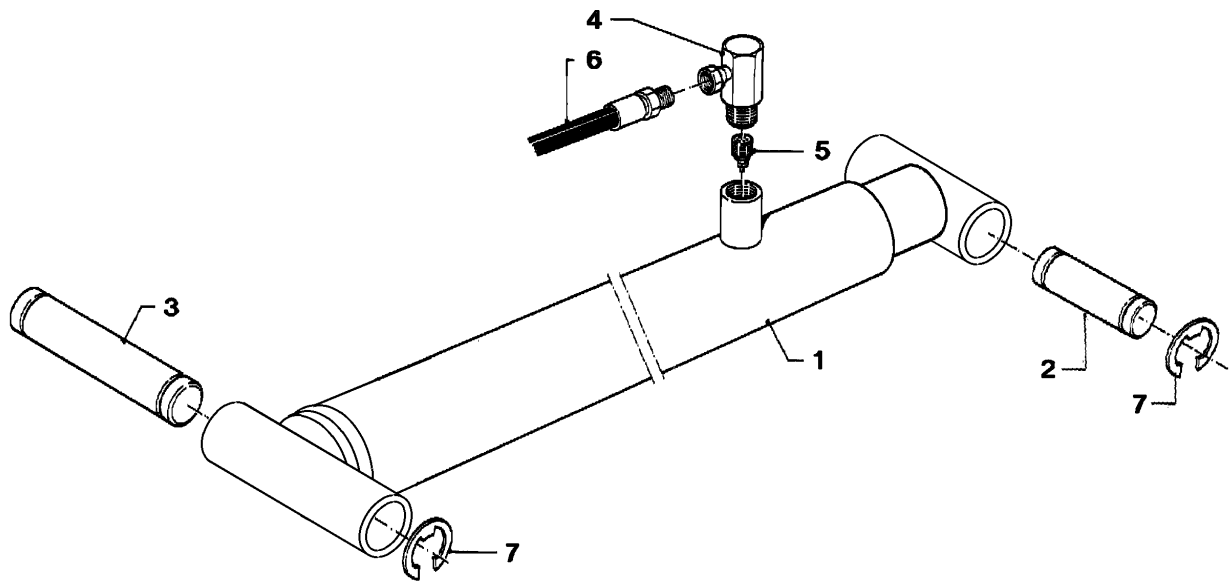
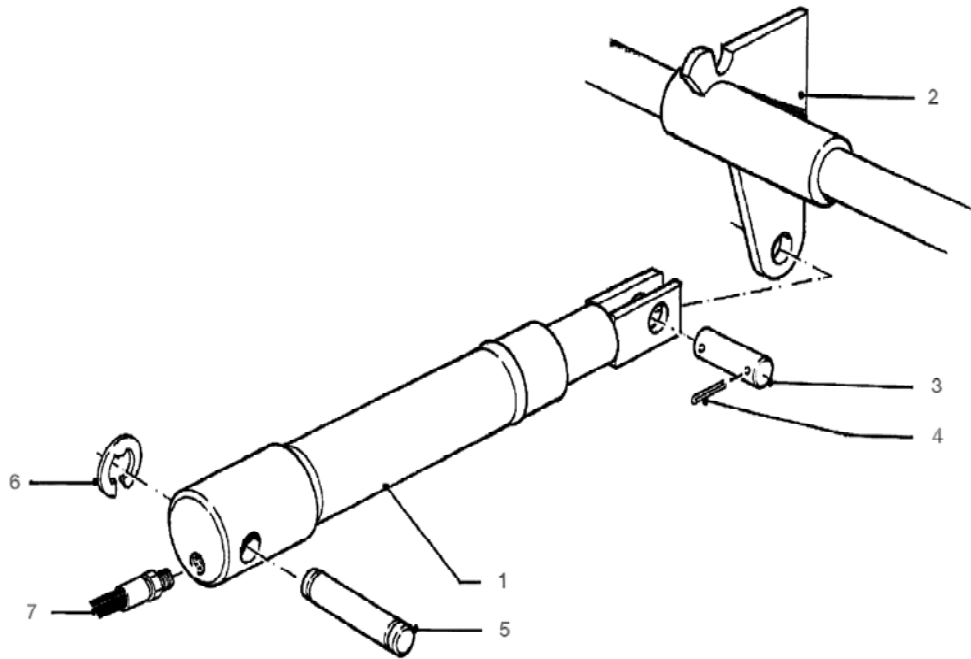


FIG. C - LIP CYLINDER (LIP 350 mm)

INDEX	REFERENCE	DESCRIPTION
1	02.335.680	Cylinder
2	02.335.050	Lip lifter
3	01.510.020	Pin
4	65.077.101	Roll pin
5	02.335.019	Pin
6	65.062.028	Lock washer
7	02.335.601	Hose lip cylinder
	02.335.681	Seal replacement kit



OPTION - SPECIAL LIPS

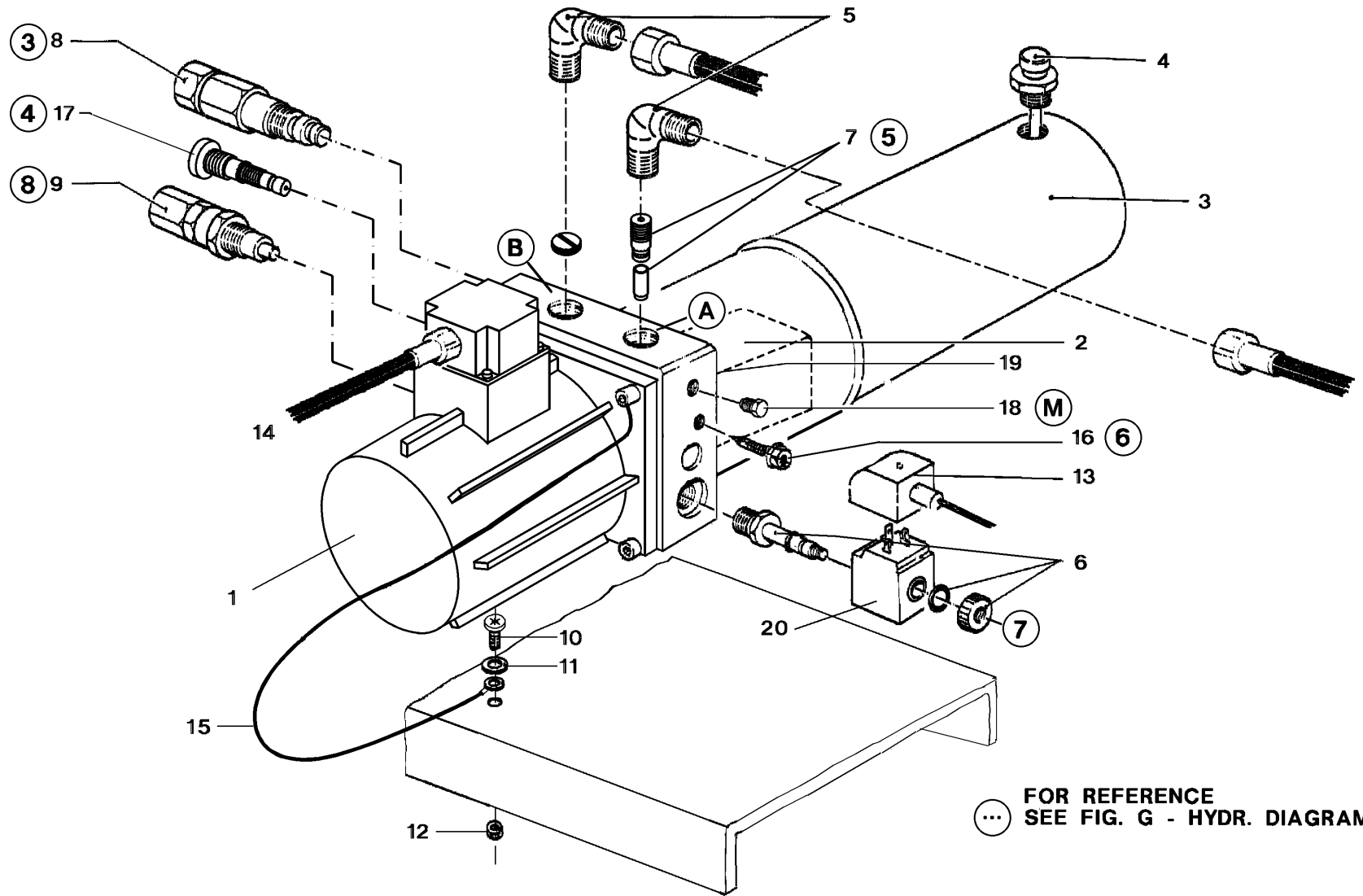
	LIP ASSEMBLY (FIG.A)	LIP CYLINDER (FIG.C)	EXTRA ADAPTOR
HS ..20			
Lip 400 mm	02.335.590	02.335.680	
Lip 450 mm	02.335.585	01.510.850	68.790.013
Lip 500 mm	02.335.595	01.510.550	68.790.013
HS ..21			
Lip 400 mm	01.423.000	02.335.680	
Lip 450 mm	01.429.010	01.510.850	68.790.013
Lip 500 mm	01.449.020	01.510.550	68.790.013
HS ..22			
Lip 400 mm	02.380.590	02.335.680	
Lip 450 mm	02.380.585	01.510.850	68.790.013
Lip 500 mm	02.380.595	01.510.550	68.790.013

Port B (see Fig. D and G) orifice diameter 1.3 to be drilled to 1.5 mm, only for Lip 500 mm

FIG. D - MOTORPUMPUNIT

INDEX	REFERENCE	DESCRIPTION
	02.335.630	Motorpumpunit assembly (excl. fittings)
1	02.335.611	Electro-motor
2	02.335.612	Pump + coupling
3	02.335.613	Tank
4	02.335.614	Cap with dip-stick
5	01.810.502	Adaptor
6	68.308.002	Stop valve incl. coil
7	02.335.636	Special valve
8	02.335.637	Sequence valve
9	02.335.618	Overflow valve
10	65.034.222	Bolt
11	1038.27.00.43	Washer
12	65.050.124	Nut
13	02.210.021	Electric cable assembly
14	01.810.763	Cable
15	02.335.602	Earth cable
16	02.335.639	Throttle
17	02.335.640	Special valve
18	02.335.621	Plug
19	02.335.622	O-ring tank
20	69.481.501	Coil

FIG. D



FOR REFERENCE
SEE FIG. G - HYDR. DIAGRAM

FIG. E - AUTOMATIC RETURN (OPTION)

INDEX	REFERENCE	DESCRIPTION
1	02.335.912	Limit switch
2	65.034.228	Screw
3	65.055.013	Washer
4	65.051.024	Nut
5	02.335.921	Cable
6	00.920.422	Clip
7	69.302.006	Connection box
8	65.034.228	Bolt 2 x M4 x 30 DIN 7985
9	65.055.013	Washer 2 x M4 DIN 125-A
10	65.051.024	Nut 2 x M4 DIN 985
*	02.335.916	Connection box assembly incl. cables and limit switches
*	02.335.931	Connection box assembly incl. cables and limit switches for option Automatic return + BDC

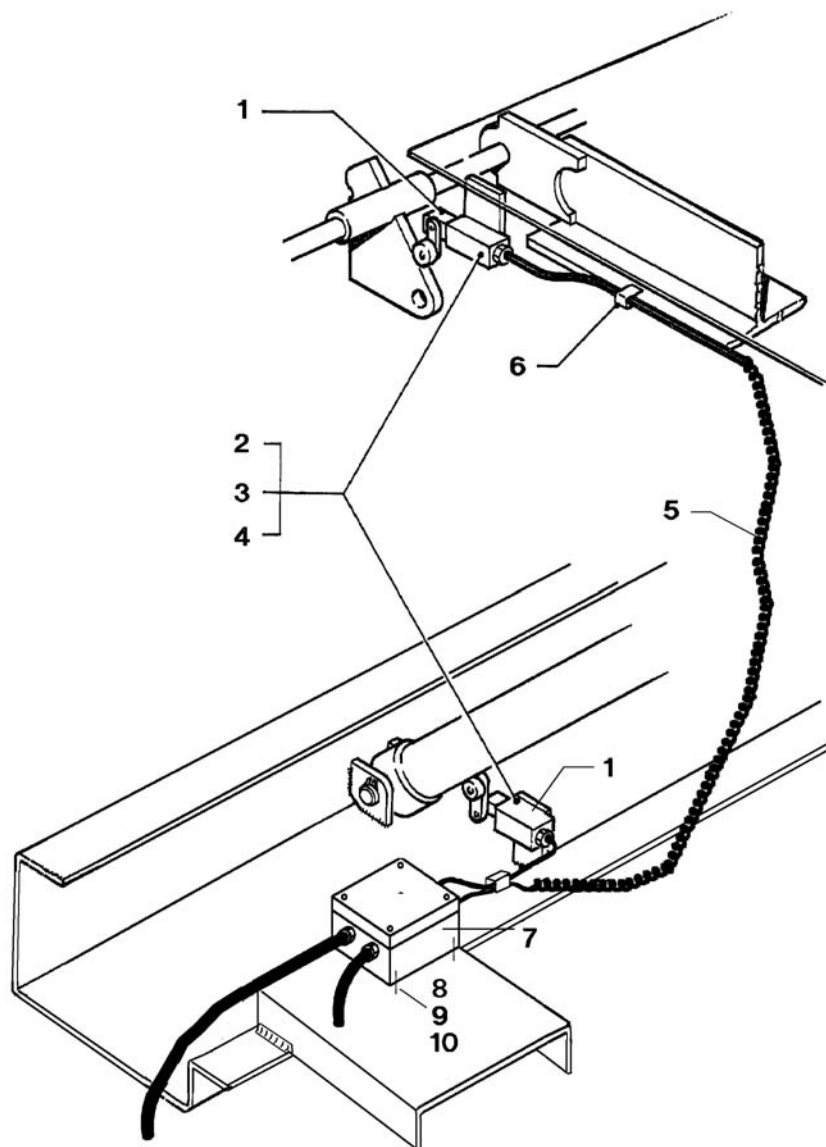


FIG. F - B.D.C. (OPTION)

INDEX	REFERENCE		DESCRIPTION
	HS 2017, 2020, 2021, 2022	HS 2517, 2520, 2521, 2522 HS 3017, 3020, 3021, 3022 HS 3517, 3520, 3521, 3522 HS 4017, 4020, 4021, 4022	
1	02.335.901	02.335.901	B.D.C. cylinder
2	65.003.363	65.003.363	Bolt
3	65.055.208	65.055.208	Washer
4	65.055.132	65.055.132	Nut
5	65.025.035	65.025.035	Eye bolt
7	68.308.002	68.308.002	Stopvalve incl. coil
8	69.481.501	69.481.501	Coil
9	68.790.003	68.790.003	Elbow
10	02.330.903	02.335.903	Hose
11	68.790.006	68.790.006	T-fitting
12	02.330.902	02.335.902	Chain
13	00.030.084	00.030.084	Spring
14	02.335.911	02.335.911	Electric cable
15	69.090.001	69.090.001	Clip
16	00.920.442	00.920.442	Clip
17	69.090.015	69.090.015	Connector
*	02.335.906	02.335.906	Connection box assembly incl. cables and limit switches
*	02.335.931	02.335.931	Connection box assembly incl. cables and limit switches for Automatic return + BDC

