



Dock Leveller HQ Model

Spare Parts List

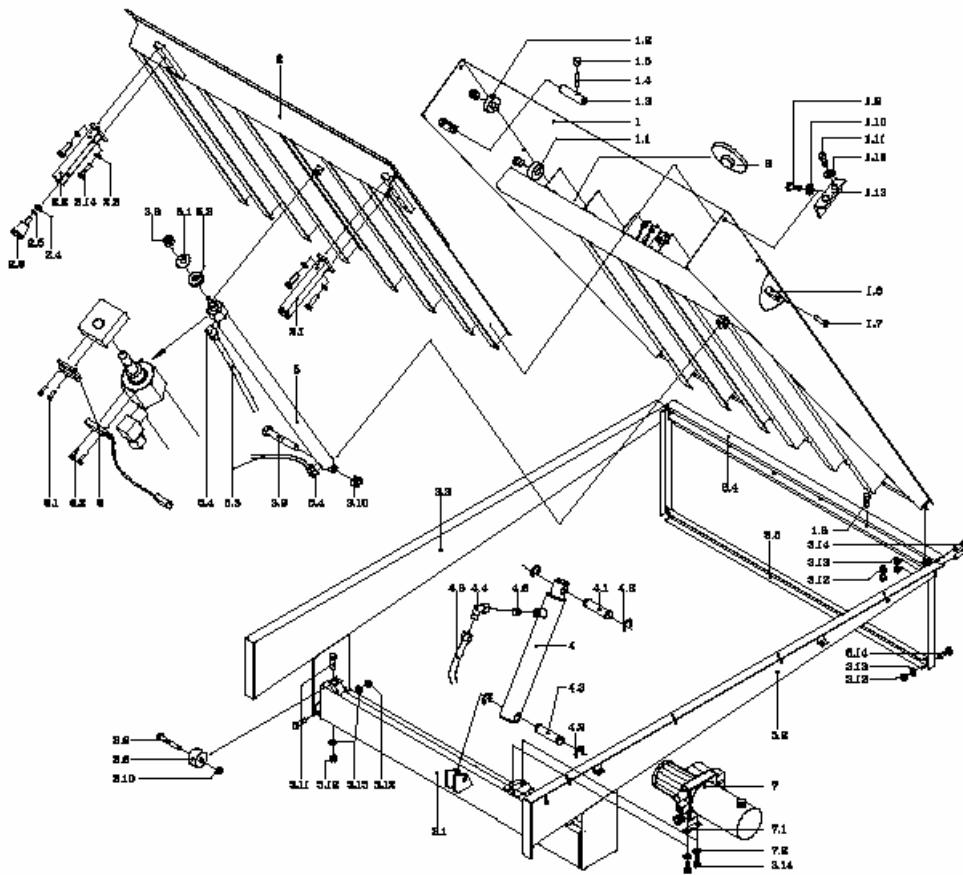


FIG. A PARTS OF SUBFRAME, LIP AND DECK

INDEX	REFERENCE	DESCRIPTION	INDEX	REFERENCE	DESCRIPTION
1	SEE TABLE 1	DECK	4	SEE TABLE 7	MAIN CYLINDER
1.1	02.400.005	GUIDE ROLLER	4.1	02.210.019	HINGE PIN
	02.404.947	GUIDE ROLLER (FOR OPTIONAL LP-LIP)	4.2	65.062.036	RETAINING RING
1.2	SEE TABLE 2	GUIDE ROLLER	4.3	01.510.021	HINGE PIN
1.3	02.400.003	MAINTENANCE PIN	4.4	68.700.813	ADAPTER
1.4	65.025.055	STUD BOLT	4.5	68.228.015	HOSE BURST VALVE
1.5	1005.11.00.03	BALL KNOB	4.6	02.406.001	HOSE MAIN CYLINDER
1.6	02.400.001	STOP	5	SEE TABLE 8	LIP CYLINDER INCL. ADAPTERS
1.7	65.025.056	BOLT	5.1	65.055.422	WASHER
1.8	65.012.443	BOLT	5.2	02.400.008	SHOCK ABSORBER
1.9	65.003.445	BOLT	5.3	02.406.002	HOSE LIP CYLINDER
1.10	65.055.426	WASHER	5.4	68.700.813	ADAPTER
1.11	65.003.403	BOLT	6	02.427.002	REED CONTACT (OPTION)
1.12	65.055.019	WASHER	6.1	65.080.038	DRIVE SCREW (OPTION)
1.13	02.600.015	BRACKET	6.2	65.034.167	SCREW (OPTION)
2	SEE TABLE 3	LIP	7	SEE FIG. B	HYDRAULIC PUMP UNIT
2.1	SEE TABLE 6	CTL A	7.1	02.406.003	RUBBER STRIP
2.2	SEE TABLE 6	CTL B	7.2	65.055.426	WASHER
2.3	65.058.032	SPRING WASHER	8	02.600.002	SLIDE PLATE
2.4	65.050.132	NUT		02.400.002	SLIDE PLATE (FOR OPTIONAL LP-LIP)
2.5	1038.06.00.84	WASHER			
2.6	66.201.046	BUFFER			
3.1	SEE TABLE 4	FRONT ANGLE			
3.2	SEE TABLE 5	SIDE PANEL			
3.3	SEE TABLE 5	SIDE PANEL			
3.4	SEE TABLE 4	REAR HINGE			
3.5	SEE TABLE 4	SUPPORT			
3.6	02.400.006	GUIDE ROLLER			
3.8	65.051.034	LOCKING NUT			
3.9	65.002.457	BOLT			
3.10	65.051.036	LOCKING NUT			
3.11	65.003.449	BOLT			
3.12	65.050.136	NUT			
3.13	65.055.021	WASHER			
3.14	65.003.447	BOLT			

FIG. A

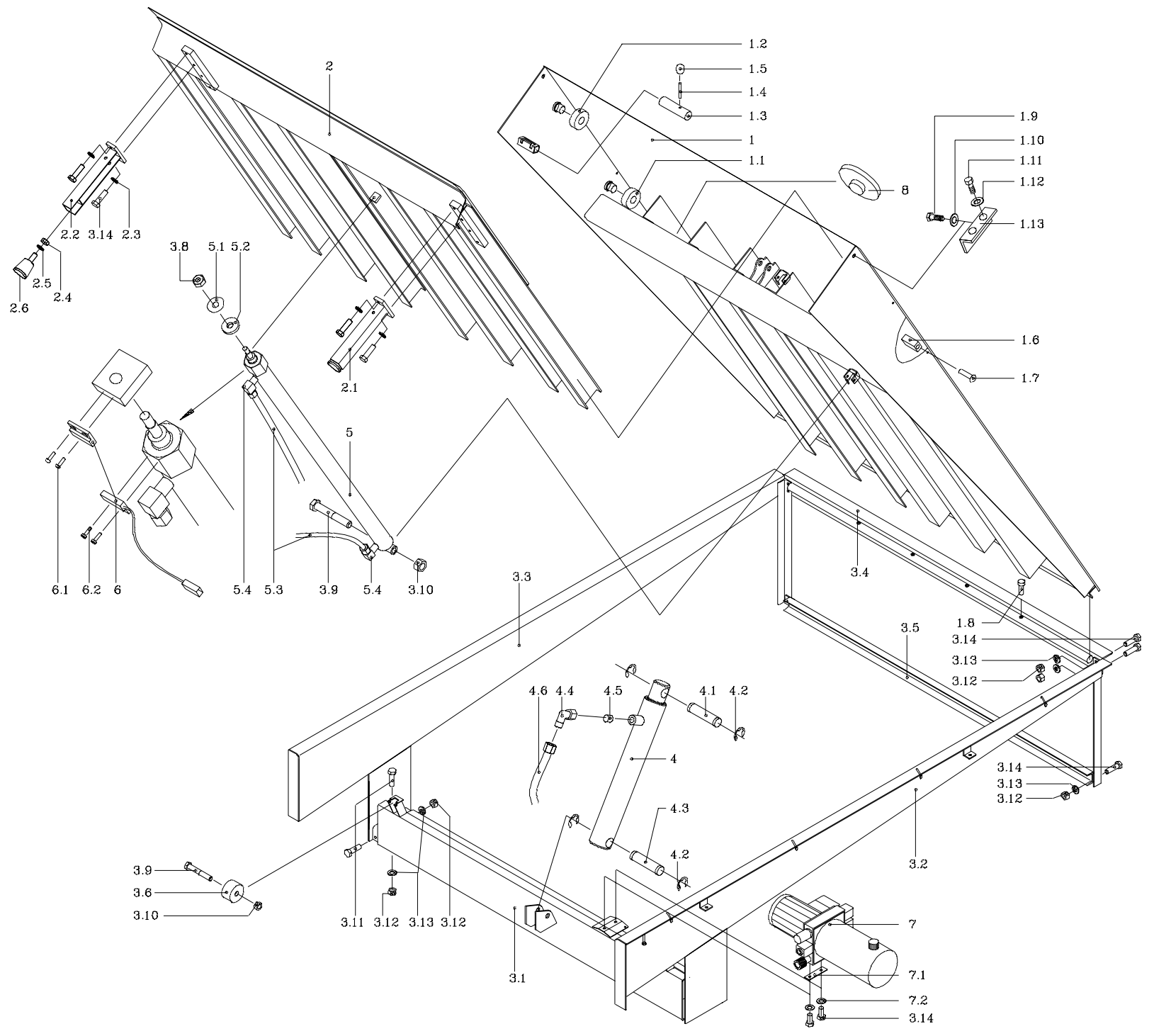


TABLE 1 DECK		BREEDTE - BREITE - WIDTH - LARGEUR				
		1750 mm	2000 mm	2110 mm	2250 mm	2400 mm
LENGTE LÄNGE LENGTH LONGEUR	2000 mm	02.601.000	02.601.100	02.601.500	02.601.200	02.601.300
	2000 mm (8)	02.601.050	02.601.150	02.601.550	02.601.250	02.601.350
	2200 mm	02.661.000	02.661.100	-	-	-
	2500 mm	02.611.000	02.611.100	02.611.500	02.611.200	02.611.300
	2800 mm	02.671.000	02.671.100	-	-	-
	3000 mm	02.621.000	02.621.100	02.621.500	02.621.200	02.621.300
	3500 mm	02.631.000	02.631.100	02.631.500	02.631.200	02.631.300
	4000 mm	02.641.000	02.641.100	02.641.500	02.641.200	02.641.300
4500 mm	02.651.000	02.651.100	02.651.500	02.651.200	02.651.300	

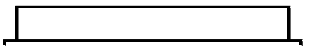
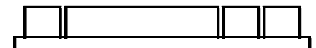
TABLE 2 GUIDE ROLLER		LIP - LIPPE - LIP - BECQUET	
INDEX 1.2			
Standard	02.400.004	02.400.005	
Optional LP-LIP	02.404.946	02.404.948	

TABLE 3 LIP *		BREEDTE - BREITE - WIDTH - LARGEUR				
		1750 mm	2000 mm	2110 mm	2250 mm	2400 mm
LENGTE LÄNGE LENGTH LONGEUR	Standard 600 mm	02.603.000	02.603.100	02.683.100	02.603.200	02.603.300
	Standard 800 mm	02.603.050	02.603.150	02.683.150	02.603.250	02.603.350
	Optional LP-LIP 600 mm	02.643.000	02.643.100	-	02.643.200	02.643.300
	Standard 1000 mm	02.613.000	02.613.100	02.693.100	02.613.200	02.613.300
	Optional LP-LIP 1000 mm	02.653.000	02.653.100	-	02.653.200	02.653.300

* VOOR LIP MET ZIJSECTIES ZIE FIG. C

FÜR LIPPE MIT EINSTOßZUNGEN SIEHE FIG. C

FOR LIP WITH RETRACTABLE SECTIONS SEE FIG. C

POUR BECQUET AVEC DES LANQUETTES VOIR FIG. C

TABLE 4			BREEDTE - BREITE - WIDTH - LARGEUR				
			1750 mm	2000 mm	2110 mm	2250 mm	2400 mm
INDEX 3.1			02.402.025	02.402.125	02.402.525	02.402.225	02.402.325
INDEX 3.4	Pit Width	STANDARD	02.402.050	02.402.150	02.402.550	02.402.250	02.402.350
		QMS	02.404.050	02.404.150	02.404.550	02.404.250	02.404.350
	1860	02.464.050	-	-	-	-	
	1880	02.464.150	-	-	-	-	
	2140	-	02.464.250	-	-	-	
2160	-	02.464.350	-	-	-		
INDEX 3.5			02.402.075	02.402.175	02.402.575	02.402.275	02.402.375

TABLE 6 CTL		INDEX 2.1	INDEX 2.2
LENGTE LÄNGE LENGTH LONGEUR	2000mm	02.603.400	02.603.450
	2500 mm		
	3000 mm	02.603.460	02.603.470
	3500 mm		
	4000 mm		
4500 mm	02.603.480	02.603.490	

TABLE 7 MAIN CYLINDER		INDEX 4
LENGTE LÄNGE LENGTH LONGEUR	2000mm	02.406.100
	2500 mm	
	3000 mm	02.426.100
	3500 mm	
	4000 mm	
4500 mm	02.446.100	

TABLE 8 LIP CYLINDER		INDEX 5
LENGTE LÄNGE LENGTH LONGEUR	600 mm	02.406.200
	1000 mm	02.416.200

TABLE 5 SIDE PANEL		INDEX 3.2				INDEX 3.3				
		STANDARD	STANDARD - XB	QMS	QMS - XB	STANDARD	STANDARD - XB	QMS	QMS - XB	
LENGTE LÄNGE LENGTH LONGEUR	2000 mm	02.402.000	02.404.010	02.404.000	02.404.020	02.402.100	02.404.110	02.404.100	02.404.120	
	2500 mm	02.412.000	02.414.010	02.414.000	02.414.020	02.412.100	02.414.110	02.414.100	02.414.120	
	3000 mm	02.422.000	02.424.010	02.424.000	02.424.020	02.422.100	02.424.110	02.424.100	02.424.120	
	3500 mm	02.432.000	02.434.010	02.434.000	02.434.020	02.432.100	02.434.110	02.434.100	02.434.120	
	4000 mm	02.442.000	02.444.010	02.444.000	02.444.020	02.442.100	02.444.110	02.444.100	02.444.120	
	4500 mm	02.452.000	02.454.010	02.454.000	02.454.020	02.452.100	02.454.110	02.454.100	02.454.120	
	MODEL US DIMENSIONS									
			INDEX 3.2				INDEX 3.3			
			PIT WIDTH	PIT WIDTH	PIT WIDTH	PIT WIDTH	PIT WIDTH	PIT WIDTH	PIT WIDTH	PIT WIDTH
			1860	1880	2140	2160	1860	1880	2140	2160
2200 mm		02.462.000	02.462.200	02.462.400	02.462.600	02.462.100	02.462.300	02.462.500	02.462.700	
2800 mm		02.472.200	02.472.200	02.472.400	02.472.600	02.472.100	02.472.300	02.472.500	02.472.700	

FIG. B HYDRAULIC PUMP UNIT

INDEX	REFERENCE	DESCRIPTION	INDEX	REFERENCE	DESCRIPTION
-	02.606.600	HYDR. PUMP UNIT ASSY. OR 230/400V - 50 HZ			
	02.606.960	HYDR. PUMP UNIT ASSY. OR 200V - 50 HZ (OPTION)			
	02.606.965	HYDR. PUMP UNIT ASSY. OR 200V - 60 HZ (OPTION)			
	02.606.970	HYDR. PUMP UNIT ASSY. OR 230V - 60 HZ (OPTION)			
1			15		
2	02.606.602	O-RING	16		
3			17		
4			18		
5			19		
6			20	68.113.020	HYDR. PUMP
7			21	68.821.301	SUCTION FILTER
8	68.308.013	2/2 CARTR. VALVE CEI-D-DT	22		
9	68.308.014	2/2 CARTR. VALVE NC BI-DIR.	23	02.606.623	TANK
10	69.481.503	SOLENOID	24	02.335.614	FILLER/BREATHER/DIPSTICK
11	32.006.257	MAIN RELEASE VALVE	25		
12	68.208.501	LIP RELEASE VALVE	26	02.606.626	COUPLING
13	68.238.501	ADJ. FLOW RESTR.	27	02.335.611	ELECTRIC MOTOR
14	02.335.636	LOGIC VALVE	28	69.171.019	PRESSURE SWITCH

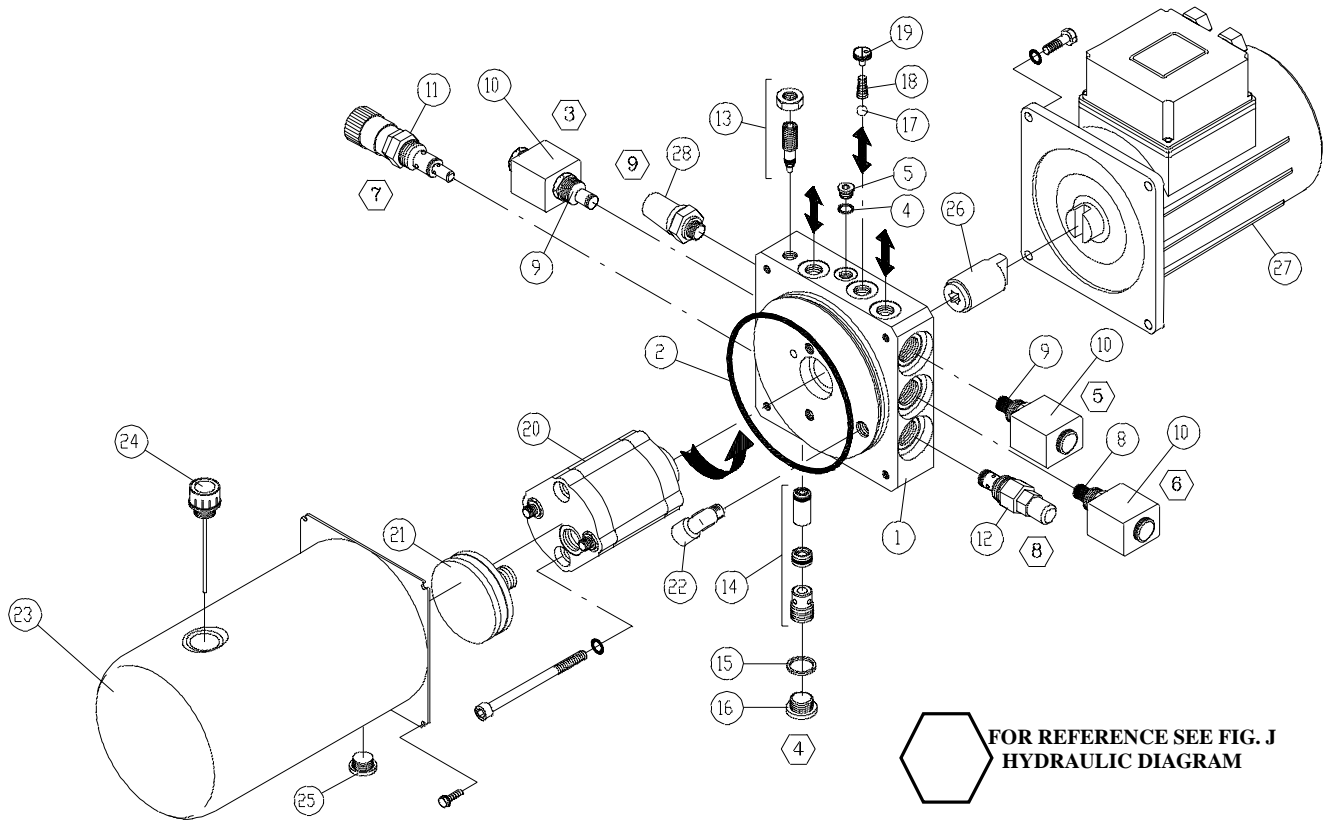


FIG. C PARTS OF LIP WITH RETRACTABLE SIDE SECTIONS

INDEX	REFERENCE	DESCRIPTION
1	SEE TABLE 1	LIP
2	SEE TABLE 2	SIDE SECTION
3	SEE TABLE 3	LIP
4	SEE TABLE 4	SIDE SECTION
5	SEE TABLE 5	SIDE SECTION
6	SEE TABLE 6	SIDE SECTION
7	65.225.004	BOLT
8	65.225.005	NUT

For guide roller see table 2 page 28.

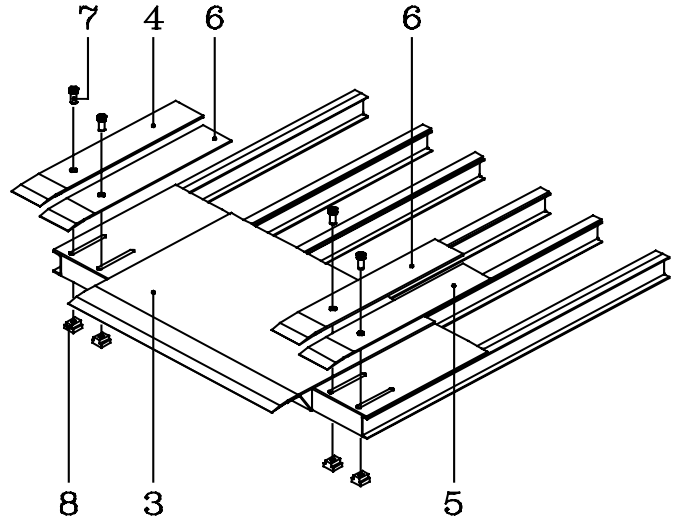
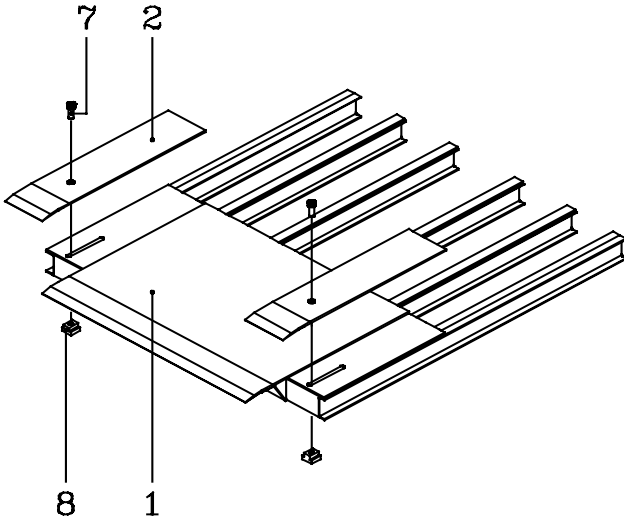


TABLE 1 LIP		INDEX 1
LENGTE LÄNGE LENGTH LONGUEUR	Standard 600 mm	02.623.000
	Optional LP-LIP 600 mm	02.663.000
	Standard 1000 mm	02.633.000
	Optional LP-LIP 1000 mm	02.673.000

TABLE 4 SIDE SECTION		INDEX 4
LENGTE LÄNGE LENGTH LONGUEUR	Standard 600 mm	02.623.250
	Optional LP-LIP 600 mm	02.663.250
	Standard 1000 mm	02.633.250
	Optional LP-LIP 1000 mm	02.673.250

TABLE 2 SIDE SECTION		INDEX 2
LENGTE LÄNGE LENGTH LONGUEUR	Standard 600 mm	02.623.200
	Optional LP-LIP 600 mm	02.663.200
	Standard 1000 mm	02.633.200
	Optional LP-LIP 1000 mm	02.673.200

TABLE 5 SIDE SECTION		INDEX 5
LENGTE LÄNGE LENGTH LONGUEUR	Standard 600 mm	02.623.300
	Optional LP-LIP 600 mm	02.663.300
	Standard 1000 mm	02.633.300
	Optional LP-LIP 1000 mm	02.673.300

TABLE 3 LIP		INDEX 1
LENGTE LÄNGE LENGTH LONGUEUR	Standard 600 mm	02.623.100
	Optional LP-LIP 600 mm	02.663.100
	Standard 1000 mm	02.633.100
	Optional LP-LIP 1000 mm	02.673.100

TABLE 6 SIDE SECTION		INDEX 6
LENGTE LÄNGE LENGTH LONGUEUR	Standard 600 mm	02.623.350
	Optional LP-LIP 600 mm	02.663.350
	Standard 1000 mm	02.633.350
	Optional LP-LIP 1000 mm	02.673.350

FIG. D SLAB (OPTION)

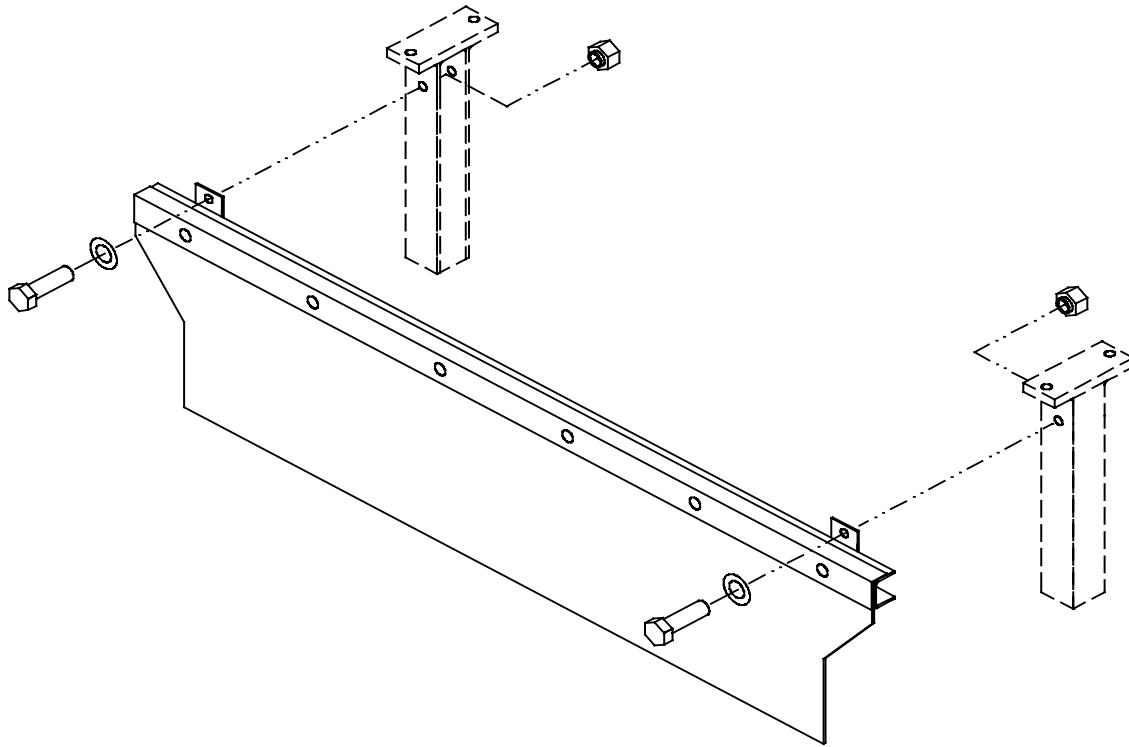
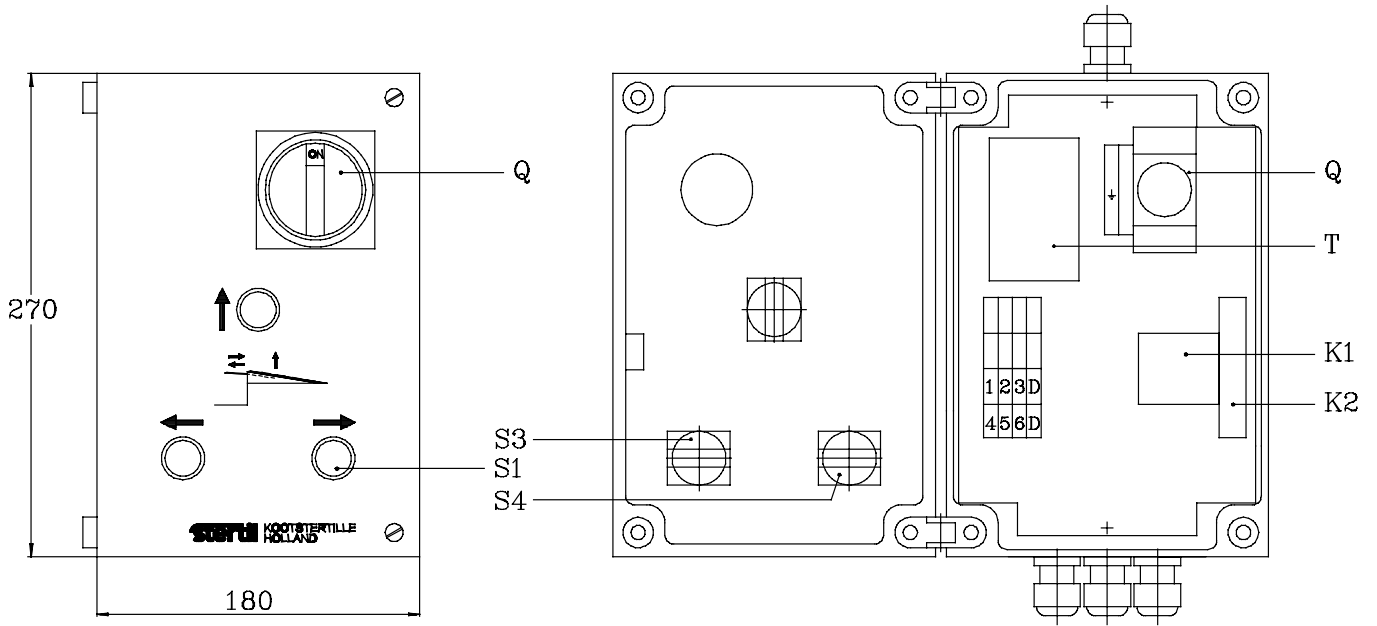


TABLE SLAB		BREEDTE - BREITE - WIDTH - LARGEUR				
		1750 mm	2000 mm	2110 mm	2250 mm	2400 mm
LENGTE LÄNGE LENGTH LONGUEUR	2000 mm	02.409.010	02.409.020	02.409.090	02.409.030	02.409.040
	2200 mm	02.409.010	02.409.020	-	02.409.030	-
	2500 mm	02.409.010	02.409.020	02.409.090	02.409.030	02.409.040
	2800 mm	02.409.010	02.409.020	-	-	-
	3000 mm	02.419.010	02.419.020	02.419.090	02.419.030	02.419.040
	3500 mm	02.419.010	02.419.020	02.419.090	02.419.030	02.419.040
	4000 mm	02.429.010	02.429.020	02.429.090	02.429.030	02.429.040
	4500 mm	02.429.010	02.429.020	02.429.090	02.429.030	02.429.040

FIG. E CONTROL BOX BASIC



Reference		Description			
B	02.407.100	Bedieningskast 400V	Bedienungskasten 400V	Control box 400V	Boîte de commande 400V
	02.407.200 Option	Bedieningskast 230V	Bedienungskasten 230V	Control box 230V	Boîte de commande 230V
	02.407.210 Option	Bedieningskast 200V	Bedienungskasten 200V	Control box 200V	Boîte de commande 200V
Q	69.120.004	Hoofdschakelaar	Hauptschalter	Main switch	Interrupteur principal
K1	01.615.652	Magneetschakelaar	Magnetschalter	Motor starter	Relais à moteur
K2	01.615.664	Hulprelais	Hilfsschalter	Control relay	Relais de commande
T	69.500.005	Transformator 400V	Transformator 400V	Transformer 400V	Transformateur 400V
	69.500.006 Option	Transformator 230V	Transformator 230V	Transformer 230V	Transformateur 230V
	69.500.011 Option	Transformator 200V	Transformator 200V	Transformer 200V	Transformateur 200V
F1	69.206.006	Zekering 250mAT (traag)	Sicherung 250mAT(trag)	Fuse 250mAT (slow)	Fusible 250mAT (lent)
	69.206.007 Option	Zekering 400mAT(traag)	Sicherung 400mAT (trag)	Fuse 400mAT(slow)	Fusible 400mAT (lent)
S1	69.141.013	Drukknopschakelaar	Druckknopfschalter	Pushbutton switch	Interrupteur à poussoir
S3	69.141.014	Schakelement NO	Schaltelement NO	Switch element NO	Elément d'interrupteur NO
S4	69.141.015	schakelement NO/NC	Schaltelement NO/NC	Switch element NO/NC	Elément d'interrupteur NO/NC
CM	01.810.763	Motorkabel	Motorkabel	Motor cable	Câble du moteur
CC	02-407-001	Stuurspanningskabel	Steuerspannungskabel	Control voltage cable	Câble du tension de commande
CD	02-407-002	Verdeelkabel	Kabelverteilung	Cable branching	Branchement de câble