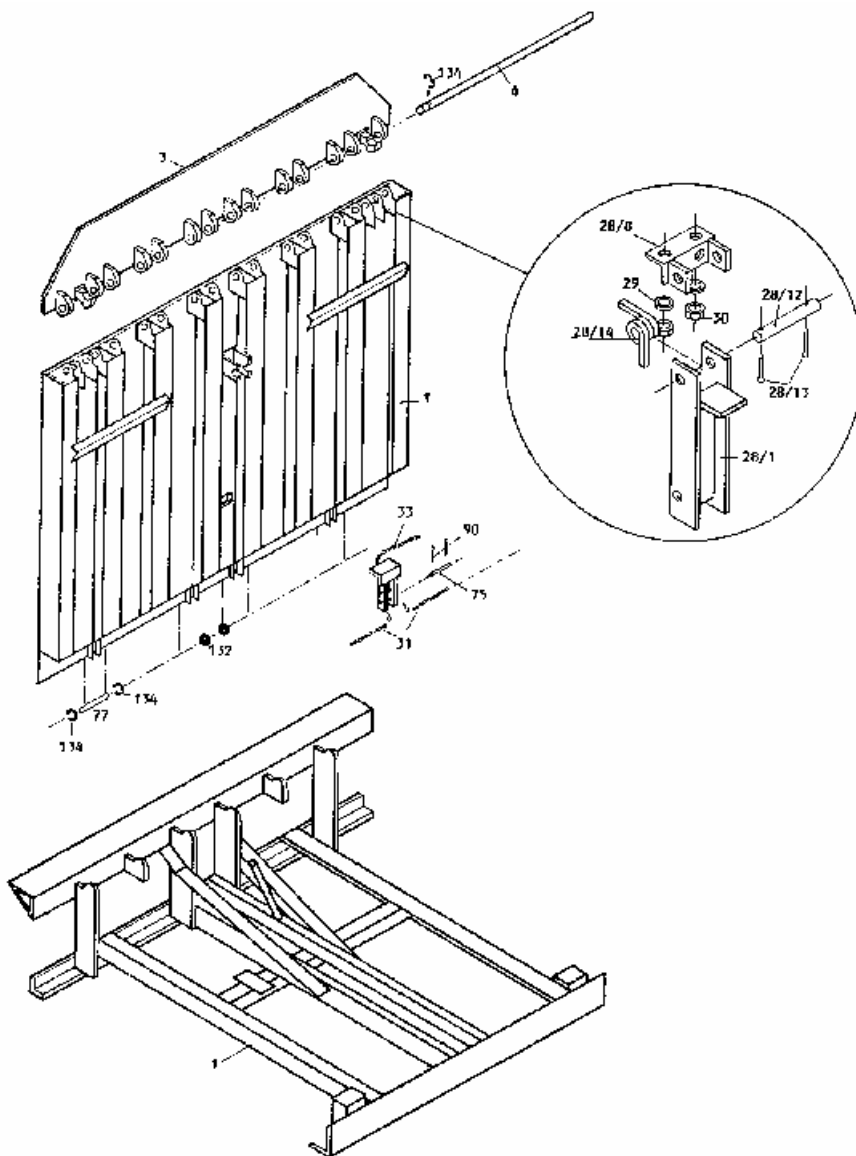


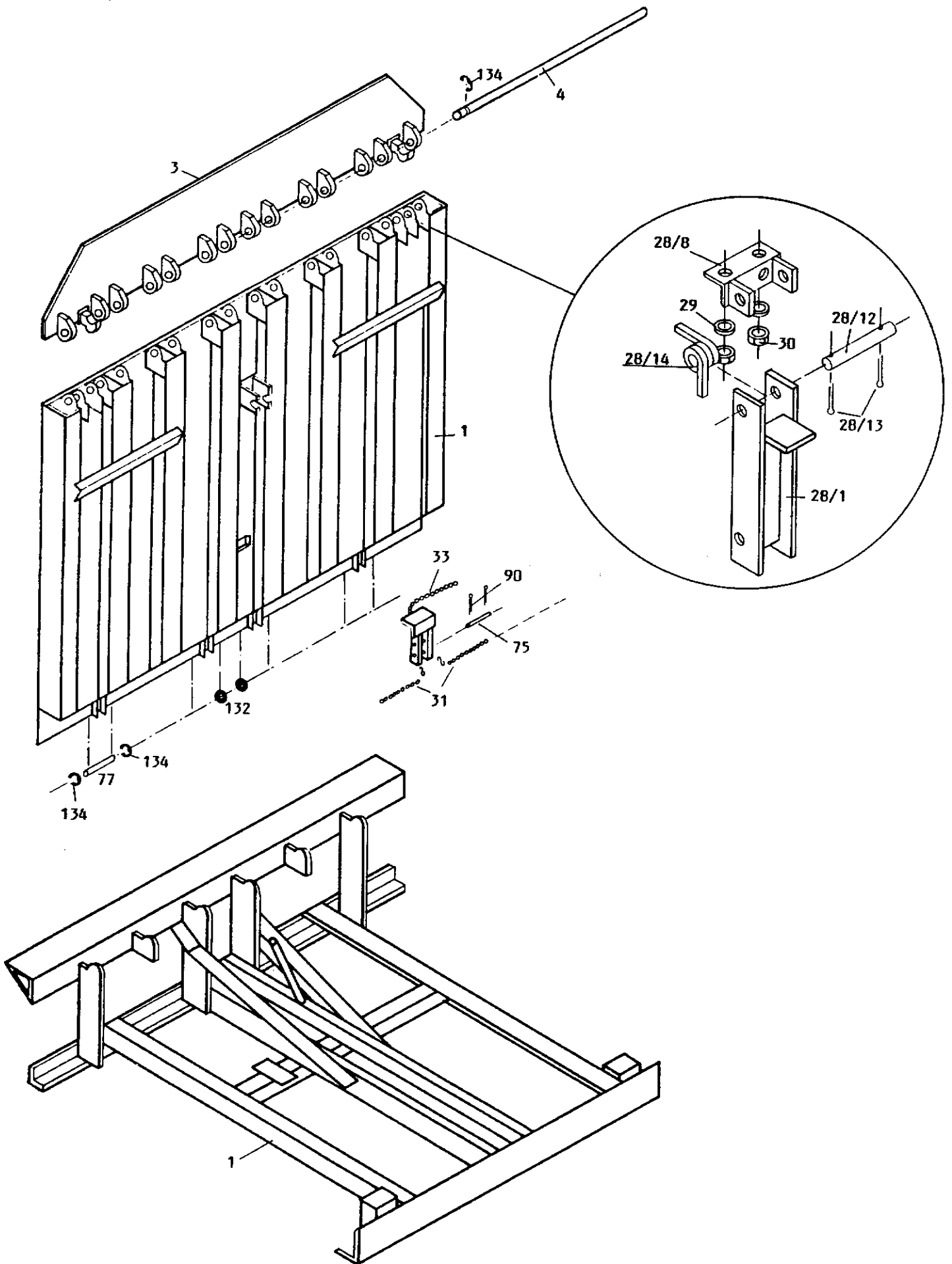


Dock Leveller HE Model

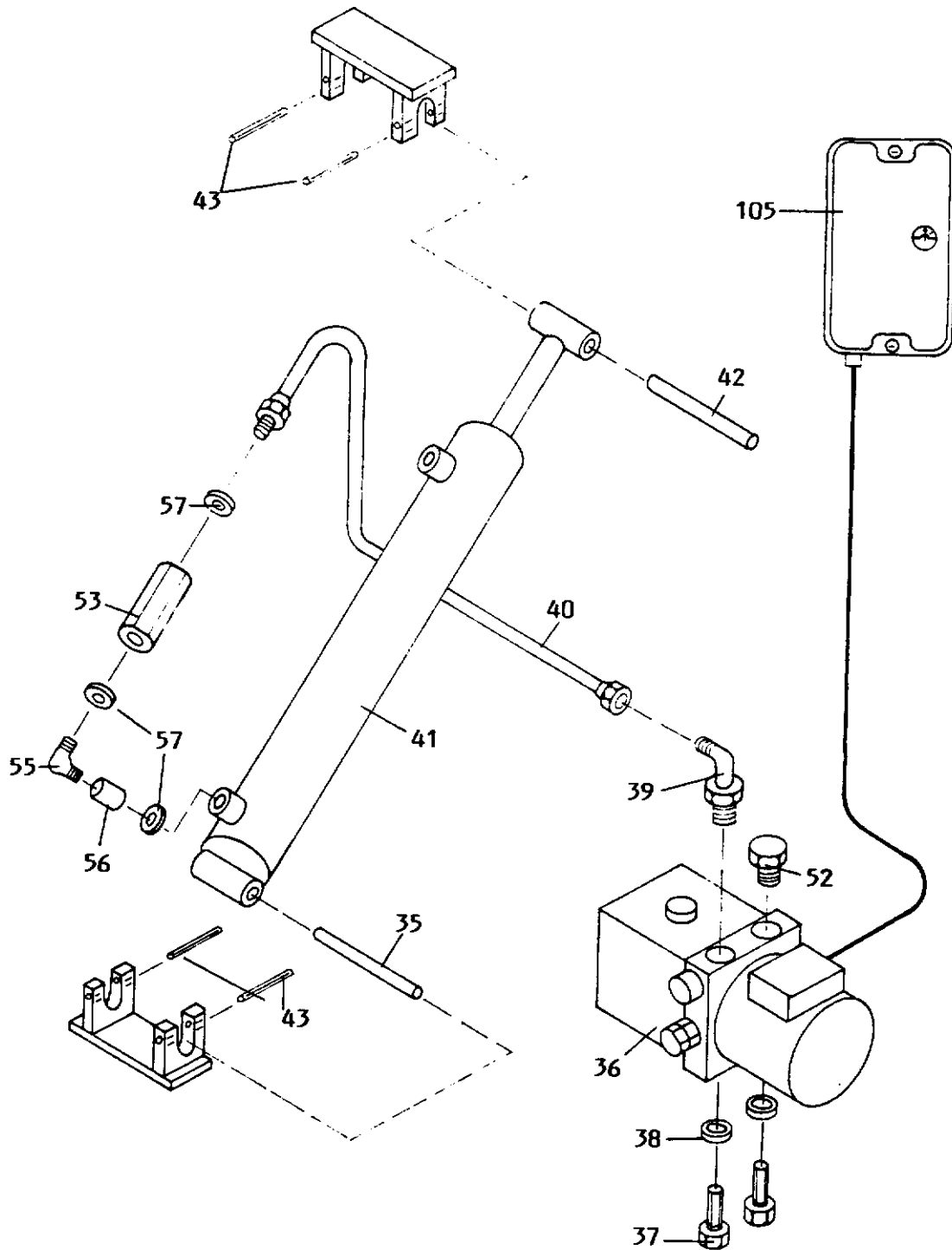
Spare Parts List



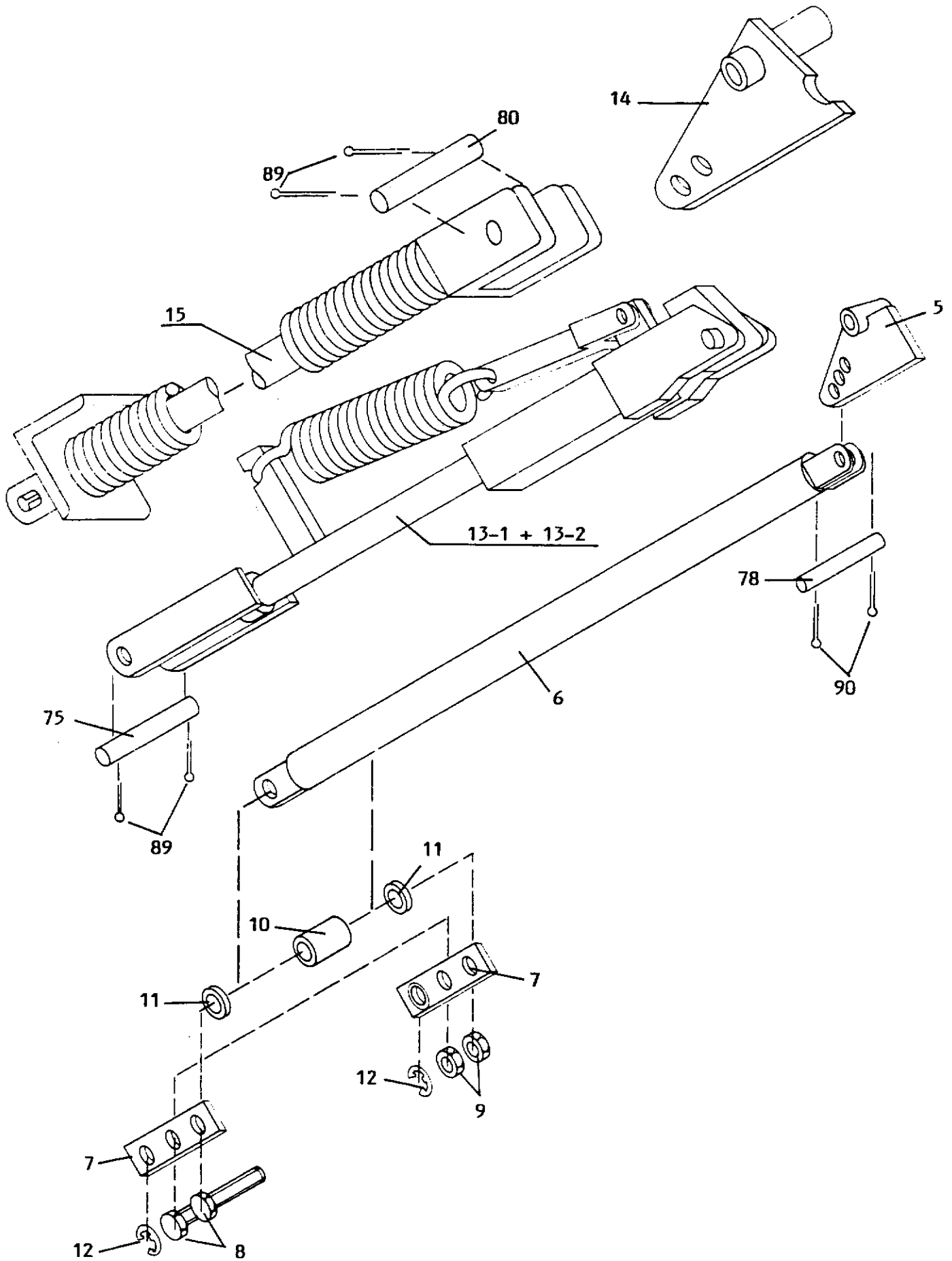
Ramp-, Lip-, Subframe- and CTL assemblies



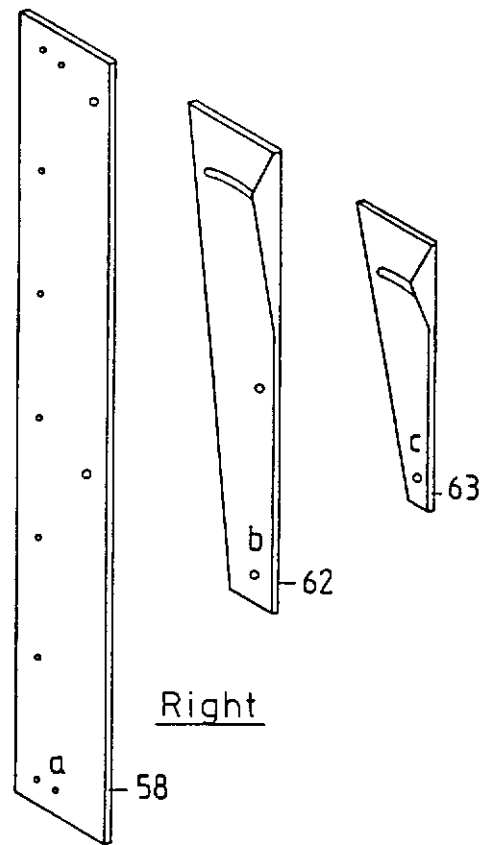
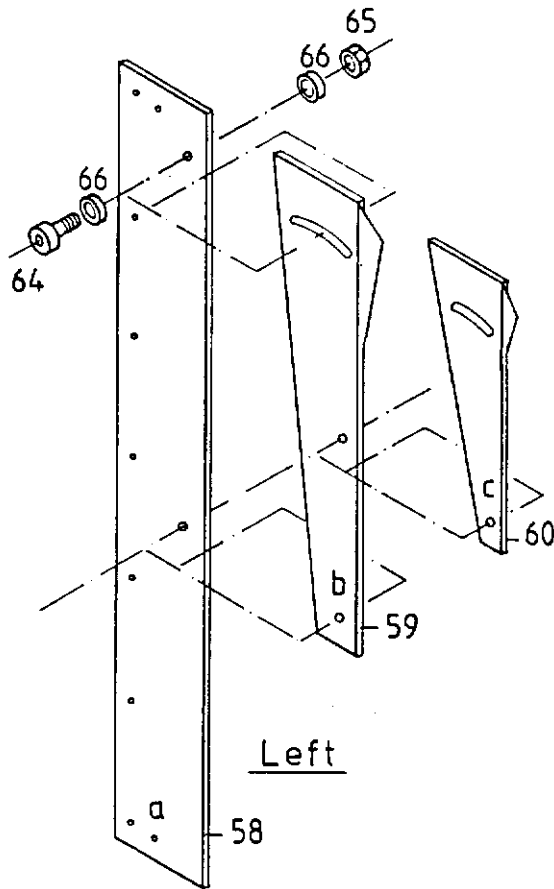
Pump, motor and main lifting cylinder assemblies



Lip extension mechanism



Service Kits Toeguards



All mounting materials are supplied by **STERTIL**.

LEFT		
	KIT I	KIT II
	a+b	b
6'	01-400-901	01-400-921
	a+b	b
8'	01-400-903	01-400-923
	a+b+c	b+c
10'	01-400-905	01-400-925
	a+b+c	b+c
3 ⁵ mtr.	01-400-907	01-400-927
	a+b+c	b+c
4 mtr.	01-400-909	01-400-929
	a+b+c	b+c
4 ⁵ mtr.	01-400-911	01-400-931

RIGHT		
	KIT I	KIT II
	a+b	b
6'	01-400-902	01-400-922
	a+b	b
8'	01-400-904	01-400-924
	a+b+c	b+c
10'	01-400-906	01-400-926
	a+b+c	b+c
3 ⁵ mtr.	01-400-908	01-400-928
	a+b+c	b+c
4 mtr.	01-400-910	01-400-930
	a+b+c	b+c
4 ⁵ mtr.	01-400-912	01-400-932

P A R T S L I S T

=====

		HE 608	HE 708	HE 600	HE 700
		=====	=====	=====	=====
1	RAMP ASSY	01.536.000	01.546.000	01.556.000	01.566.000
2	SUB-FRAME ASSY	01.537.000	01.547.000	01.557.000	01.567.000
3	LIP ASSY	01.413.000	01.423.000	01.413.000	01.423.000
4	LIP ROD	01.410.014	01.420.014	01.410.014	01.420.014
5	LIP LIFTER ASSY	01.410.250	01.410.250	01.410.250	01.410.250
6	CONNECTING ROD	01.430.300	01.430.300	01.450.300	01.450.300
7	LINK ASSY	01.410.275	01.410.275	01.410.275	01.410.275
8	BOLT	00.035.400	00.035.400	00.035.400	00.035.400
9	LOCK NUT 1/2"	00.000.035	00.000.035	00.000.035	00.000.035
10	ROLLER	01.410.013	01.410.013	01.410.013	01.410.013
11	LOCK WASHER M 12	65.055.212	65.055.212	65.055.212	65.055.212
12	CLIP RING 5/8"	00.049.060	00.049.060	00.049.060	00.049.060
13/ 1	PUSH BAR ASSY 16 " LIP	00.705.213	00.705.213	00.705.213	00.705.213
13/ 2	PUSH BAR ASSY 18 " LIP	00.053.155	00.053.155	00.053.155	00.053.155
14	LIP ASSIST ASSY	01.535.325	01.535.325	01.535.325	01.535.325
15	PUSH ROD ASSY	00.037.160	00.037.160	00.037.160	00.037.160
28	C.T.L. ASSY	01.510.100	01.510.100	01.510.100	01.510.100
28/ 1	C.T.L. SUB ASSY	01.510.125	01.510.125	01.510.125	01.510.125
28/ 8	C.T.L. KEEPER	01.410.150	01.410.150	01.410.150	01.410.150
28/ 12	HINGE PIN	01.410.101	01.410.101	01.410.101	01.410.101
28/ 13	COTTER PIN 4 X 30	65.074.216	65.074.216	65.074.216	65.074.216
28/ 14	SPRING C.T.L.	00.030.195	00.030.195	00.030.195	00.030.195
29	LOCK WASHER M 12	65.058.032	65.058.032	65.058.032	65.058.032
30	NUT M 12	65.050.136	65.050.136	65.050.136	65.050.136
31	B.D.C. CHAIN ASSY	01.530.350	01.530.350	01.550.350	01.550.350
32	PIVOT ASSY	00.093.064	00.093.064	00.093.064	00.093.064
33	RELEASE CHAIN ASSY	01.510.375	01.510.375	01.510.375	01.510.375
35	PIN CYLINDER BOTTOM	01.610.021	01.610.021	01.610.021	01.610.021
36	MOTOR PUMP UNIT 220/380 V. 3 PH.	01.510.500	01.510.500	01.510.500	01.510.500
37	BOLT M 10 X 25 DIN 933-8.8	65.003.405	65.003.405	65.003.405	65.003.405
38	WASHER M 10 DIN 127-A	65.058.028	65.058.028	65.058.028	65.058.028
39	ADAPTOR 9/16-18 SAE/JIC 90 DEG.	00.031.011	00.031.011	00.031.011	00.031.011
40	HYDR. HOSE ASSY	01.535.046	01.535.046	01.535.046	01.535.046
41	MAIN CYLINDER ASSY"	01.535.525	01.535.525	01.535.525	01.535.525
42	PIN CYLINDER TOP	01.510.021	01.510.021	01.510.021	01.510.021
43	ROLL PIN 8 X 60	65.077.194	65.077.194	65.077.194	65.077.194
51	HYDR. OIL H.F.A. 6,5 LTR	92.902.300	92.902.300	92.902.300	92.902.300
52	CLOSING PLUG	01.510.051	01.510.051	01.510.051	01.510.051
53	LINE RUPTURE VALVE	01.535.041	01.535.041	01.535.041	01.535.041
55	ADAPTOR	01.535.043	01.535.043	01.535.043	01.535.043
56	ADAPTOR	01.535.044	01.535.044	01.535.044	01.535.044
57	BONDED SEAL	01.535.045	01.535.045	01.535.045	01.535.045
58	TOE GUARD	01.430.015	01.430.015	01.450.015	01.450.015
59	SLIDING LAMEL LEFT	01.430.016	01.430.016	01.450.016	01.450.016
60	SLIDING LAMEL SMALL LEFT			01.450.017	01.450.017
61	MARK BAND	90.899.024	90.899.024	90.899.024	90.899.024
62	SLIDING LAMEL RIGHT	01.430.019	01.430.019	01.450.019	01.450.019
63	SLIDING LAMEL SMALL RIGHT			01.450.020	01.450.020
64	SCREW M 10 X 25	65.025.014	65.025.014	65.025.014	65.025.014
65	LOCK NUT M 10	65.051.034	65.051.034	65.051.034	65.051.034
66	WASHER 10,5 X 30 X 1,5	65.055.712	65.055.712	65.055.712	65.055.712
67	CARTRIDGE CALIBRE 6.8/11 RED	65.099.014	65.099.014	65.099.014	65.099.014
68	WASHER R 23	65.099.009	65.099.009	65.099.009	65.099.009
69	NAIL END 19	65.099.010	65.099.010	65.099.010	65.099.010
75	CLEVIS PIN 13 X 42	01.410.010	01.410.010	01.410.010	01.410.010
77	HINGE PIN	01.410.011	01.410.011	01.410.011	01.410.011
78	CLEVIS PIN 13 X 30	01.410.024	01.410.024	01.410.024	01.410.024

P A R T S L I S T

		HE 608 =====	HE 708 =====	HE 600 =====	HE 700 =====
80	CLEVIS PIN 10 X 40	00.035.257	00.035.257	00.035.257	00.035.257
89	COTTER PIN 3 X 30	65.074.146	65.074.146	65.074.146	65.074.146
90	COTTER PIN 4 X 30	65.074.216	65.074.216	65.074.216	65.074.216
105	CONTROL BOX	01.535.750	01.535.750	01.535.750	01.535.750
111	DECAL LIFT HERE	01.610.020	01.610.020	01.610.020	01.610.020
112	DECAL PLACE FORKS HERE	00.138.604	00.138.604	00.138.604	00.138.604
113	DECAL WARNING	00.138.720	00.138.720	00.138.720	00.138.720
114	DECAL DO NOT PLACE FORKS HERE	00.138.578	00.138.578	00.138.578	00.138.578
115	DECAL KELLEY	01.410.025	01.410.025	01.410.025	01.410.025
116	DECAL CAUTION	00.138.526	00.138.526	00.138.526	00.138.526
117	DECAL SERIAL NUMBER	01.410.030	01.410.030	01.410.030	01.410.030
118	DECAL STERIL	01.410.022	01.410.022	01.410.022	01.410.022
120	DECAL HYDR. PUMP UNIT	00.138.534	00.138.534	00.138.564	00.138.534
132	SLEEVE	65.070.015	65.070.015	65.070.015	65.070.015
134	LOCK WASHER	65.062.036	65.062.036	65.062.036	65.062.036
140	STRIP STEEL	90.006.228	90.006.228	90.006.228	90.006.228
141	STRIP STEEL CLAMP	00.920.520	00.920.520	00.920.520	00.920.520
142	LIFTING LUG	00.026.001	00.026.001	00.026.001	00.026.001
143	BOLT M 16 X 35	65.003.529	65.003.529	65.003.529	65.003.529
144	LOCK NUT M 16	65.051.040	65.051.040	65.051.040	65.051.040