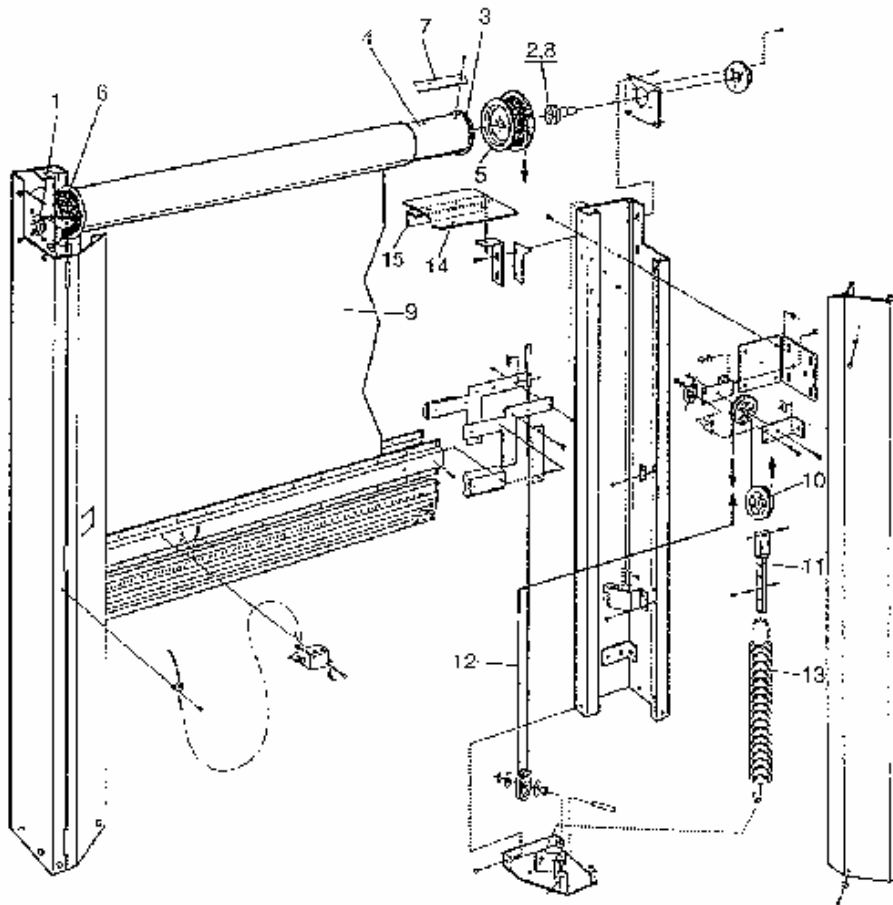




Rapid Roll 450

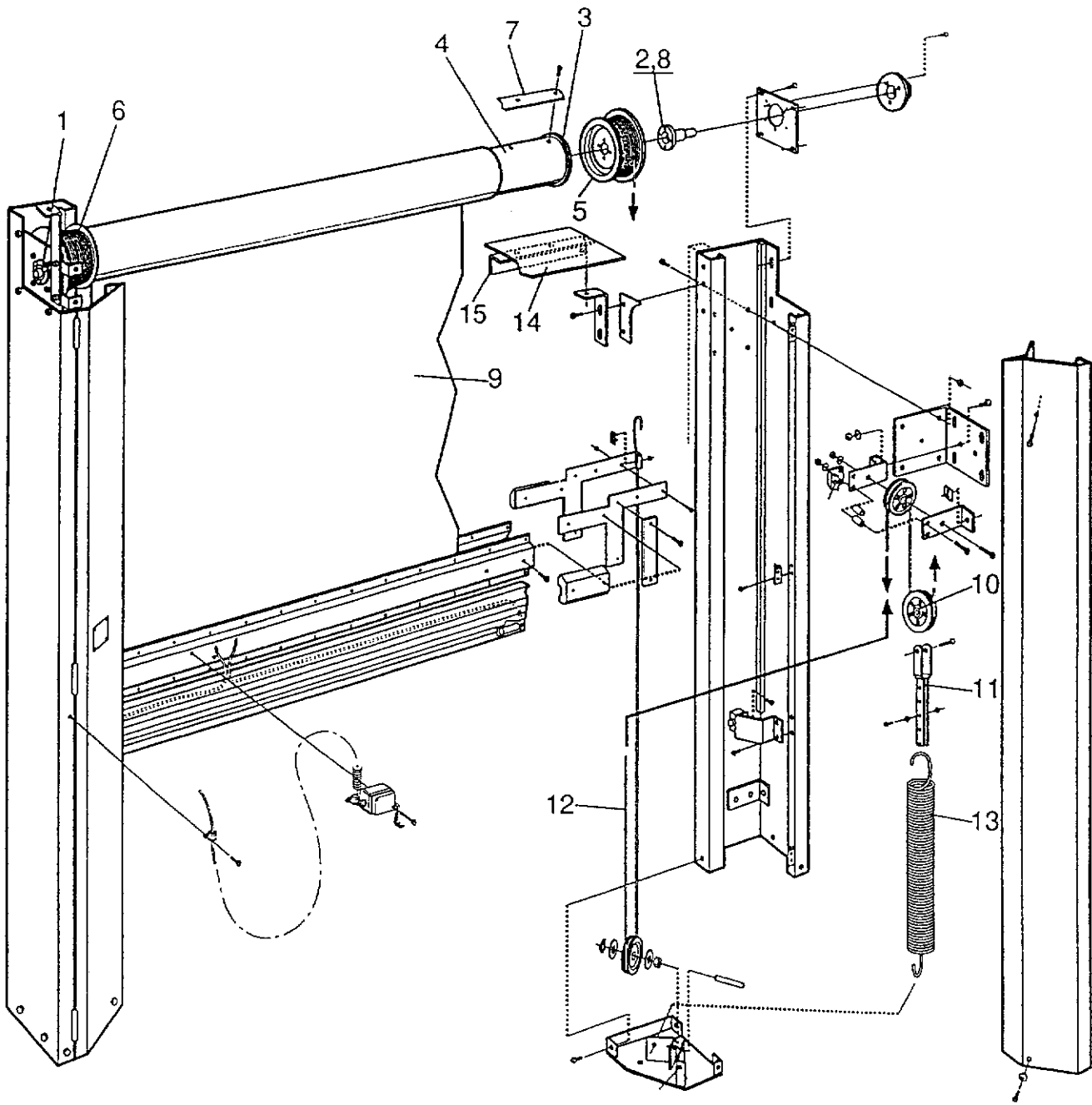
Spare Parts List



SPARE PARTS

Model 450

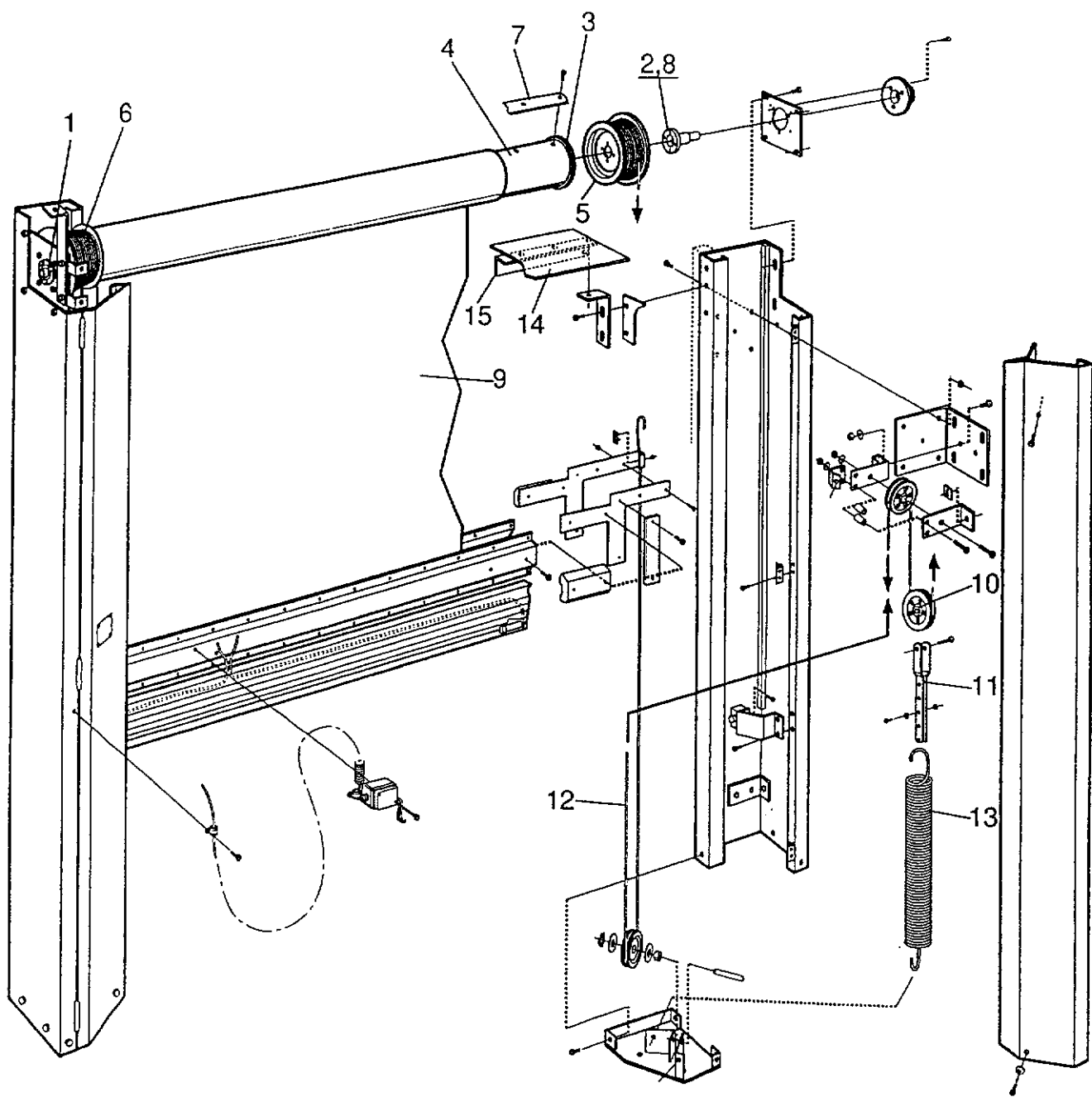
When ordering spare parts, always state
serial number and handing of drive unit



RAPID ROLL TYPE 450 - SERIES 400
VALS
DOOR ROLL

SIDA/PAGE 3
ILLUSTRATION 450/1
960102

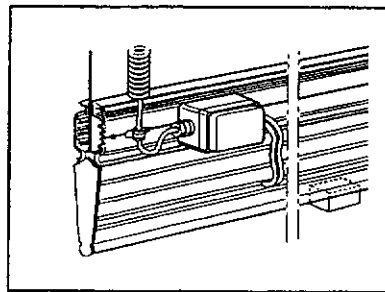
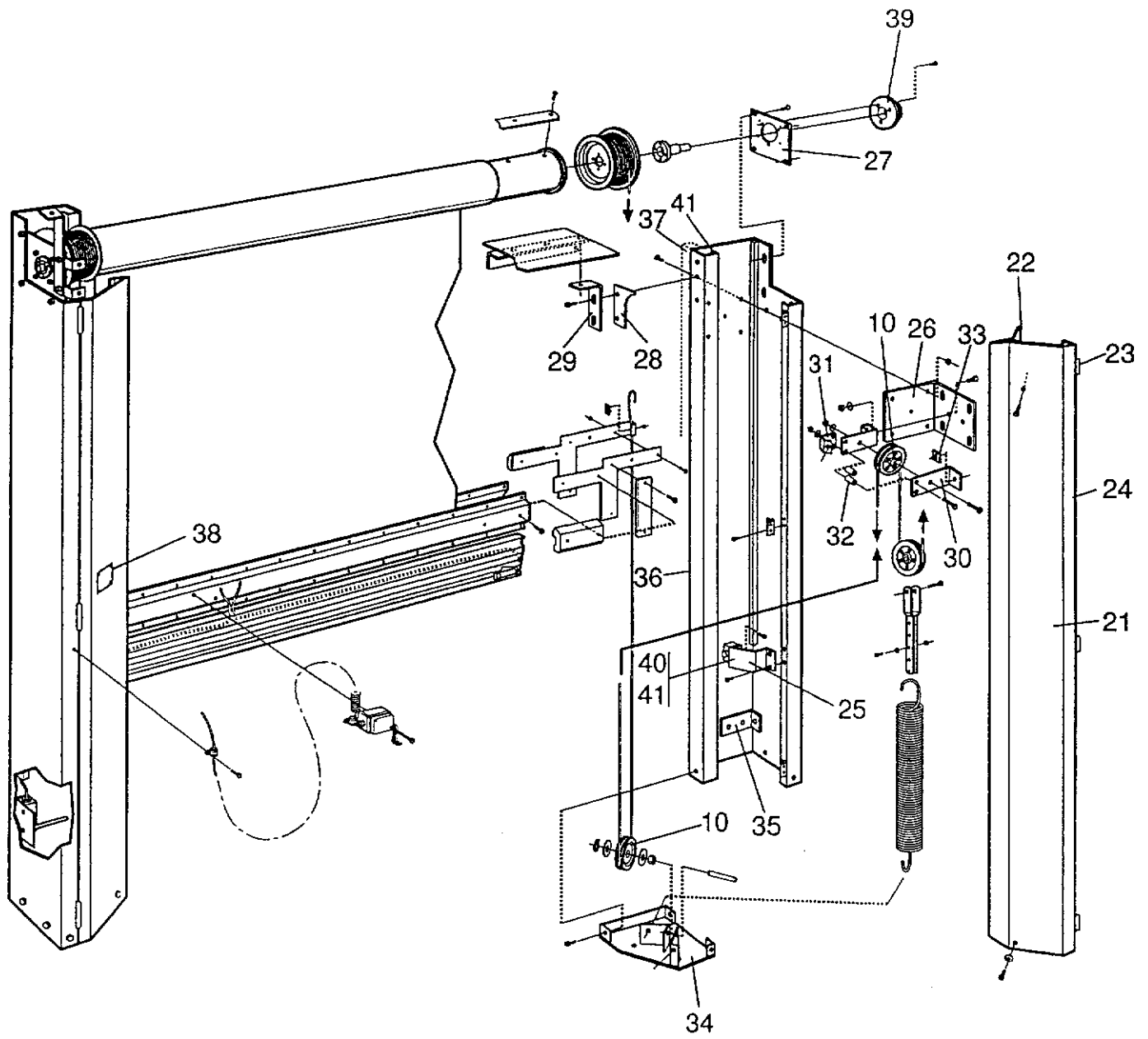
POS FIG	ANT QUA	DET. NR. PART NO.	BENÄMNING	DESCRIPTION
			<u>VERSION 1, EJ ROSTFRITT STÅL</u>	<u>VERSION 1, NO STAINLESS STEEL</u>
	1	96-3316-XX	Vals, komplett, Nomadrive	Drum roll complete, Nomadrive
1	1	66-3602-85	*Axel, kort	*Stub axle, short
2	1	66-3623-92	*Axel lång, drivsida	*Stub axle, motor side
3	2	66-3661-85	*Valsgavel	*Drum roll end boss
4	1	96-3398-00	*Valsrör	*Drum roll tube
5	1	96-3474-86	*Lintrumma höger	*Cable drum right
6	1	96-3475-86	*Lintrumma vänster	*Cable drum left
7	1	96-3500-78	*Fästskena för portblad	*Fixing strip
	1	96-3315-XX	Vals, komplett, Ovitör	Drum roll complete, Ovitör
	1	96-3415-XX	*Valsrör med axlar	*Drum roll with shafts
1	1	66-3602-85	**Axel, kort	**Stub axle, short
2	1	66-3612-85	**Axel lång drivsida	**Stub axle, motor side
3	2	66-3661-85	**Valsgavel	**Drum roll end boss
4	1	96-3399-00	**Valsrör	**Drum roll tube
5	1	96-3474-86	*Lintrumma höger	*Cable drum right
6	1	96-3475-86	*Lintrumma vänster	*Cable drum left
7	1	96-3500-78	*Fästskena för portblad	*Fixing strip
8	1	96-3668-79	*Kil	*Key
			<u>VERSION 2, ROSTFRITT STÅL</u>	<u>VERSION 2, STAINLESS STEEL</u>
	1	45-3316-XX	Vals, komplett, Nomadrive	Drum-roll complete, Nomadrive
1	1	45-3602-94	*Axel, kort	*Stub axle, short
2	1	45-3623-94	*Axel lång, drivsida	*Stub axle, motor side
3	2	45-3661-94	*Valsgavel	*Drum roll end boss
4	1	96-3400-00	*Valsrör	*Drum roll tube
5	1	96-3474-86	*Lintrumma höger	*Cable drum right
6	1	96-3475-86	*Lintrumma vänster	*Cable drum left
7	1	96-3502-90	*Fästskena för portblad	*Fixing strip
	1	45-3315-XX	Vals, komplett, Ovitör	Drum roll complete, Ovitör
1	1	45-3602-94	*Axel, kort	*Stub axle, short
2	1	45-3612-94	*Axel lång drivsida	*Stub axle, motor side
3	2	45-3661-94	*Valsgavel	*Drum roll end boss
4	1	96-3400-00	*Valsrör	*Drum roll tube
5	1	96-3474-86	*Lintrumma höger	*Cable drum right
6	1	96-3475-86	*Lintrumma vänster	*Cable drum left
7	1	96-3502-90	*Fästskena för portblad	*Fixing strip
8	1	96-3668-79	*Kil	*Key



RAPID ROLL TYPE 450 - SERIES 400
TÄTNING,UTBALANSERING
SEAL OVER ROLL,BALANCING MECHANISM

SIDA/PAGE 5
 ILLUSTRATION 450/1
 960102

POS FIG	ANT QUA	DET. NR. PART NO.	BENÄMNING	DESCRIPTION
9	1		Portblad	Doorblade
10	2	96-2210-XX	Linhjul med lager	Cable pulley with bearings
11	2	45-2410-94	Rostfri Bygel	Stain.steel Spring tensioner
12	2	45-1750-94	Rostfri Vajer 18m (DH 2,7-3,2M)	Stain. Steel cable 18m (DH 2,7-3,2M)
	2	45-1760-94	Rostfri Vajer 20m (DH 3,2-4,5M)	Stain. Steel cable 20m (DH 3,2-4,5M)
13	2	96-2496-84	Fjäder 600mm	Spring 600mm
	2	96-2500-79	Fjäder 950mm	Spring 950mm
	2	96-2510-79	Fjäder 1330mm	Spring 1330mm
	2	50-2516-87	Fjäder 1600mm	Spring 1600mm
	2	96-2520-79	Fjäder 2000mm	Spring 2000mm
14	1	45-4418-XX	Valstätning komplett,Rostfri	Seal over roll complete,Stain.steel
	1	96-4410-95	*Nomatex B=210	*Nomatex W=210
15	1	96-4403-90	*Vinkelprofil Rostfri	*L-profile, Stain.steel

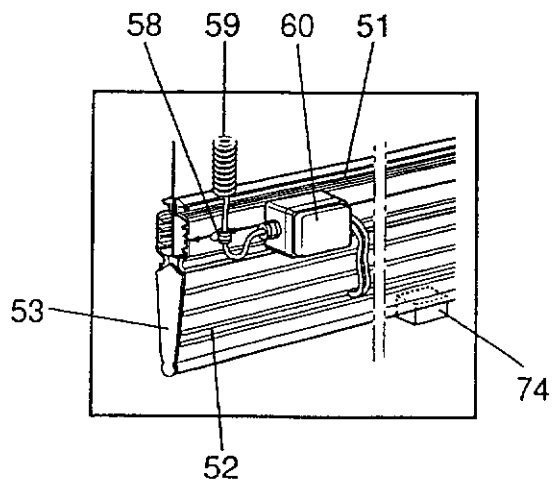
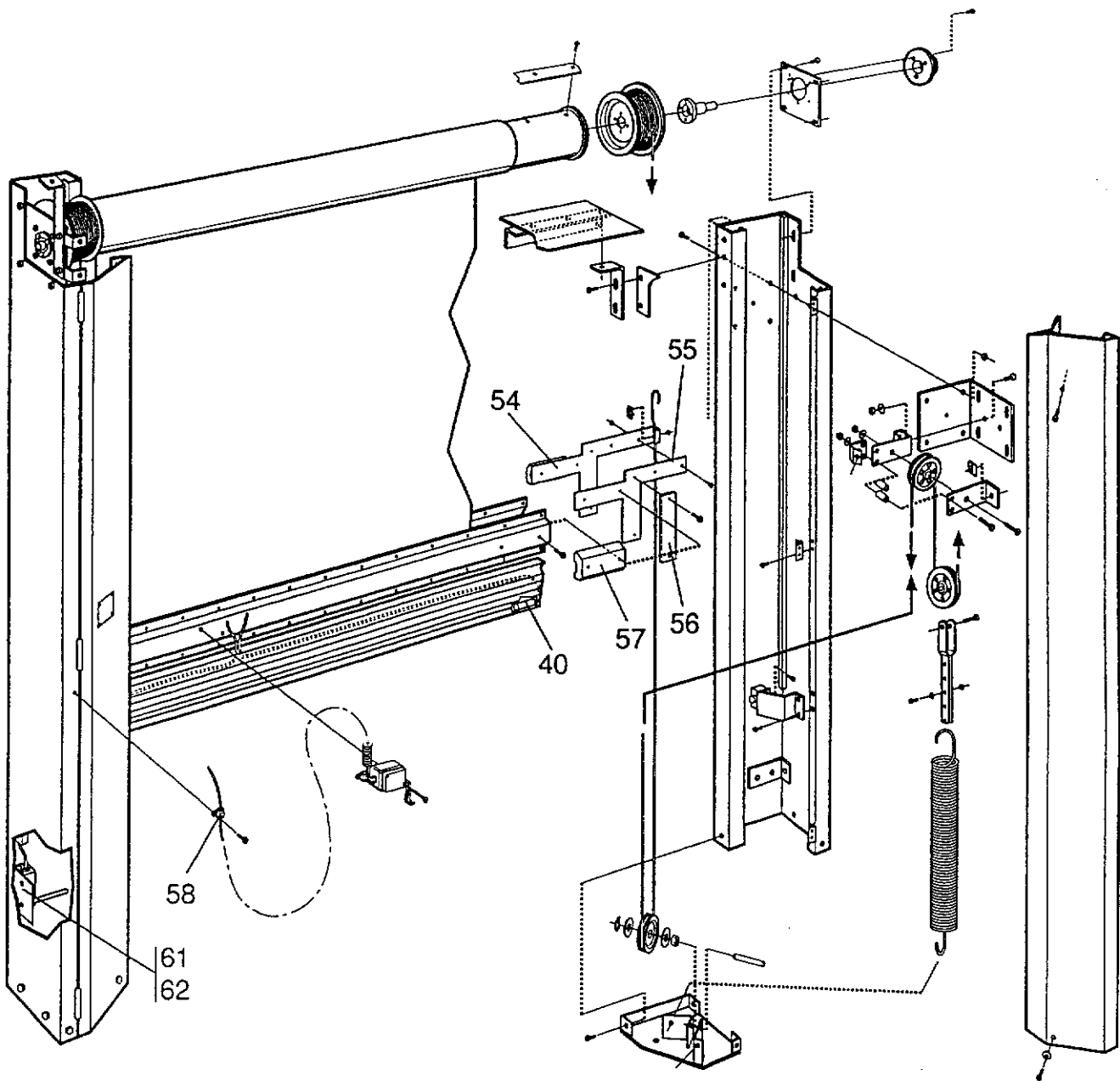


RAPID ROLL TYPE 450 - SERIES 400

KARM
FRAME

SIDA/PAGE 7
ILLUSTRATION 450/2
960102

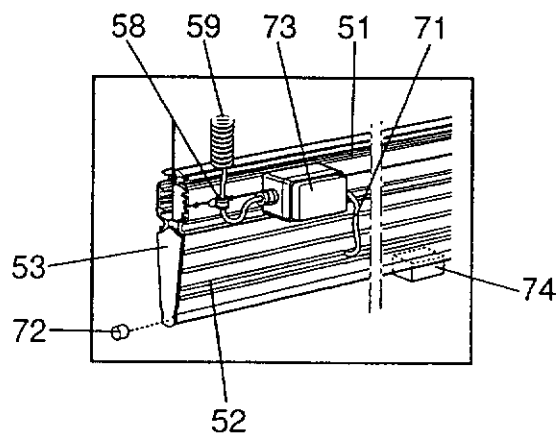
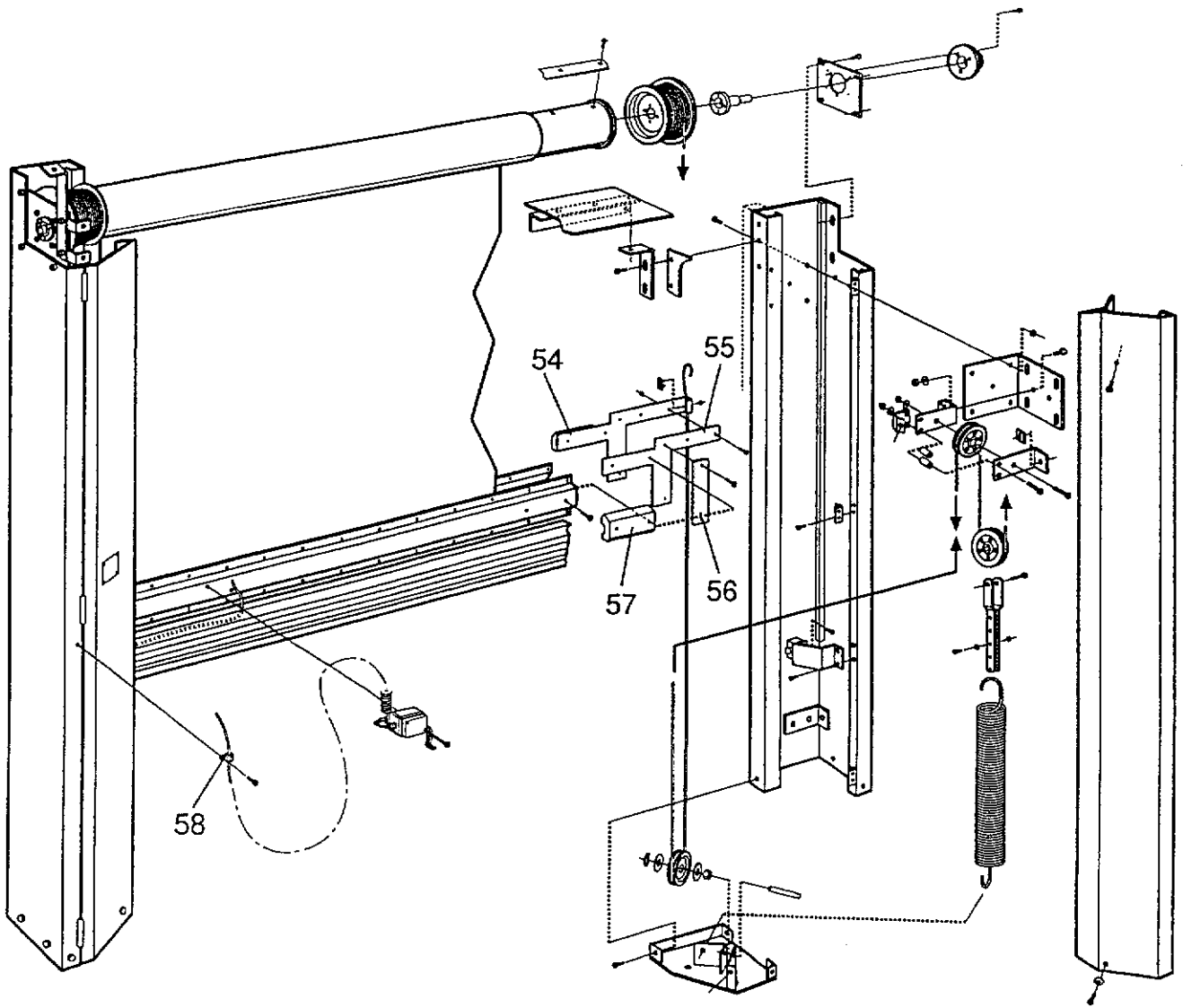
POS FIG	ANT QUA	DET. NR. PART NO.	BENÄMNING	DESCRIPTION
	1	45-4000-XX	Karm komplett, höger	Frame side complete, right
	1	45-4100-XX	*Dörr komplett, höger	*Frame door complete, right
21	1	45-4145-00	**Dörr	**Door profile
22	1	45-4111-95	**Nomatex B=100	**Nomatex W=100
23	2-3	45-4106-95	**Gångjärn	**Hinges
24	1	96-4306-95	**Tätninglist	**Rubber seal
25	1	45-6413-94	*Fästvinkel säkerhetsfotocell	*Bracket/photocell door-line
26	1	45-4630-95	*Brythjulsfäste	*Top-wall bracket
27	1	45-4706-94	*Lagerfäste	*Bearing bracket
28	1	45-4112-94	*Sidotätning	*Side seal
29	1	45-4404-94	*Konsol valstätning	*Bracket, roll seal
30	1	45-4632-94	*Brythjulskonsol	*Bracket cable pulley
31	1	45-4638-94	*Dörrfäste	*Door bracket
32	2	45-4636-94	*Distansrör brythjulskonsol	*Distance tube, bracket/cable pulley
33	2	45-4631-95	*Brythjulsbricka	*Washer, bracket/cable pulley
34	1	45-4500-95	*Bottenplåt höger	*Bottom plate right
10	2	96-2210-XX	*Linhjul med lager	*Cable pulley with bearings
35	1	45-4232-94	*Nedre fästplåt	*Bottom fixing plate
36	1	45-4204-00	*Karm höger	*Frame profile right
37	1	96-4300-79	*Skumgummitätning	*Foam seal
38	1		Skylt	Sign
39	1	96-4711-79	Lagerenhet	Bearing
40	1	96-6410-93	Fotocell Telco	Photocell Telco
41	1	96-6411-85	Hållare/fotocell "kuben"	Photocell housing
	1	45-4001-XX	Karm komplett, vänster	Frame side complete, left
	1	45-4099-XX	*Dörr komplett, vänster	*Frame door complete, left
21	1	45-4145-00	**Dörr	**door profile
22	1	45-4111-95	**Nomatex B=100	**Nomatex W=100
23	2-3	45-4107-95	**Gångjärn	**Hinges
24	1	96-4306-95	**Tätninglist	**Rubber seal
25	1	45-6413-94	*Fästvinkel säkerhetsfotocell	*Bracket/photocell door-line
26	1	45-4630-95	*Brythjulsfäste	*Top wall bracket
27	1	45-4706-94	*Lagerfäste	*Bearing bracket
28	1	45-4112-94	*Sidotätning	*Side seal
29	1	45-4404-94	*Konsol valstätning	*Bracket, roll seal
30	1	45-4632-94	*Brythjulskonsol	*Bracket cable pulley
31	1	45-4638-94	*Dörrfäste	*Door bracket
32	2	45-4636-94	*Distansrör brythjulskonsol	*Distance tube, bracket/cable pulley
33	2	45-4631-95	*Brythjulsbricka	*Washer, bracket/cable pulley
34	1	42-4501-95	*Bottenplåt vänster	*Bottom plate left
10	2	96-2210-XX	*Linhjul med lager	*Cable pulley with bearings
35	1	45-4232-94	*Nedre fästplåt	*Bottom fixing plate
36	1	45-4205-00	*Karm vänster	*Frame profile left
37	1	96-4300-79	*Skumgummitätning	*Foam seal
38	1		Skylt	Sign
39	1	96-4711-79	Lagerenhet	Bearing
40	1	96-6410-93	Fotocell Telco	Photocell Telco
41	1	96-6411-85	Hållare/fotocell "kuben"	Photocell housing



RAPID ROLL TYPE 450 - SERIES 400
BOTTENBALK, KLÄMSKYDD
BOTTOM BEAM, SAFETY EDGE - OPTICAL

SIDA/PAGE 9
 ILLUSTRATION 450/3
 960102

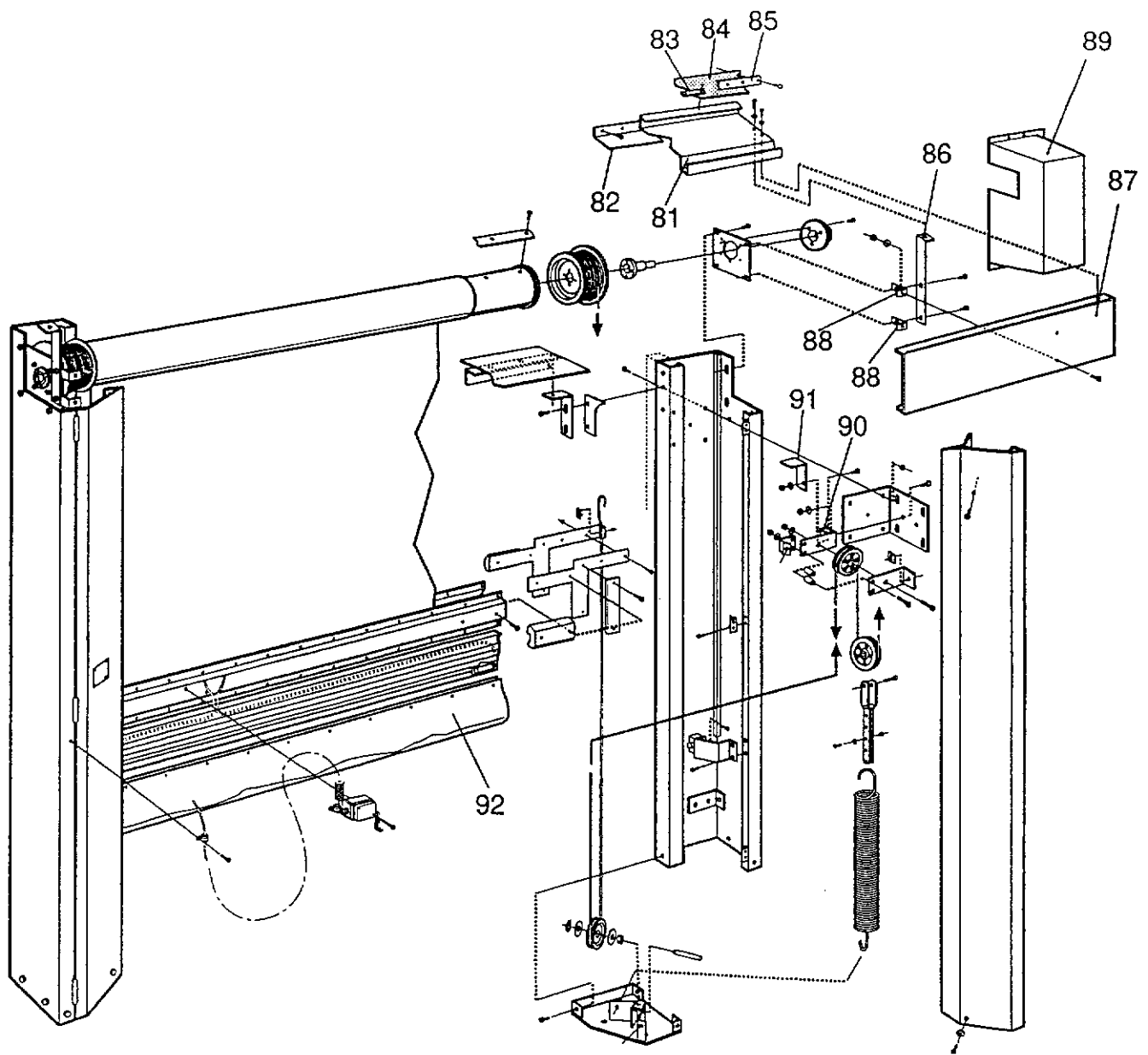
POS FIG	ANT QUA	DET. NR. PART NO.	BENÄMNING	DESCRIPTION
	1	45-1014-XX	Optiskt klämskydd, komplett	Optical safety edge, complete
40	1	96-6410-93	*Fotocell Telco	*Photocell Telco
51	2	45-1100-00	*Bottenbalk H112	*Bottom beam H112
52	1	96-1220-87	*Gummiprofil DK/OP	*Rubber profile
53	2	45-109480-94	*Täckgummi	*Rubber seal
	1	45-1500-XX	*Komplett styrskena	*Guide plate, complete
54	2	45-1512-95	**Styrskena låsdel	**Guide plate, cable clamp
55	2	45-1511-95	**Styrskena	**Guide plate
56	4	96-1501-78	**Glidstycke	**Wear pad
57	4	45-1580-95	*Tätning/distanskloss	*Plastic Bracket, guide plate
58	2	96-6090-86	*Hållare spiralkabel	*Bracket coily cable
59	1	96-6101-82	Spiralkabel, fyrledare	Coily cable, four core
60	1	50-6010-87	Apparatlåda	Connection box
61	1	96-6020-94	Gränslägesbrytare	Limit switch
62	1	45-6021-96	Konsol för brytare	Bracket limit switch



RAPID ROLL TYPE 450 - SERIES 400
 BOTTENBALK, KLÄMSKYDD
 BOTTOM BEAM, SAFETY EDGE - PNEUMATIC

SIDA/PAGE 11
 ILLUSTRATION 450/4
 960102

POS FIG	ANT QUA	DET. NR. PART NO.	BENÄMNING	DESCRIPTION
	1	45-1018-XX	Pneumatiskt klämskydd, komplett	Pneumatic safety edge, complete
51	2	45-1100-00	*Bottenbalk H112	*Bottom beam H112
52	1	96-1220-87	*Gummiprofil DK/OP	*Rubber profile
53	1	45-109480-94	*Täckgummi	*Rubber seal
	1	45-1500-XX	*Komplett styrskena	*Guide plate, complete
54	2	45-1512-95	**Styrskena låsdel	**Guide plate cable clamp
55	2	42-1511-95	**Styrskena	**Guide plate
56	4	96-1501-78	**Glidstycke	**Wear pad
57	4	45-1580-95	*Tätning/distanskloss	*Plastic bracket, guide plate
71	1	96-1308-83	*Plastslang	*Plastic tube
72	2	96-1309-88	*Ändpropp	*End piece
58	2	96-6090-86	*Hållare spiralkabel	*Bracket, coily cable
59	1	96-6100-83	Spiralkabel, tvåledare	Coily cable, two core
	1	96-6101-82	Spiralkabel, fyrläddare	Coily cable, four core
73	1	96-6000-79	Tryckvågskontakt	Pressure switch
	1	96-6015-90	Tryckvågskontakt, elektronisk	Pressure switch, electronic
74	1	96-1317-87	Gummiklack	Rubber cushion

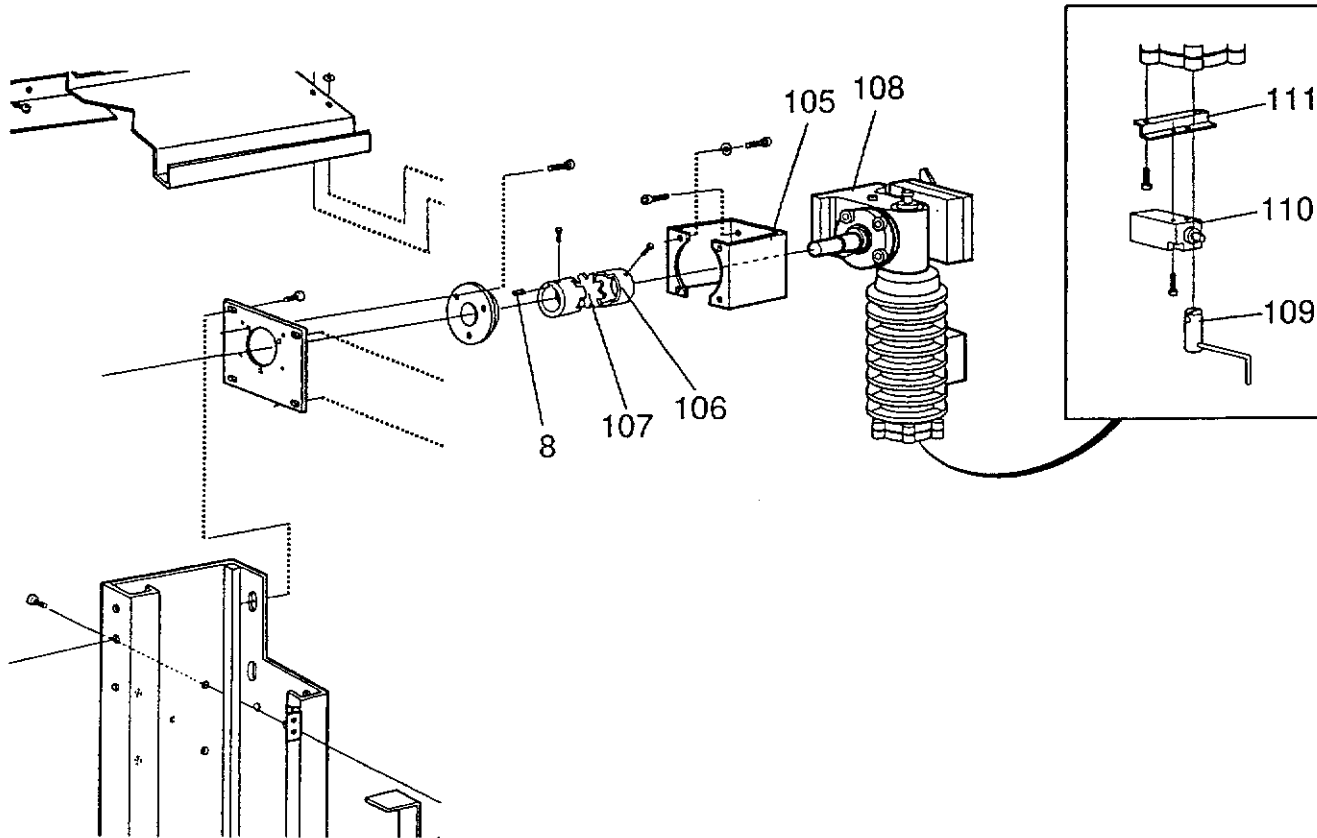
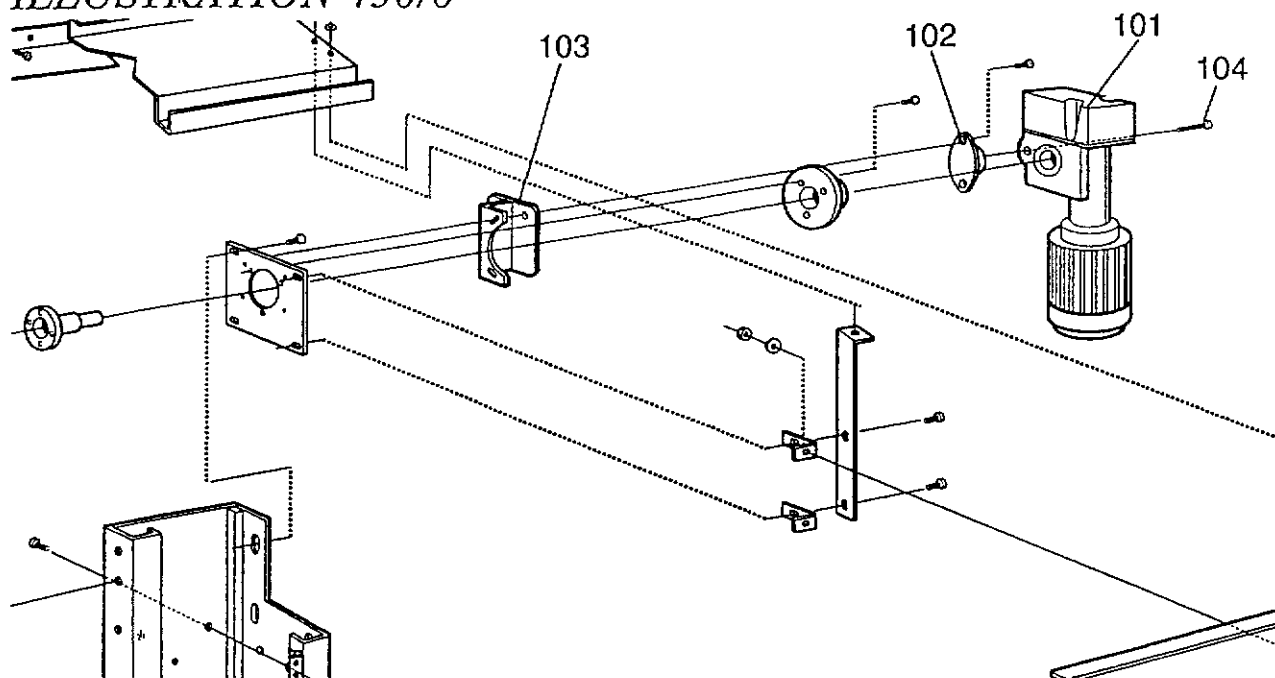


RAPID ROLL TYPE 450 - SERIES 400
 OPTIONER
 OPTIONS

SIDA/PAGE 13
 ILLUSTRATION 450/5
 960102

POS FIG	ANT QUA	DET. NR. PART NO.	BENÄMNING	DESCRIPTION
	1	45-4980-XX	Komplett tak,NOMADRIIVE	Hood complete,NOMADRIIVE
	1	45-4981-XX	Komplett tak,OVITOR	Hood complete,OVITOR
81	1	45-4980-	*Takprofil	*Hood
82	1	45-4985-	*Stödprofil	*Support profile
83	1	45-4115-00	*Fästlist	*Fastening strip
84	1	96-4984-87	*Gummiduk	*Rubber mat
85	1	45-4983-00	*Plattstål	*Flat bar steel
86	2	45-4986-96	*Fästvinkel	*Bracket,hood
	1	45-4979-XX	Komplett front,NOMADRIIVE	Fascia complete,NOMADRIIVE
	1	45-4978XX	Komplett front,OVITOR	Fascia complete,OVITOR
	1	45-4977-XX	Komplett front,Motorkåpa	Fascia complete,Drive-unit cover
87	1	45-4970-00	*Front	*Fascia
88	4	45-4993-94	*Frontkonsol	*Fixing bracket
89	1	25-4884-93	Motorkåpa,höger	Drive unit cover,right
	1	25-4885-93	Motorkåpa,vänster	Drive unit cover,left
90	2	45-4634-94	Konsol,fast anslag	Bracket, bottom beam stop
91	2	45-9212-94	Fast anslag	Bottom beam stop
92	1	96-1411-82	Vävplast gul	Yellow fabric
	1	96-1416-93	Vävplast röd	Red fabric

ILLUSTRATION 450/6



RAPID ROLL TYPE 450 - SERIES 400
DRIVENHETER
DRIVE UNITS

SIDA/PAGE 15
 ILLUSTRATION 450/6
 960102

POS FIG	ANT QUA	DET. NR. PART NO.	BENÄMNING	DESCRIPTION
101	1	96-9312-XX	Drivenhet NOMADRIVE	Drive unit NOMADRIVE
102	1	96-4830-91	Vibrationsdämpare	Shock absorber
103	1	45-4826-94	Momentarm rostfri	Torque bracket stain.steel
104	1		Skruv MC6S M10x100 Hållf.12,9	Screw MC6S M10x100 Strength 12,9
105	1	45-4814-94	Motorhylla rostfri ⁽⁵⁾	Motor bracket stain.steel ⁽⁵⁾
	1	45-4815-96	Motorhylla rostfri ⁽⁸⁾	Motor bracket stain.steel ⁽⁸⁾
106	1	96-3680-88	Koppling Rotex 28+24 Komplet ⁽⁵⁾	Coupling Rotex 28+24 complete ⁽⁵⁾
	1	96-3689-88	Koppling Rotex 28+32 ⁽⁸⁾	Coupling Rotex 28+32 ⁽⁸⁾
107	1	96-3671-89	Kuggkrans Rotex 28+24 ⁽⁵⁾	Shock absorber Rotex 28+24 ⁽⁵⁾
	1	96-3691-89	Kuggkrans Rotex 28+32 ⁽⁸⁾	Shock absorber Rotex 28+32 ⁽⁸⁾
8	2	96-3668-79	Kil	Key
108	1		Drivenhet* OVITOR *V.g. ange portens tillverkningsnummer	Drive unit* OVITOR *Please state the serial number of the door
109	1	00-9011-25	Tillval: Vev ⁽⁵⁾	Options: Crank ⁽⁵⁾
	1	00-9111-25	Vev ⁽⁸⁾	Crank ⁽⁸⁾
110	1	00-9014-25	Vevbrytare	Safety switch
111	1	00-9015-25	Konsol vevbrytare	Bracket safety switch
			⁽⁵⁾ Drivenhet strl 5	⁽⁵⁾ Drive unit size 5
			⁽⁸⁾ Drivenhet strl 8	⁽⁸⁾ Drive unit size 8

