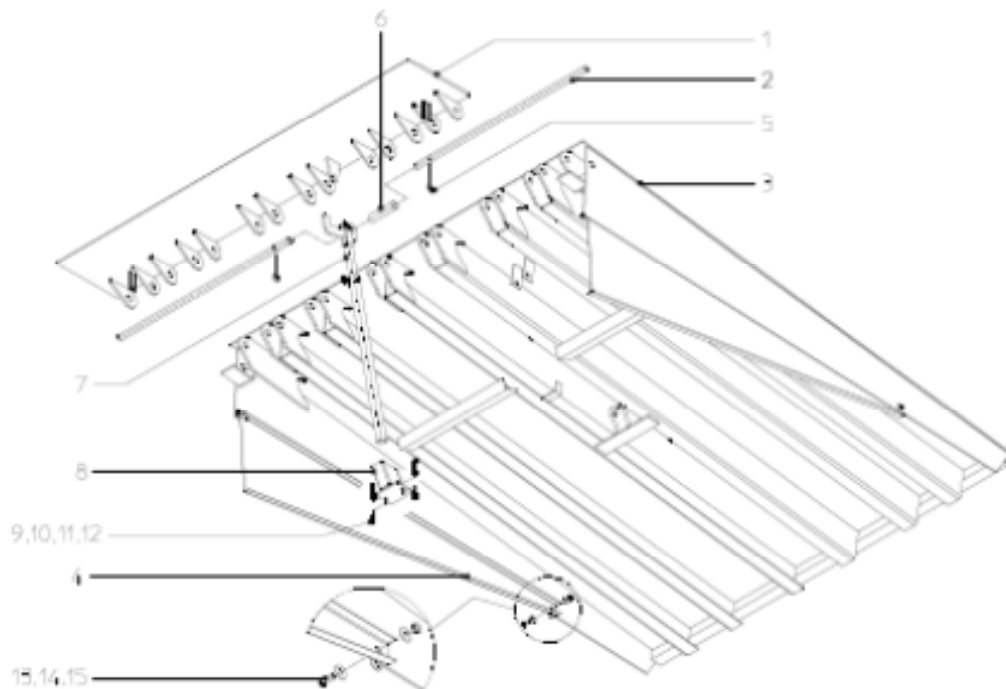


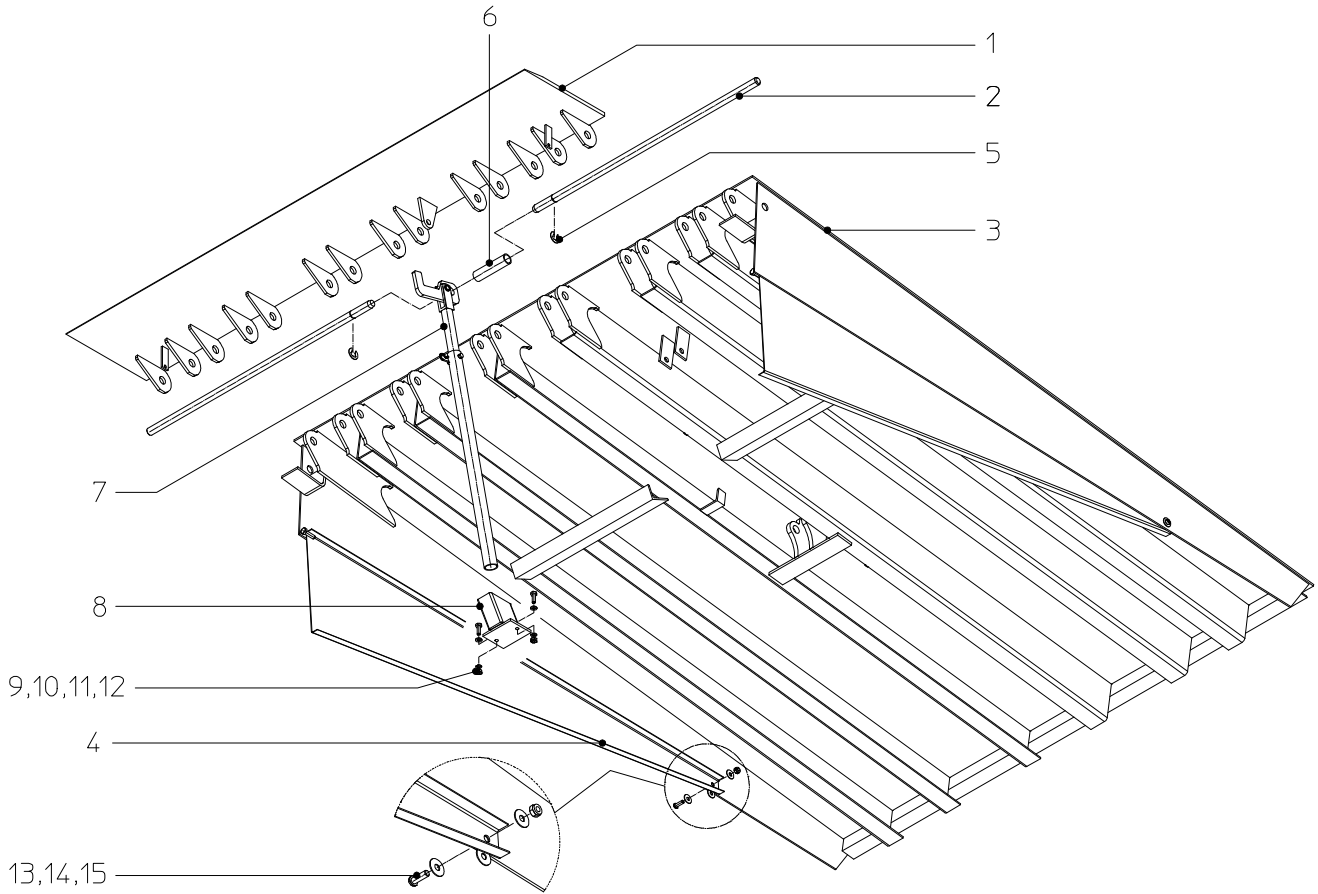


## Dock Leveller SP Model

### Spare Parts List



**Fig. A Deck and lip**



**Tabel A-1 Lips Standard (1) (thread plate)**

Width/Length	35..	40..	45..	50..	55..	60..	Lip rod (2)
SP ..17	06000300	06010300	06020300	06030300	06040300	06050300	06000002
SP ..18	06002300	06012300	06022300	06032300	06042300	06052300	06020002
SP ..20	06004300	06014300	06024300	06034300	06044300	06054300	06040002
SP ..21	06006300	06016300	06026300	06036300	06046300	06056300	06060002
SP ..22	06008300	06018300	06028300	06038300	06048300	06058300	06080002

**Tabel A-2 Deck (3) (thread plate)**

Width/Length	SP 20..	SP 22..	SP 25..	SP 28..	SP 30..	SP 35..	SP 40..	SP 45..
SP ..17	06000100	06010100	06020100	06030100	06040100	06050100	06060100	06070100
SP ..18	06002100	06012100	06022100	06032100	06042100	06052100	06062100	06072100
SP ..20	06004100	06014100	06024100	06034100	06044100	06054100	06064100	06074100
SP ..21	06006100	06016100	06026100	06036100	06046100	06056100	06066100	06076100
SP ..22	06008100	06018100	06028100	06038100	06048100	06058100	06068100	06078100

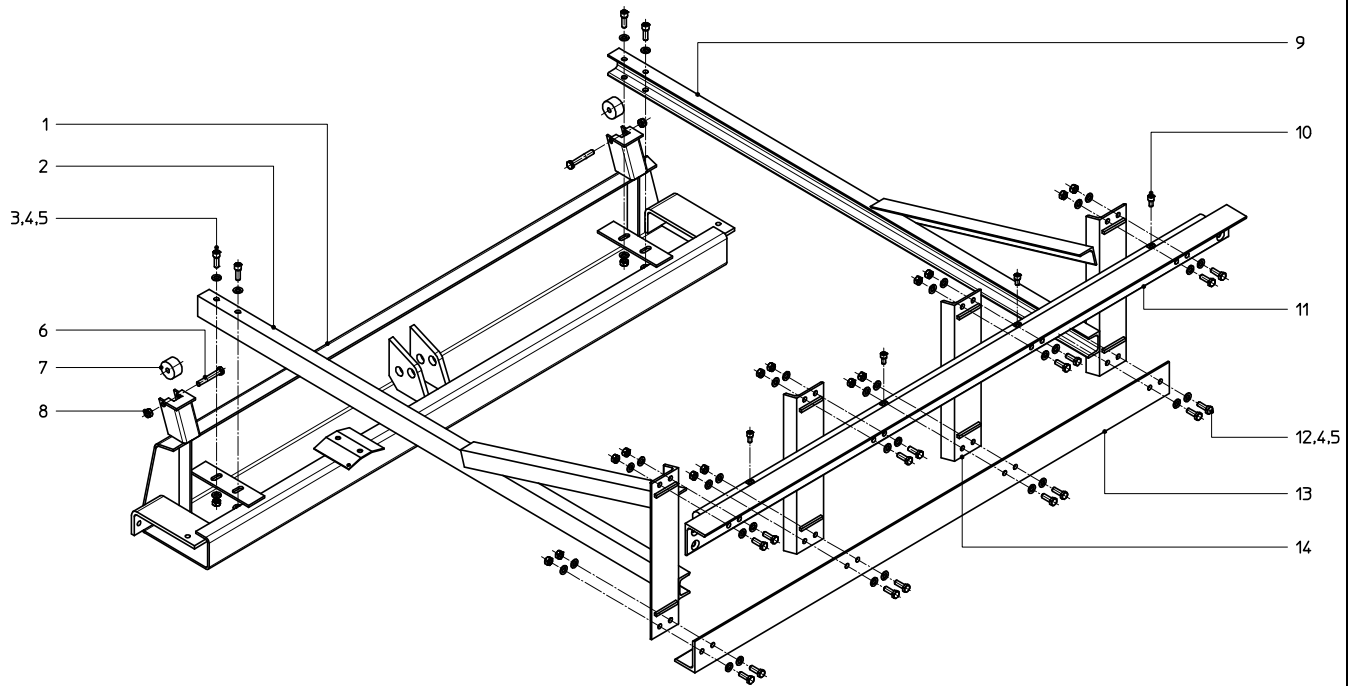
**Tabel A-3 Sliding lamel (4)**

SP 20..	SP 22..	SP 25..	SP 28..	SP 30..	SP 35..	SP 40..	SP 45..
06000215	06010030	06020030	06030030	06040030	06050030	06060030	06070030

**Tabel A-4 Additional parts**

Pos.	Reference	Description
5	65062036	Retaining ring
6	06000028	Spacer
7	06000020	Maintenance strut
8	06000035	Maintenacne support strut
9	65003407	Screw
10	65050134	Nut
11	65055019	Washer
12	65058028	Spring washer
13	65025007	Button head screw
14	65055712	Washer
15	65051034	Self locking nut

**Fig. B Frame**

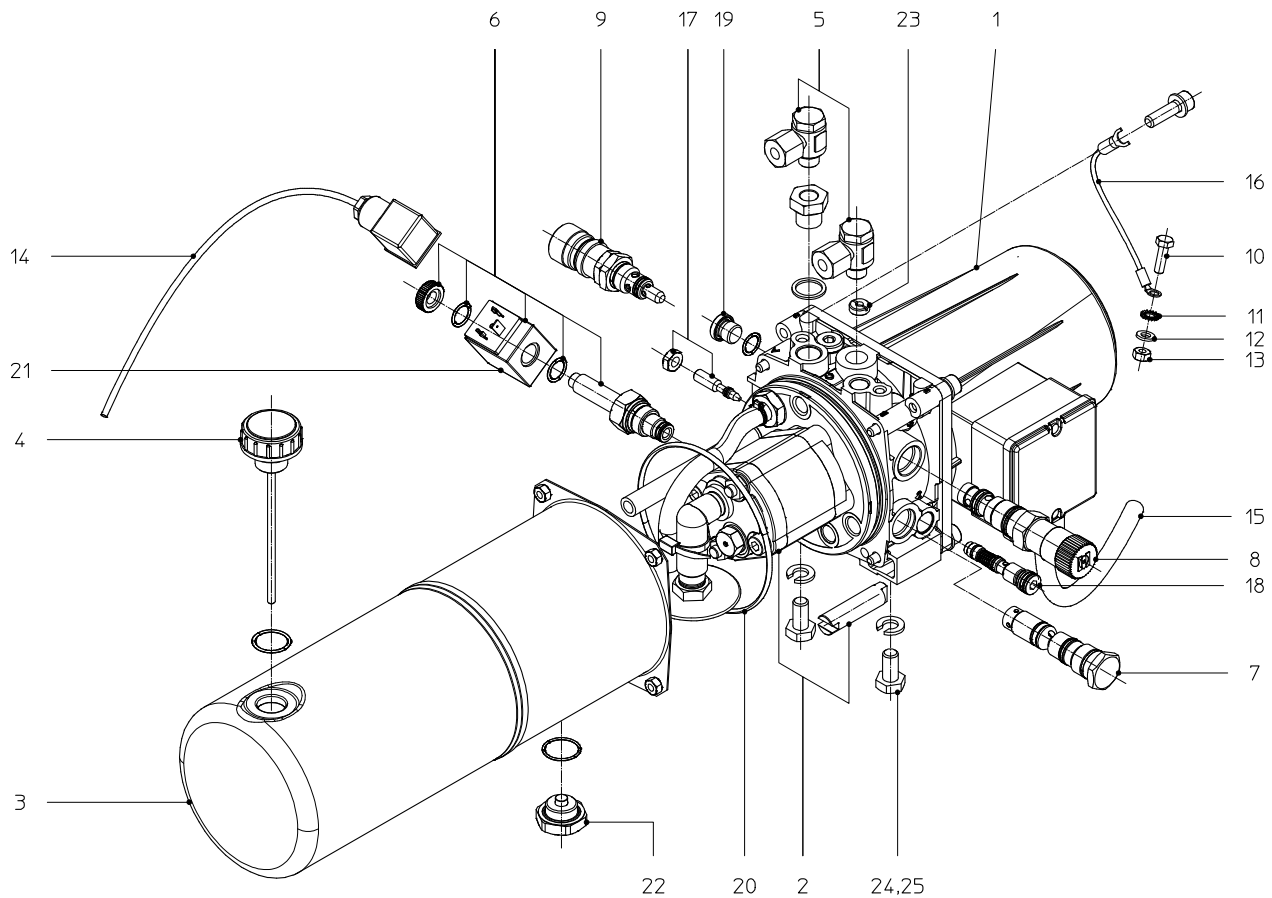


<b>Table B-1 Subframe beams</b>								
	SP 20..	SP 22..	SP 25..	SP 28..	SP 30..	SP 35..	SP 40..	SP 45..
Side beam Left (9)	06100210	06110210	06120210	06130210	06140210	06150210	06160210	06170210
Side beam Right (2)	06100215	06110215	06120215	06130215	06140215	06150215	06160215	06170215
Vert. support (14)	06100240	06100240	06100240	06100240	06100240	06150240	06150240	06150240

<b>Table B-2 Subframe parts</b>			
	Front angle (1)		Rear support (13)
SP ..17	06000220		06100230
SP ..18	06002220		06100230
SP ..20	06004220		06100230
SP ..21	06006220		06100230
SP ..22	06008220		06100230

<b>Table B-3 Additional parts</b>		
Index	Reference	Description
3	65012448	Socket head screw
4	65055021	Washer
5	65050136	Hex. nut
6	65002457	Hex. Head screw
7	02400006	Guide roller
8	65051036	Self locking nut
10	65012443	Socket head screw
12	65003448	Hex. Head screw

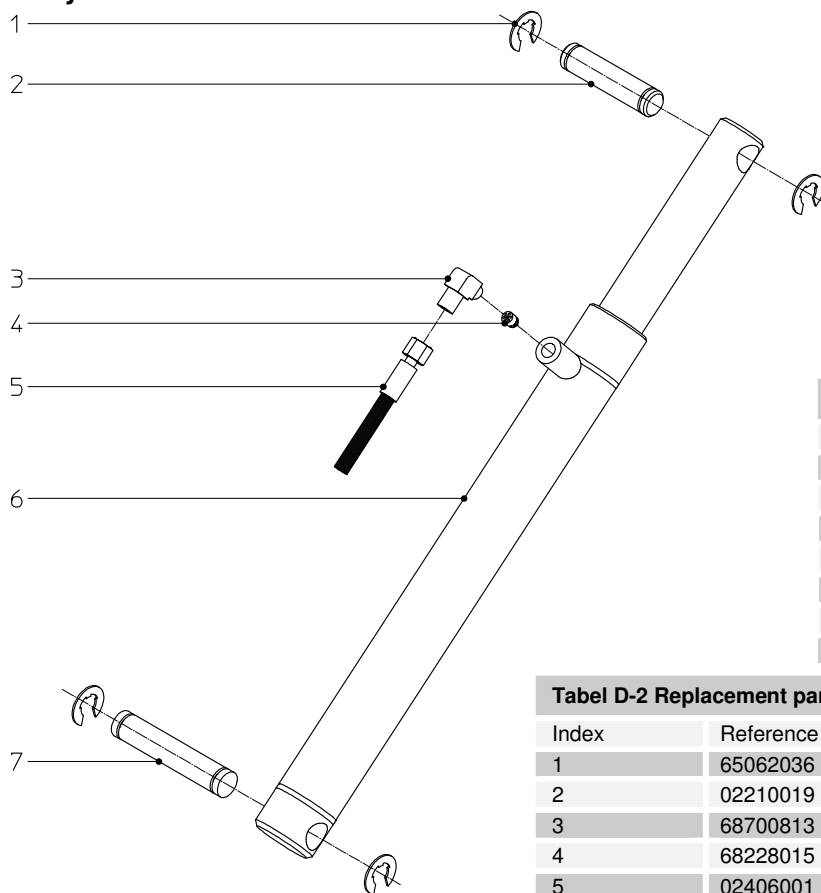
**Fig. C Hydraulic unit**



**Tabel C-1 Hydraulic unit**

Index	Reference	Description
	06000610	Hydraulic unit 3x230/400V 50Hz (excl. adaptor 5)
	06010610	Hydraulic unit 3x230/400V 60Hz (option)
	06020610	Hydraulic unit 3x200V 50Hz (option)
	06030610	Hydraulic unit 3x200V 60Hz (option)
1	02335611	Electric motor 3x230/400V 50Hz
2	06000612	Pump + coupling
3	02335613	Tank
4	02335614	Cap with dip stick
5	68702212	Adaptor
6	68308002	Stop valve (incl. coil) (See Fig. K 7)
7	02335666	Special valve (A-port) (See Fig. K 5)
8	02335667	Sequence valve (See Fig. K 3)
9	03700529	Pressure relief valve (See Fig. K 8)
10	65003287	Screw
11	1038.27.00.64	Toothed washer
12	65055015	Washer
13	65050128	Nut
14	02210021	Control cable
15	01810763	Power supply cable
16	02335602	Earth cable
17	-	Throttle (can not be dismantled) (See Fig. K 6)
18	02335670	Special valve (B-port) (See Fig. K 4)
19	06000621	Plug (M-port)
20	06000622	O-ring tank
21	69481501	Coil
22	-	Drain plug
23	-	Orifice (B-port)
24	65003403	Hex head screw
25	65055049	Washer

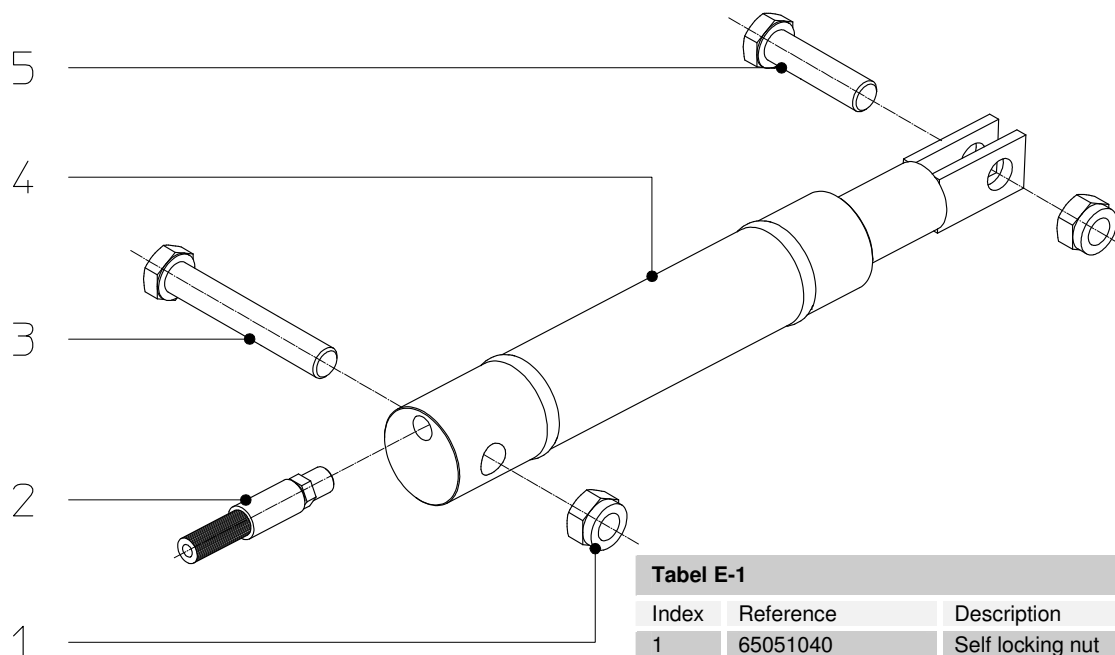
**Fig. D Main cylinder**



Tabel D-1 Cylinder	
SP 20..	06000625
SP 22..	06010625
SP 25..	06020625
SP 28..	06030625
SP 30..	
SP 35..	06050625
SP 40..	
SP 45..	06060625

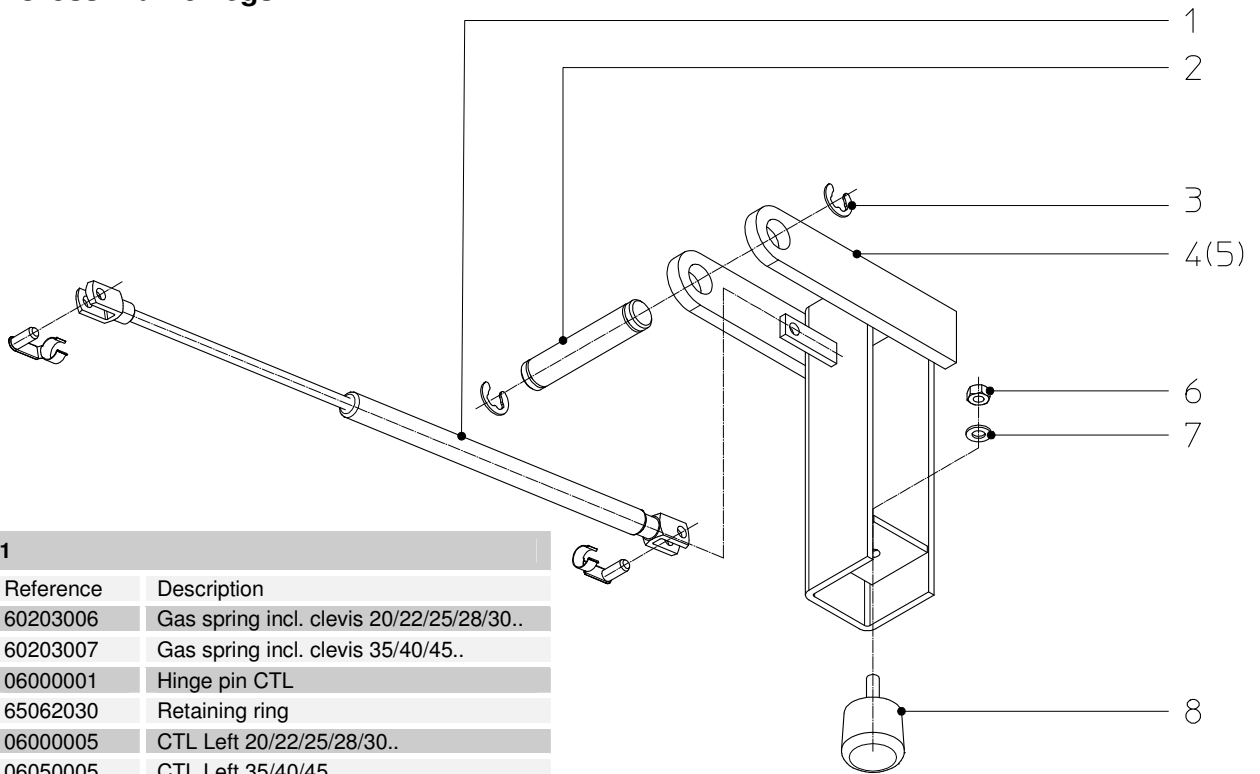
Tabel D-2 Replacement parts		
Index	Reference	Description
1	65062036	Retaining ring
2	02210019	Hinge pin (deck side)
3	68700813	Adaptor
4	68228015	Safety valve
5	02406001	Hydr. hose main cylinder
6	- see Tabel D-1 -	Main cylinder (incl. 3 and 4)
7	01510021	Hinge pin (frame side)

**Fig. E Lip cylinder**



Tabel E-1		
Index	Reference	Description
1	65051040	Self locking nut
2	06000602	Hydr. hose lip cylinder
3	65002542	Hinge screw (deck side)
4	06000680	Lip cylinder (35, 40, 45, 50)
	01510550	Lip cylinder (55 and 60)
5	65002534	Hinge screw (lip side)
6	68790034	Adaptor (only with 01510550)

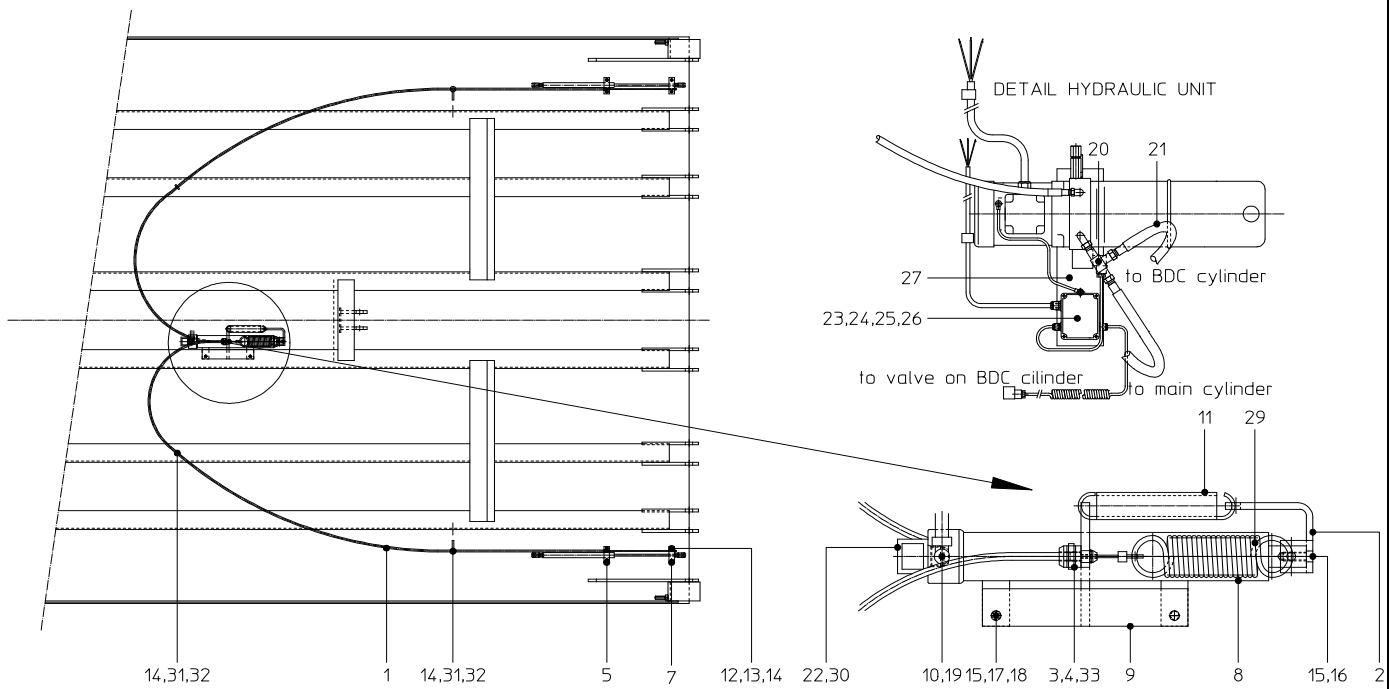
**Fig. F Cross Traffic Legs**



**Tabel F-1**

Index	Reference	Description
1	60203006	Gas spring incl. clevis 20/22/25/28/30..
	60203007	Gas spring incl. clevis 35/40/45..
2	06000001	Hinge pin CTL
3	65062030	Retaining ring
4	06000005	CTL Left 20/22/25/28/30..
	06050005	CTL Left 35/40/45..
5	06000010	CTL Right 20/22/25/28/30..
	06050010	CTL Right 35/40/45..
6	65050132	Hexagon nut
7	65055018	Washer
8	66201046	Rubber buffer CTL

**Fig. G BDC (Option)**



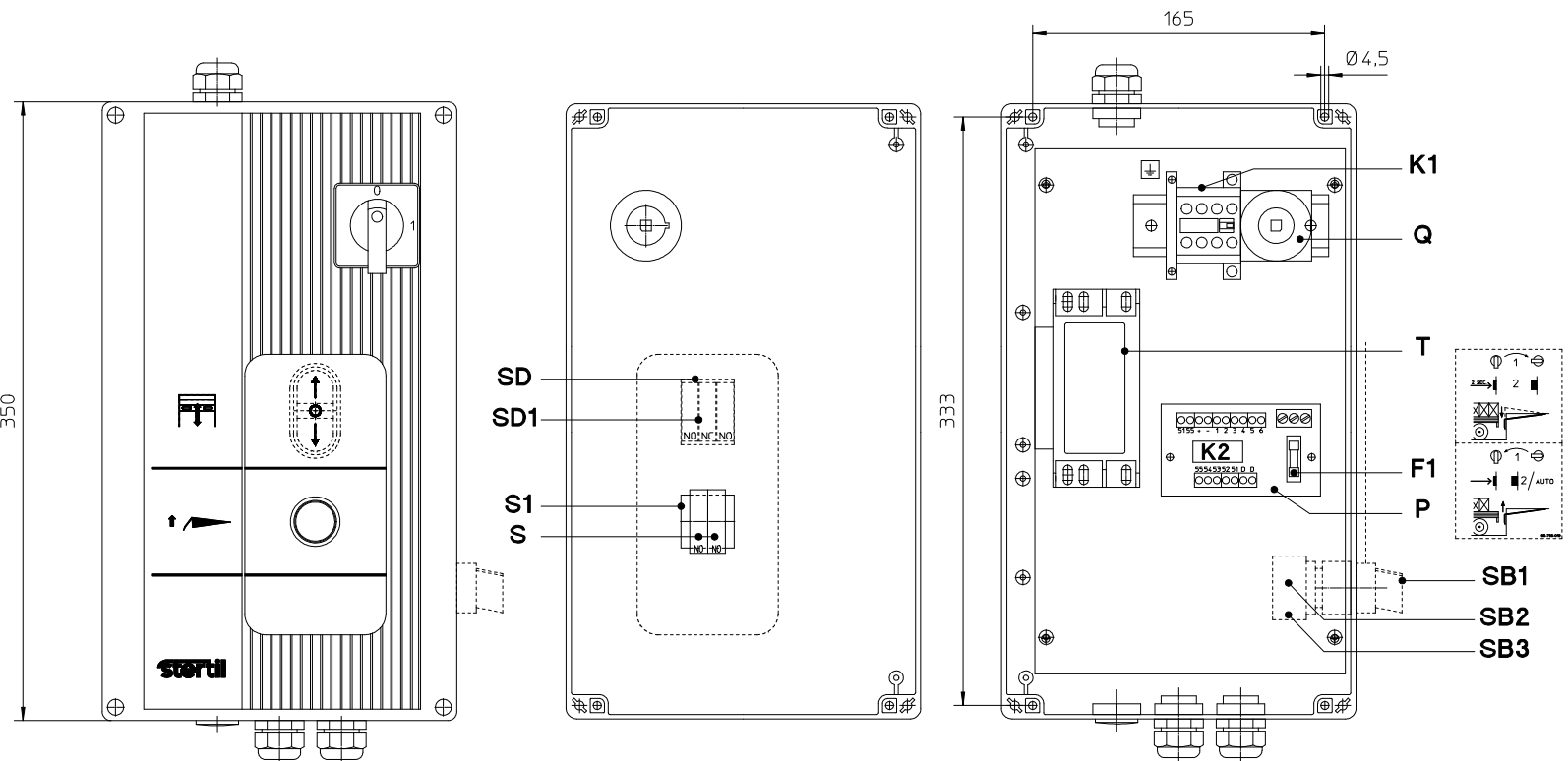
**Table G-1 Replacement parts**

Index	Description	Reference
1	Bowden cable	06000936
2	Bracket for spring	06000938
3	Cable nipple	06000937
4	Retaining ring	1038.40.01.00
5	Half clamp (on tube)	06000943
7	Half clamp (on rod)	06000944
8	Below dock cylinder	02335901
9	Mounting bracket	06000940
10	Adaptor	68790034
11	Spring	00030084
12	Hexagon screw	65002295
13	Spring ring	65058018
14	Hexagon nut	65058028
15	Hexagon screw	65003365
16	Spring ring	65058024
17	Washer	65055018
18	Hexagon nut	65050132
19	Adaptor	68702212
20	Adaptor	68703212
21	Hydraulic hose	02406002
22	Valve incl. Coil	68308500
23	Connection box incl. cables	02219055
24	Self locking nut	65034228
25	Washer	65055013
26	Self locking nut	65051024
27	Bracket for connection box	04630919
28	Control box BDC	Fig. H
29	Spring	06000939
30	Coil	69481501
31	Screw eye	00925360
32	Washer	65055015
33	Cable tie	1026.02.00.10

**Fig. H Control box**

**Tabel H-1 Control boxes**

	400V	230V	200V
Standard	06000710	06000715	06020710
Door Switch	06000725	06000730	-
Below Dock Control	06000740	06000745	-
Below Dock Control + Door Switch	06000755	06000760	-



**Tabel H-2 Replacement parts**

Index	Reference	Description
P	69900120	Printed circuit board
S1	69141039	Push button
S	69141014	Contact block
SD	69141090	Push button (optional)
SD1	69141091	Push button (optional)
SB1	69141122	Turn Switch (optional)
SB2	69141014	Contact block (optional)
SB3	69141041	Contact block (optional)

Index	Reference	Description
Q	69120028	Main switch
K1	01615652	Magnetic switch
T	69500005	Transformer 400V
	69500006	Transformer 230V (optional)
	69500011	Transformer 200V (optional)
F1	69206006	Fuse 250mA slow
	69206007	Fuse 400mA slow (optional)

