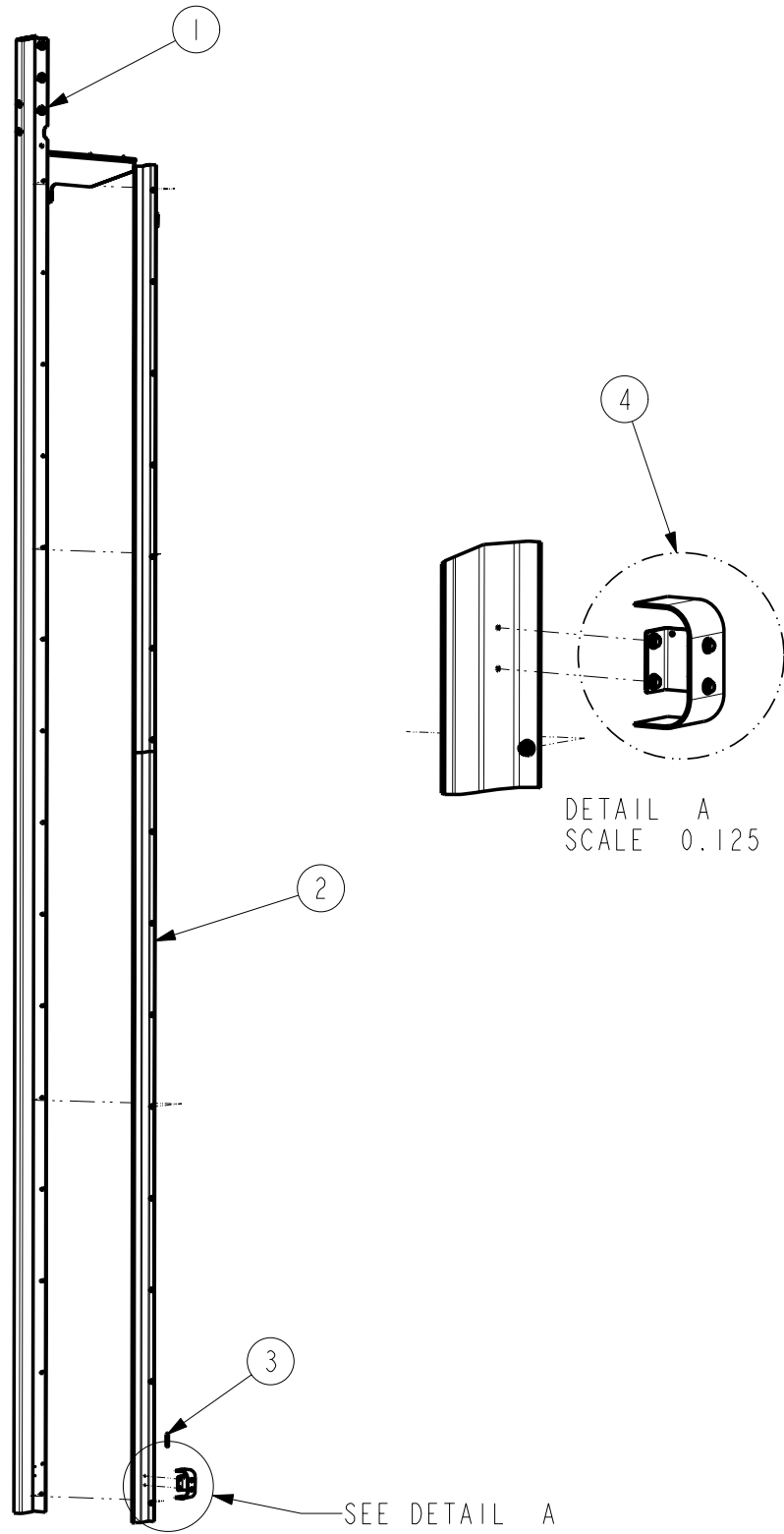


Ultra Tough M&I Door



Spare Parts List

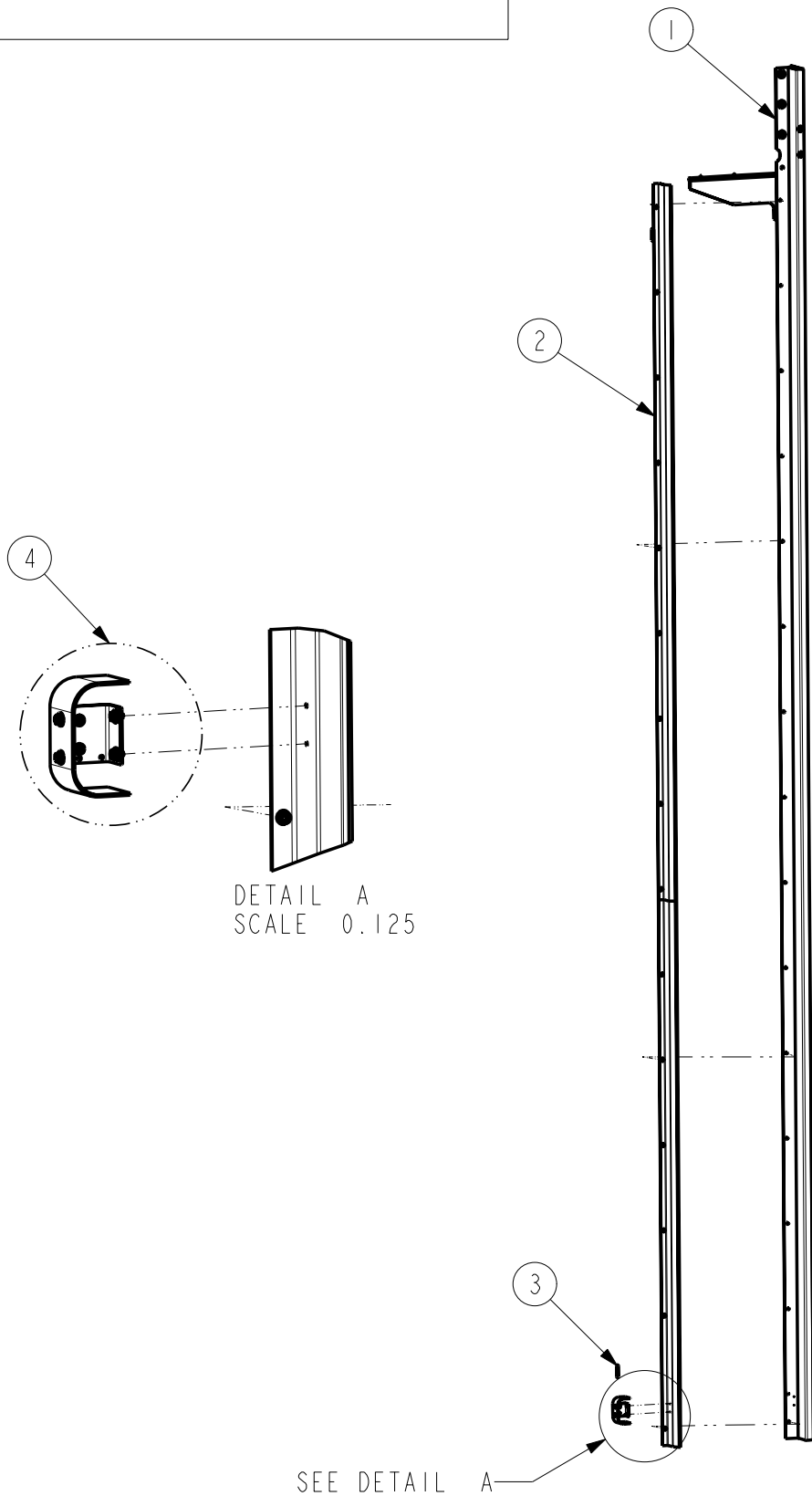
SIDE FRAME ASSEMBLY, RH



Drawing number	PARTS-MAN	Revision	0
----------------	-----------	----------	---

Pos. Item	Description	Bemerkung Note	gültig ab ▶ gültig bis valid from ▶ valid to	Art.-Nr. Item-No	Delivery time class	Preis [€] Price [€]	1	Einheit Unit	Anzahl pro Tor Quantity per door	Verschleißteil part / Sitteteilje	Wear
I	Side frame right hand 33" Header for doors W>12 or H>12 27" Header for doors W<=12 and H<=12										
	Sideframe complete, for 33" header, 12' < to <= 18' tall	>12X12	▶ 2003-09	8520TG003	C			Stck./pc.			
	Sideframe complete, for 33" header, > 18' tall	>12X12	▶ 2003-09	8520TG006	C			Stck./pc.	1		
	Sideframe complete, for 27" header, <=12' tall	<=12X12	▶ 2003-09	8520TG005	C			Stck./pc.			
1	RH Side frame weldment, for 33" header, 12' < to <= 18' tall	>12X12	▶ 2003-09	8220TG001	C			Stck./pc.			
	RH Side frame weldment, for 33" header, > 18' tall	>12X12	▶ 2003-09	8220TG005	C			Stck./pc.	1		
	RH Side frame weldment, for 27" header, <=12' tall	<=12X12	▶ 2003-09	8220TG003	C			Stck./pc.			
2	RH Side frame cover, for 33" header, 12' < to <= 18' tall	>12X12	▶ 2003-09	4521T0152	B			Stck./pc.			
	RH Side frame cover, for 33" header, > 18' tall	>12X12	▶ 2003-09	4521T0164	B			Stck./pc.	1		
	RH Side frame cover, for 27" header, <=12' tall	<=12X12	▶ 2003-09	4521T0151	B			Stck./pc.			
3	Hinge, Bullet lift off		▶ 2003-09	5005T0001	A			Stck./pc.	Max 3		
4	Photocell bracket assembly		▶ 2003-09	8120T0001	A			Stck./pc.	1		

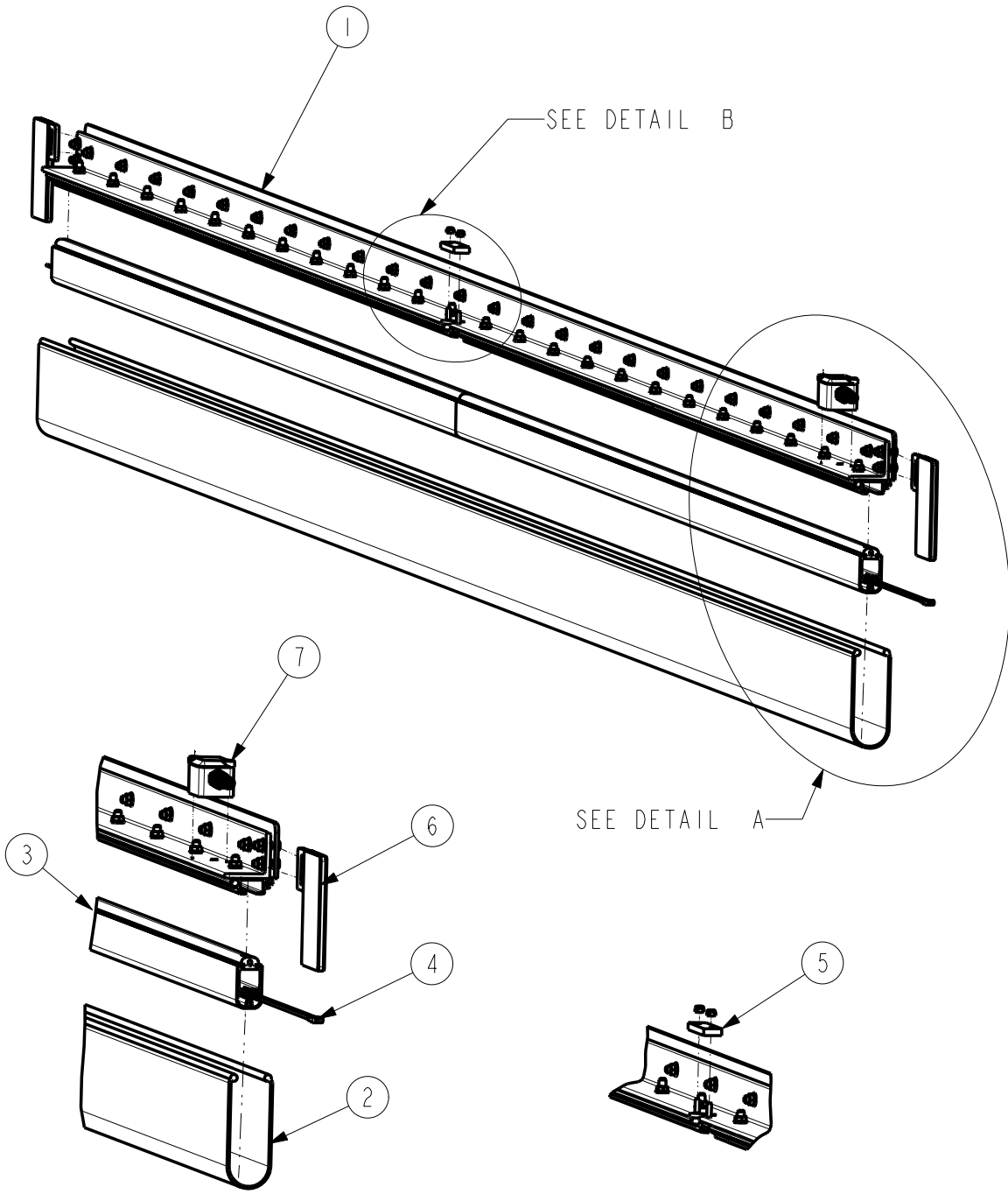
SIDE FRAME ASSEMBLY, LH



Drawing number	PARTS-MAN	Revision	0
----------------	-----------	----------	---

Pos. Item	Description	Bemerkung Note	gültig ab ▶ gültig bis valid from ▶ valid to	Art.-Nr. Item-No	Delivery time class	Preis [€] Price [€]	1	Einheit Unit	Anzahl pro Tor Quantity per door	Verschleißteil part / Sltidetalje	Wear
II	Side frame left hand 33" Header for doors W>12 or H>12 27" Header for doors W<=12 and H<=12										
	Sideframe complete, for 33" header, 12'< to <= 18' tall	>12X12	▶ 2003-09	8520TG004	C			Stck./pc.			
	Sideframe complete, for 33" header, > 18' tall	>12X12	▶ 2003-09	8520TG007	C			Stck./pc.	1		
	Sideframe complete, for 27" header, <=12' tall	<=12X12	▶ 2003-09	8520TG002	C			Stck./pc.			
1	LH Side frame weldment, for 33" header, 12'< to <= 18' tall	>12X12	▶ 2003-09	8220TG002	C			Stck./pc.			
	LH Side frame weldment, for 33" header, > 18' tall	>12X12	▶ 2003-09	8220TG006	C			Stck./pc.	1		
	LH Side frame weldment, for 27" header, <=12' tall	<=12X12	▶ 2003-09	8220TG004	C			Stck./pc.			
2	LH Side frame cover, for 33" header, 12'< to <= 18' tall	>12X12	▶ 2003-09	4521T0152	B			Stck./pc.			
	LH Side frame cover, for 33" header, > 18' tall	>12X12	▶ 2003-09	4521T0164	B			Stck./pc.	1		
	LH Side frame cover, for 27" header, <=12' tall	<=12X12	▶ 2003-09	4521T0151	B			Stck./pc.			
3	Hinge, Bullet lift off		▶ 2003-09	5005T0001	A			Stck./pc.	Max 3		
4	Photocell bracket assembly		▶ 2003-09	8120T0001	A			Stck./pc.	1		

BOTTOM BEAM ASSEMBLY



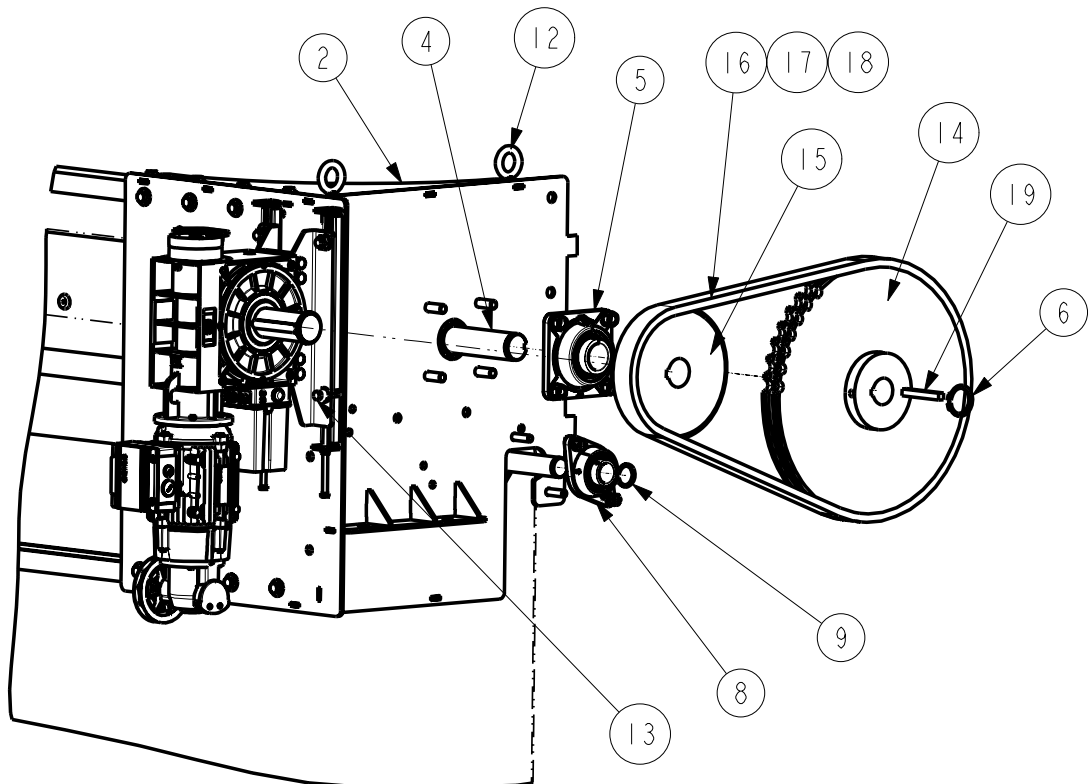
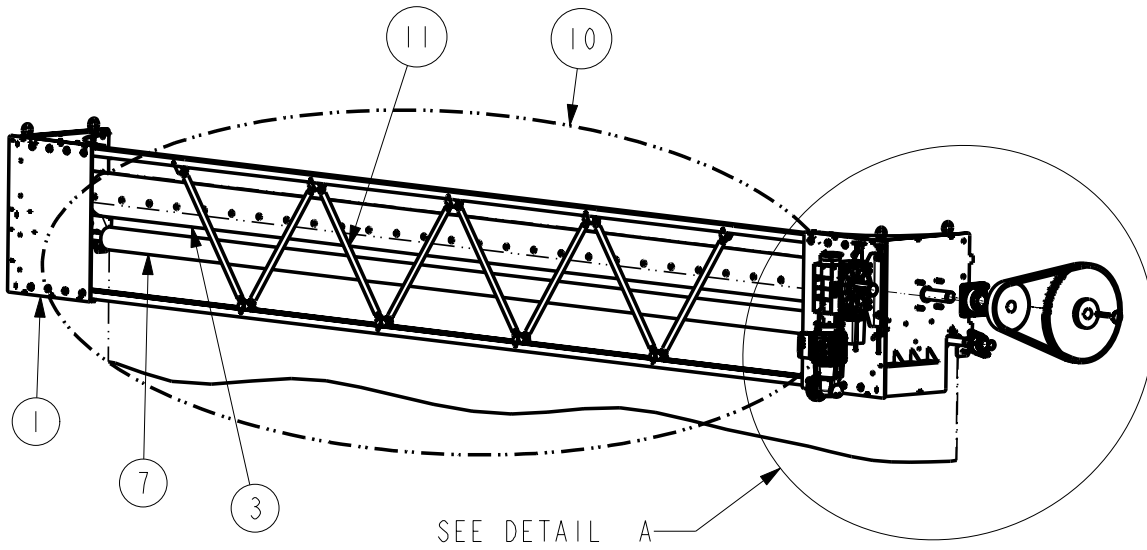
DETAIL A
SCALE 0.125

DETAIL B
SCALE 0.125

Drawing number	PARTS-MAN	Revision	0
----------------	-----------	----------	---

Pos. Item	Description	Bemerkung Note	gültig ab ▶ gültig bis valid from ▶ valid to	Art.-Nr. Item-No	Delivery time class	Preis [€] Price [€]	1	Einheit Unit	Anzahl pro Tor Quantity per door	Verschleißteil part / Sltidetaile	Wear
III	Bottom profile with safety edge										
	Bottom profile complete -standard- with coil cable	W <= 12'	▶ 2003-09	8550T0001	C			Stck./pc.			
	Bottom profile complete -standard- with coil cable	12' < W <= 18'	▶ 2003-09	8550T0002	C			Stck./pc.	1		
	Bottom profile complete -standard- with coil cable	W > 18'	▶ 2003-09	8550T0003	C			Stck./pc.			
1	Bottom beam attachment assembly w/o end brackets	W <= 12'	▶ 2003-09	8250TG002	C			Stck./pc.	1		
	Bottom beam attachment assembly w/o end brackets	12' < W <= 18'	▶ 2003-09	8250TG003	C			Stck./pc.			
	Bottom beam attachment assembly w/o end brackets	W > 18'	▶ 2003-09	8250TG004	C			Stck./pc.			
2	Extrusion, Rubber loop		▶ 2003-09	4401T0001	A			ft	1		
3	Extrusion, Rubber edge		▶ 2003-09	4401T0002	A			ft	1		
4	Electric edge assembly		▶ 2003-09	8940T0002	A			ft	1		
5	Plate, Break Away		▶ 2003-09	4521T0010	A			Stck./pc.	1		
6	Endbracket assembly		▶ 2003-09	8150T0001	A			Stck./pc.	2		
7	Enclosure electric edge		▶ 2003-09	96-6002-79	A			Stck./pc.	1		
8	Coily cable (not shown)	H <= 18'	▶ 2003-09	96-6100-83	A			Stck./pc.	1		
	Coily cable (not shown)	H > 18'	▶ 2003-09	4907T0006	A			Stck./pc.			

HEADER ASSEMBLY, 33" HEADER, > 12' X 12'

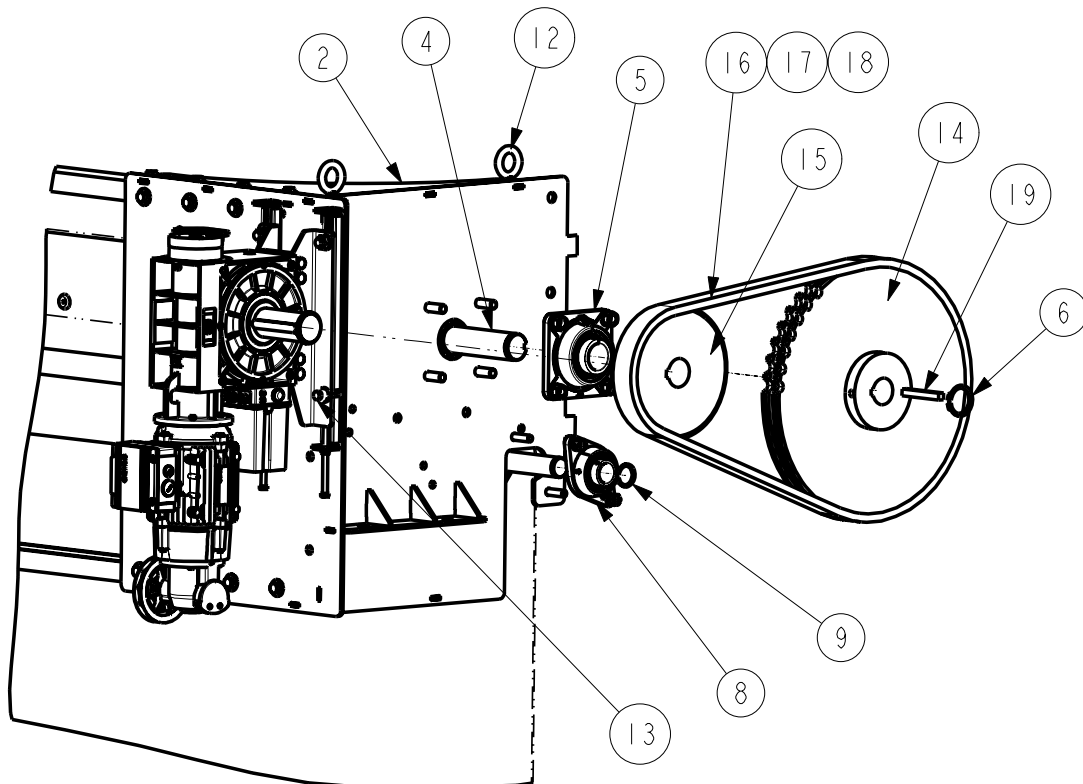
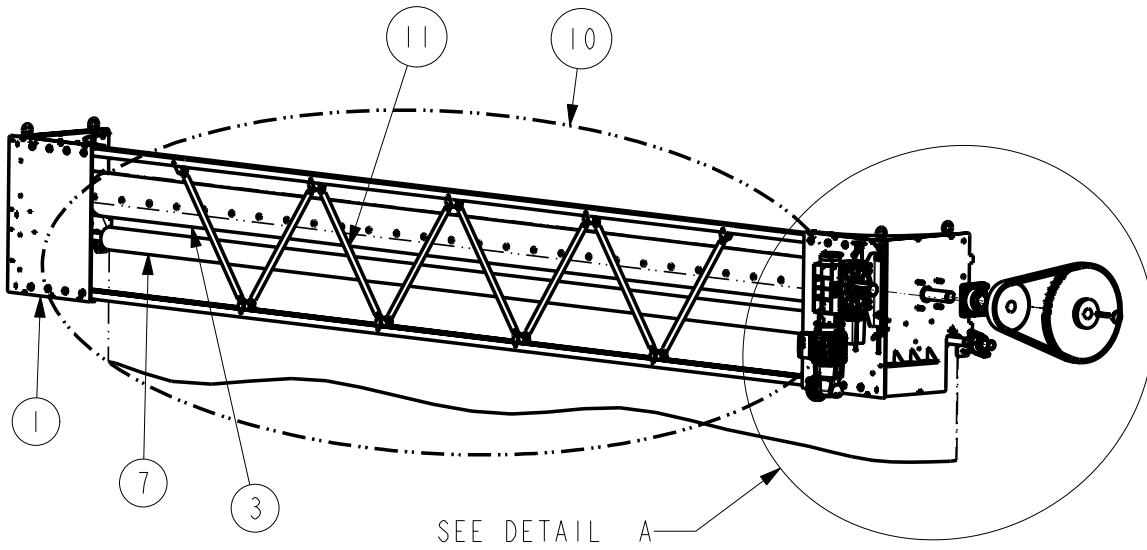


DETAIL A
SCALE 0.080

Drawing number	PARTS-MAN	Revision	0
----------------	-----------	----------	---

Pos. Item	Description	Bemerkung Note	gültig ab valid from	Art.-Nr. Item-No	Delivery time class	Preis [€] Price [€]	1	Einheit Unit	Anzahl pro Tor Quantity per door	Verschleißteil part / Shtdetailje	Wear	
IV	Large header assembly (33") 33" Header for doors W>12 or H>12	>12X12										
1	LH bearing plate assembly (non drive) RH bearing plate assembly (non drive)		► 2003-09	8140T0008 8140T0007	B B			Stck./pc. Stck./pc.	1			
2	LH bearing plate w/small drive track RH bearing plate w/small drive track Valid with 6601T0001 thru 6601T0008 operators		► 2003-09	8140T0010 8140T0009	B B			Stck./pc. Stck./pc.	1			
	LH bearing plate w/large drive track RH bearing plate w/large drive track Valid with 6601T0012 thru 6601T0017 operators		► 2003-09	8140T0012 8140T0011	B B			Stck./pc. Stck./pc.				
	Drum tube assembly Drum tube assembly Drum tube assembly	W <= 12' 12' < W <= 18' W > 18'	► 2003-09	8240TG015 8240TG002 8240TG003	B B B			Stck./pc. Stck./pc. Stck./pc.		1		
	Drive shaft		► 2003-09	4521T0005	A			Stck./pc.		2		
5	Bearing, Drum tube		► 2003-09	5103T0001	A			Stck./pc.	2			
6	Retaining ring, 2"		► 2003-09	5413T0001	A			Stck./pc.	4			
7	Idler assembly, 4" Idler assembly, 4" Idler assembly, 4.5"	W <= 12' 12' < W <= 18' W > 18'	► 2003-09	8240TG014 8240TG004 8240TG005	B B B			Stck./pc. Stck./pc. Stck./pc.	1			
	Bearing, Idler		► 2003-09	5103T0002	A			Stck./pc.	2			
	Retaining ring, 1.5"		► 2003-09	5413T0002	A			Stck./pc.	2			
10	Truss assembly 33" header Truss assembly 33" header	W <= 18' W > 18'	► 2003-09	8240TG016 8240TG010	C C			Stck./pc. Stck./pc.	1			
	Truss tube assembly		► 2003-09	8140T0013	B			Stck./pc.	Max 12			
12	Eye Bolt		► 2003-09	5499T0006	A			Stck./pc.	4			
13	Bolt & Nut Tee, small operator Valid with 6601T0001 thru 6601T0008 operators Bolt & Nut Tee, large operator Valid with 6601T0012 thru 6601T0017 operators		► 2003-09	5499T0004 5499T0003	A A			Stck./pc. Stck./pc.	4			
	Drive barrel sprocket											
	Balanced, 1 spd, >12X12 to <=18X18 (80) Balanced, 2 spd, >12X12 to <=18X18 (60) Balanced, 1 spd, >18X18 to 24X27 (76) Balanced, 2 spd, >18X18 to 24X27 (60) Unbalanced, 2 spd, >12X12 to <=16X16 (52) Unbalanced, 1 spd, >16X16 to <=20X20 (45) Unbalanced, 1 spd, >20X20 to 24X27 (60)		► 2003-09	5101T0005 5101T0004 5101T0008 5101T0007 5101T0006 5101T0015 5101T0016	A A A A A A A			Stck./pc. Stck./pc. Stck./pc. Stck./pc. Stck./pc. Stck./pc. Stck./pc.	1			
	Operator sprocket											
15	Balanced, 1 spd, >12X12 to <=18X18 (28) Balanced, 2 spd, >12X12 to <=18X18 (28) Balanced, 1 spd, >18X18 to 24X27 (26) Balanced, 2 spd, >18X18 to 24X27 (26) Unbalanced, 2 spd, >12X12 to <=16X16 (35) Unbalanced, 1 spd, >16X16 to <=20X20 (30) Unbalanced, 1 spd, >20X20 to 24X27 (30)		► 2003-09	5101T0001 5101T0001 5101T0002 5101T0002 5101T0010 5101T0014 5101T0014	A A A A A A A			Stck./pc. Stck./pc. Stck./pc. Stck./pc. Stck./pc. Stck./pc. Stck./pc.	1			
	CONTINUED ON NEXT PAGE											

HEADER ASSEMBLY, 33" HEADER, > 12' X 12'

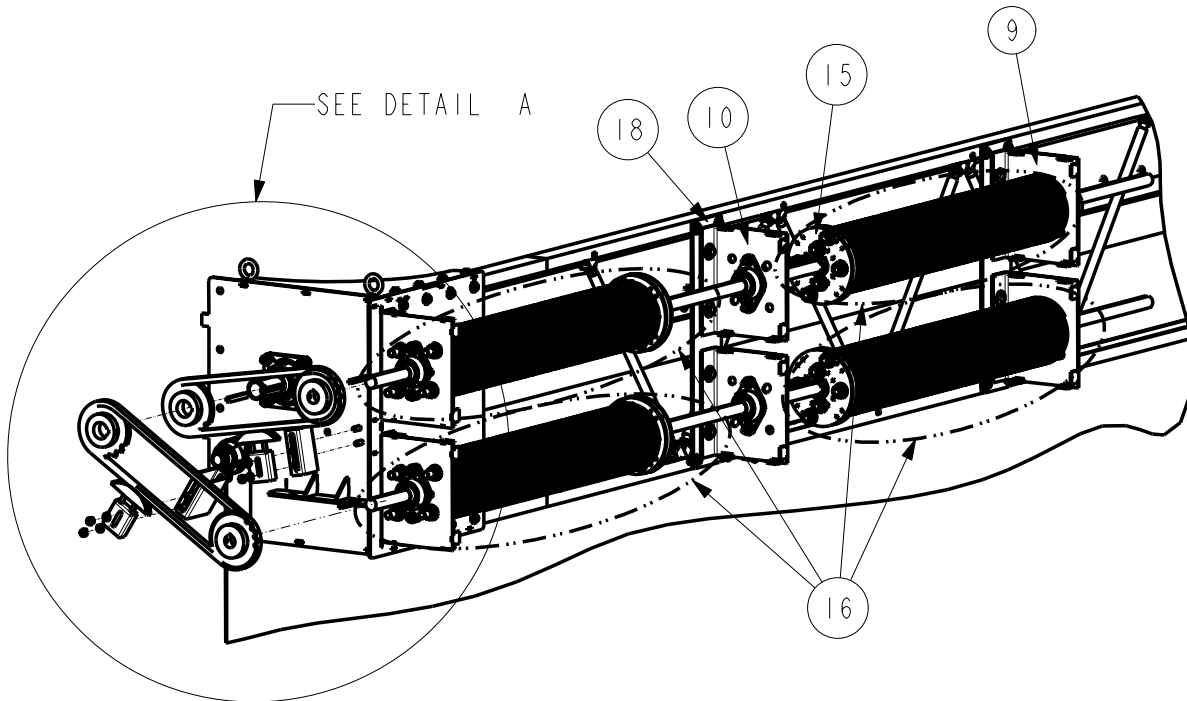


DETAIL A
SCALE 0.080

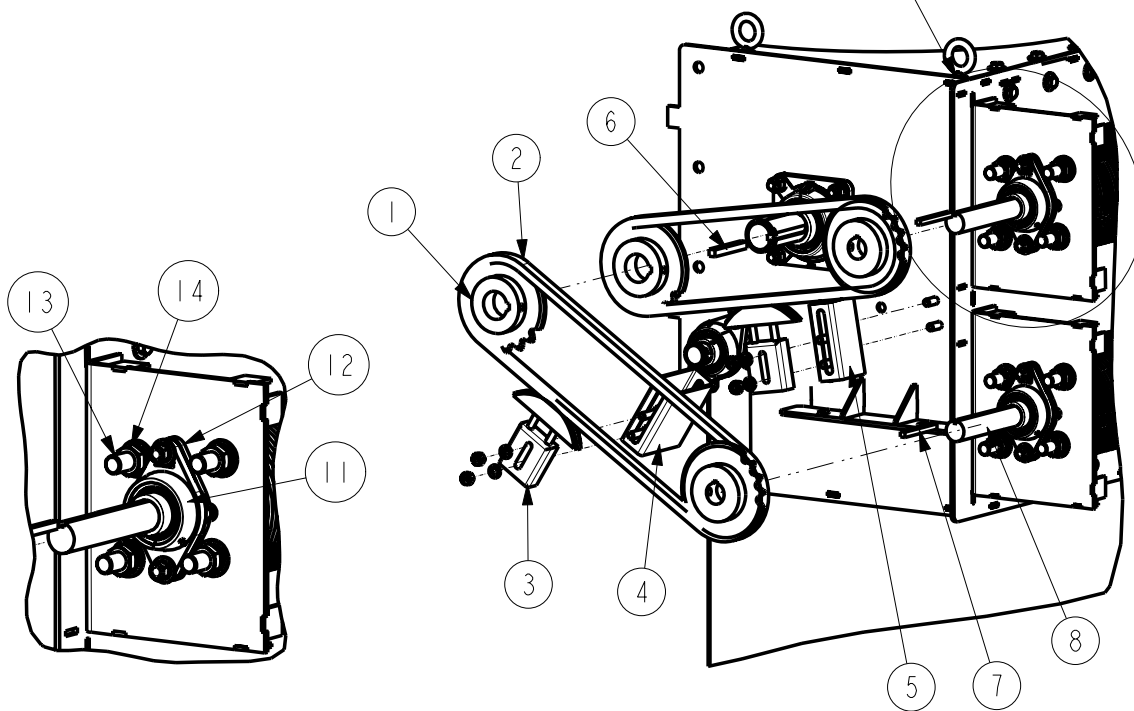
Drawing number	PARTS-MAN	Revision	0
----------------	-----------	----------	---

Pos. Item	Description	Bemerkung Note	gültig ab ▶ gültig bis valid from ▶ valid to	Art.-Nr. Item-No	Delivery time class	Preis [€] Price [€]	1	Einheit Unit	Anzahl pro Tor Quantity per door	Verschleißteil part / Slttdetalje Wear	
	CONTINUED FROM PREVIOUS PAGE										
16	Chain #60		▶ 2003-09	67-9211-01	A			ft	6		
	Balanced >12X12 to <=18X18										
	Used with sprocket 5101T0001, 5101T0004, 5101T0005										
	Chain #60, Double		▶ 2003-09	5105T0001	A			ft	7		
	Balanced >18X18 to 24X27										
	Unbalanced, >12X12 to <=16X16										
	Used with sprocket 5101T0002, 5105T0006, 5101T0007, 5101T0008, 5101T0010										
	Chain #80, Double		▶ 2003-09	5105T0006	A			ft	7		
	Unbalanced, >16X16 to 24X27										
	Used with sprocket 5101T0014, 5105T0015, 5101T0016										
17	Link, #60 Chain		▶ 2003-09	67-9211-11	A			Stck./pc.	1		
	Link, #60 Chain, Double		▶ 2003-09	5105T0002	A			Stck./pc.			
	Link, #80 Chain, Double		▶ 2003-09	5105T0007	A			Stck./pc.			
18	Link, Half, #60 Chain		▶ 2003-09	67-9211-10	A			Stck./pc.	1		
	Link, Half, #60 Chain, Double		▶ 2003-09	5105T0003	A			Stck./pc.			
	Link, Half, #80 Chain, Double		▶ 2003-09	5105T0008	A			Stck./pc.			
19	Key, 0.5" X 0.5" X 4", Undersized		▶ 2003-09	5409T0008	A			Stck./pc.	1		

SPRING ASSEMBLY, 33" HEADER, DOORS > 12' X 12'



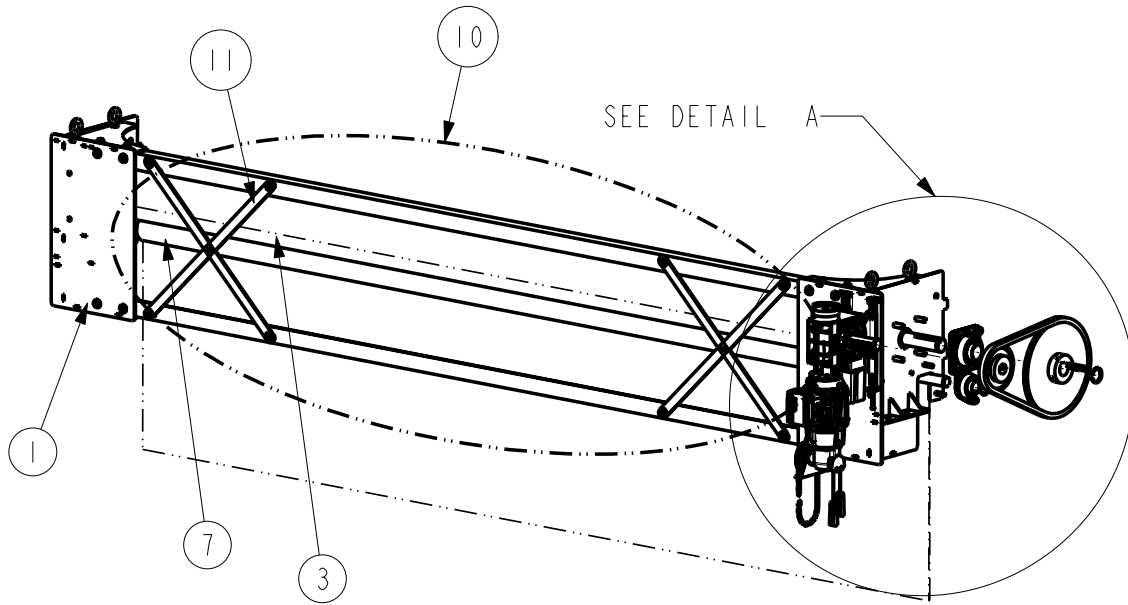
SEE DETAIL B



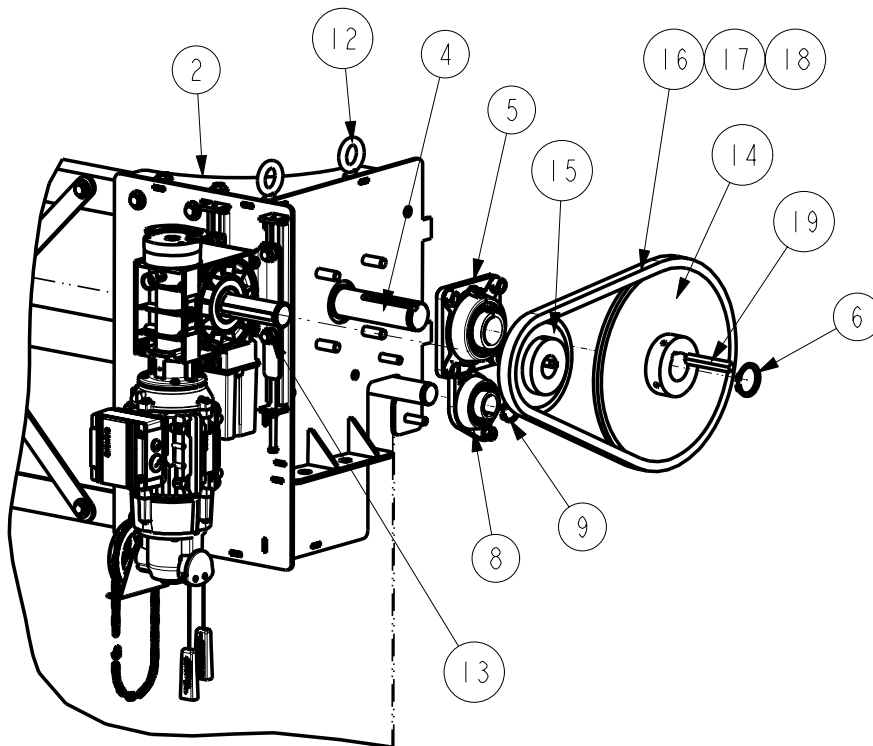
Drawing number	PARTS-MAN	Revision	0
----------------	-----------	----------	---

Pos. Item	Description	Bemerkung Note	gültig ab ► gültig bis valid from ► valid to	Art.-Nr. Item-No	Delivery time class	Preis [€] Price [€]	1	Einheit Unit	Anzahl pro Tor Quantity per door	Verschleißteil part / Shtdetailje	Wear
V	Spring Assembly (33" header) 33" Header for doors W>12 or H>12	>12X12									
1	Sprocket , 2" bore, 0.5" key		► 2003-09	5101T0012	A			Stck./pc.	Max 2		
2	Chain, #60		► 2003-09	67-9211-01	A			FT	6		
	Link, #60 Chain		► 2003-09	67-9211-11	A			Stck./pc.	Max 2		
	Link, Half, #60 Chain		► 2003-09	67-9211-10	A			Stck./pc.	Max 2		
3	Tensioner, #60 Chain, Automatic		► 2003-09	5102T0001	A			Stck./pc.	Max 2		
4	Bracket, Chain tensioner, Outside, Large		► 2003-09	4521T0065	A			Stck./pc.	Max 1		
5	Bracket, Chain tensioner, Inside, Large		► 2003-09	4521T0066	A			Stck./pc.	Max 1		
6	Key, 0.5" X 0.5" X 4", Undersized		► 2003-09	5409T0008	A			Stck./pc.	Max 1		
7	Key, 0.375" X 0.375" X 4", Undersized		► 2003-09	5409T0011	A			Stck./pc.	Max 2		
8	Shaft, 1.5 O.D.		► 2003-09	4521T0064	A			Stck./pc.	Max 2		
9	Support, Spring attachment, Weldment		► 2003-09	4521T0077	A			Stck./pc.	Max 4		
10	Support, Spring, Weldment, Middle		► 2003-09	4521T0078	A			Stck./pc.	Max 2		
11	Bearing, Idler		► 2003-09	5103T0002	A			Stck./pc.	Max 6		
12	Plate, Bearing spacer		► 2003-09	4521T0055	A			Stck./pc.	Max 4		
13	Stud, threaded, 7/8		► 2003-09	4521T0056	A			Stck./pc.	Max 40		
14	Nut, 7/8-9 Jamb, RH, Thread		► 2003-09	5407T0002	A			Stck./pc.	Max 40		
15	Winding cone assembly		► 2003-09	4521T0076	B			Stck./pc.	Max 4		
16	Spring/hardware assembly, 1.5" shaft		► 2003-09	8240TG011	D			Stck./pc.	Max 4		
17	Sprocket , 1.5" bore, 0.375" key		► 2003-09	5101T0013	A			Stck./pc.	Max 2		
18	Plate, Spring asembly, Attachment,		► 2003-09	4521T0057	A			Stck./pc.	2		

HEADER ASSEMBLY, 27", < 12' X 12'



SCALE 0.040

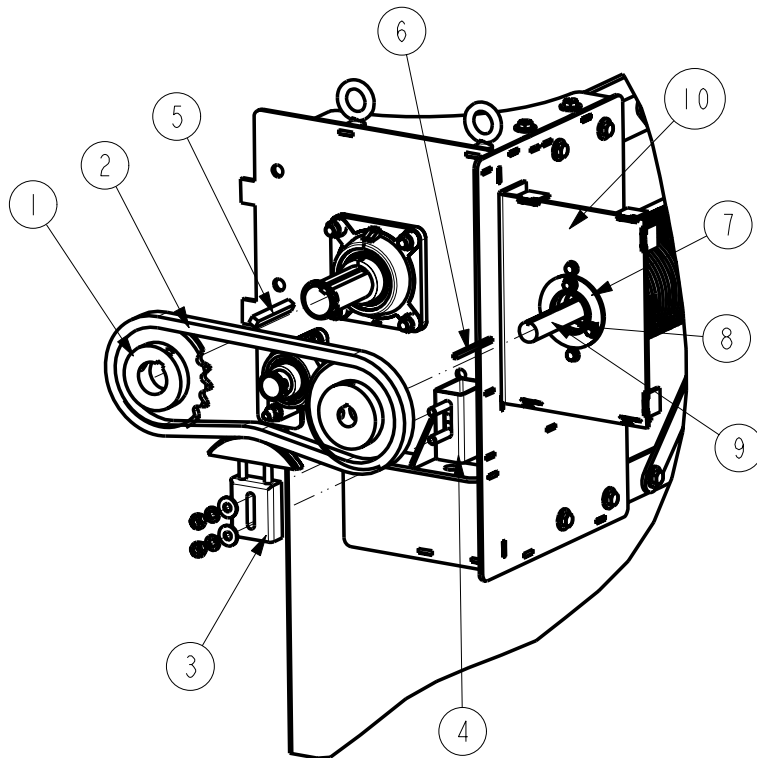
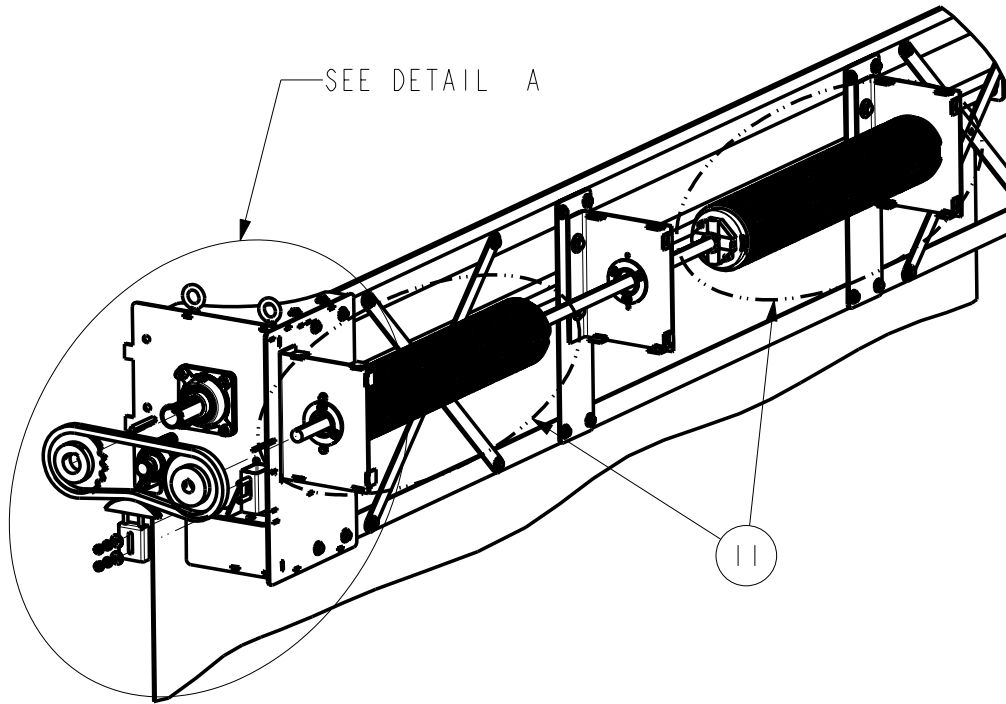


DETAIL A
SCALE 0.085

Drawing number	PARTS-MAN	Revision	0
----------------	-----------	----------	---

Pos. Item	Description	Bemerkung Note	gültig ab valid from	Art.-Nr. Item-No	Delivery time class	Preis [€] Price [€]	1	Einheit Unit	Anzahl pro Tor Quantity per door	Verschleißteil part / Shtdetailje	Wear
VI	Small header assembly (27") 27" Header for doors W<=12 and H<=12	<=12X12									
1	LH bearing plate assembly (non drive) RH bearing plate assembly (non drive)		► 2003-09	8140T0006 8140T0005	B B			Stck./pc. Stck./pc.	1		
2	LH bearing plate w/small drive track RH bearing plate w/small drive track Valid with 6601T0001 thru 6601T0008 operator		► 2003-09	8140T0004 8140T0003	B B			Stck./pc. Stck./pc.	1		
3	Drum tube assembly	W <= 12'	► 2003-09	8240TG015	B			Stck./pc.	1		
4	Drive shaft		► 2003-09	4521T0005	A			Stck./pc.	2		
5	Bearing, Drum tube		► 2003-09	5103T0001	A			Stck./pc.	2		
6	Retaining ring, 2"		► 2003-09	5413T0001	A			Stck./pc.	4		
7	Idler assembly, 4"	W <= 12'	► 2003-09	8240TG014	B			Stck./pc.	1		
8	Bearing, Idler		► 2003-09	5103T0002	A			Stck./pc.	2		
9	Retaining ring, 1.5"		► 2003-09	5413T0002	A			Stck./pc.	2		
10	Truss assembly 27" header		► 2003-09	8240TG012	C			Stck./pc.	1		
11	Brace, Spreader bar		► 2003-09	4521T0047	A			Stck./pc.	4		
12	Bolt, Eyelet		► 2003-09	5499T0006	A			Stck./pc.	4		
13	Bolt & Nut Tee, small operator Valid with 6601T0001 thru 6601T0008 operators		► 2003-09	5101T0004	A			Stck./pc.	4		
14	Drive barrel sprocket Balabnced, 1 spd, >8X8 to <=12X12 (60) Balabnced, 2 spd, >8X8 to <=12X12 (41) Unbalanced, 2 spd, >8X8 to <=12X12 (52)		► 2003-09	5101T0004 5101T0003 5101T0006	A A A			Stck./pc. Stck./pc. Stck./pc.	1		
15	Operator sprocket Balabnced, 1 spd, >8X8 to <=12X12 (28) Balabnced, 2 spd, >8X8 to <=12X12 (28) Unbalanced, 2 spd, >8X8 to <=12X12 (26)		► 2003-09	5101T0001 5101T0001 5101T0002	A A A			Stck./pc. Stck./pc. Stck./pc.	1		
16	Chain #60 Balanced, >=8X8 to <=12X12 To be used with 5101T0001, 5101T0003, 5101T0004 Chain #60, Double Unbalanced, >=8X8 to <=12X12 To be used with 5101T0002, 5105T0006		► 2003-09	67-9211-01 5105T0001	A A			ft ft	6 7		
17	Link, #60 Chain Link, #60 Chain, Double		► 2003-09	67-9211-11 5105T0002	A A			Stck./pc. Stck./pc.	1		
18	Link, Half, #60 Chain Link, Half, #60 Chain, Double		► 2003-09	67-9211-10 5105T0003	A A			Stck./pc. Stck./pc.	1		
19	Key, 0.5" X 0.5" X 4", Undersized		► 2003-09	5409T0008	A			Stck./pc.	1		

SPRING ASSEMBLY, SMALL, DOORS < 12'-0"

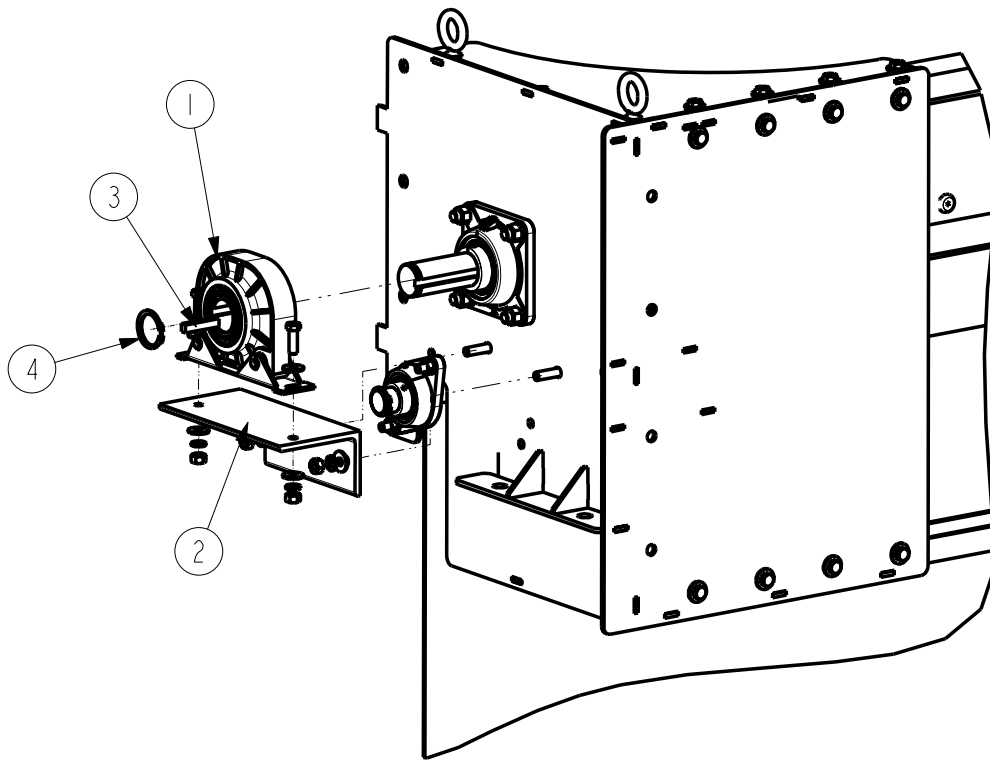


DETAIL A
SCALE 0.100

Drawing number	PARTS-MAN	Revision	0
----------------	-----------	----------	---

Pos. Item	Description	Bemerkung Note	gültig ab ▶ gültig bis valid from ▶ valid to	Art.-Nr. Item-No	Delivery time class	Preis [€] Price [€]	1	Einheit Unit	Anzahl pro Tor Quantity per door	Verschleißteil part / Sltidetalje	Wear
VII	Spring Assembly (27" header) 27" Header for doors W<=12 and H<=12	<=12X12									
1	Sprocket , 2" bore, 0.5" key		▶ 2003-09	5101T0012	A			Stck./pc.	Max 1		
2	Chain, #60		▶ 2003-09	67-9211-01	A			ft	6		
	Link, #60 Chain		▶ 2003-09	67-9211-11	A			Stck./pc.	Max 1		
	Link, Half, #60 Chain		▶ 2003-09	67-9211-10	A			Stck./pc.	Max 1		
3	Tensioner, #60 Chain, Automatic		▶ 2003-09	5102T0001	A			Stck./pc.	Max 1		
4	Bracket, Chain tensioner, Inside, Large		▶ 2003-09	4521T0066	A			Stck./pc.	Max 1		
5	Key, 0.5" X 0.5" X 4", Undersized		▶ 2003-09	5409T0008	A			Stck./pc.	Max 1		
6	Key, 0.25" X 0.25" X 4", Undersized		▶ 2003-09	5409T0010	A			Stck./pc.	Max 1		
7	Bearing flange, 1.25 in. / 30mm bearing		▶ 2003-09	96-4714-87	A			Stck./pc.	Max 6		
8	Bearing, Set screw locking, 1.25"		▶ 2003-09	67-4713-90	A			Stck./pc.	Max 3		
9	Shaft, 1.25 O.D.		▶ 2003-09	23-9220-99	A			Stck./pc.	Max 1		
10	Support, Spring, Weldment, Small		▶ 2003-09	4521T0154	A			Stck./pc.	Max 3		
11	Spring/hardware assembly, 1.25" shaft		▶ 2003-09	8240T0001	D			Stck./pc.	Max 2		
12	Plate, Spring assembly, Small		▶ 2003-09	4521T0051	A			Stck./pc.	Max 2		

INERTIA BRAKE ASSEMBLY

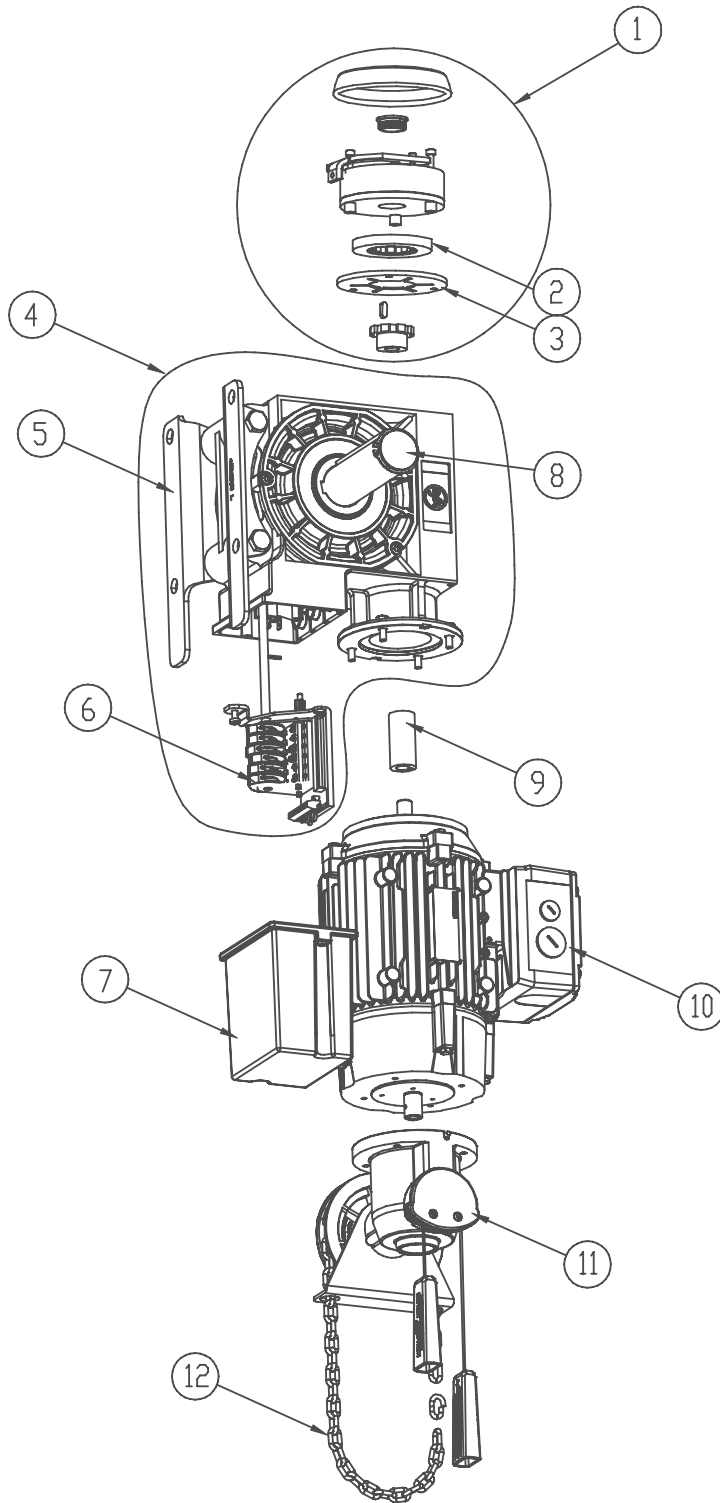


SCALE 0.100

Drawing number	PARTS-MAN	Revision	0
----------------	-----------	----------	---

Pos. Item	Description	Bemerkung Note	gültig ab ▶ gültig bis valid from ▶ valid to	Art.-Nr. Item-No	Delivery time class	Preis [€] Price [€]	1	Einheit Unit	Anzahl pro Tor Quantity per door	Verschleißteil part / Sitteteil	Wear part / Sitteteil
VIII	Safety brake assembly (unbalanced >12X12 to 24X27)										
1	Brake, Safety, 1200NM		▶ 2003-09	6622T0001	A			Stck./pc.	1		
2	Bracket, Safety brake LH (for RH drive)		▶ 2003-09	4521T0048	A			Stck./pc.	1		
	Bracket, Safety brake RH (forLH drive)		▶ 2003-09	4521T0049	A			Stck./pc.			
3	Key, 0.50" X 0.48" X 2.5"		▶ 2003-09	5413T0001	A			Stck./pc.	1		
4	Retaining ring, 2"		▶ 2003-09	96-4714-87	A			Stck./pc.	1		

DRIVE UNIT ASSEMBLY,
FOR PART #'S 6601T0001, 6601T0002, & 6601T0007
1 SPEED, >= 8' X 8' TO 24' X 27' BALANCED



Drawing number

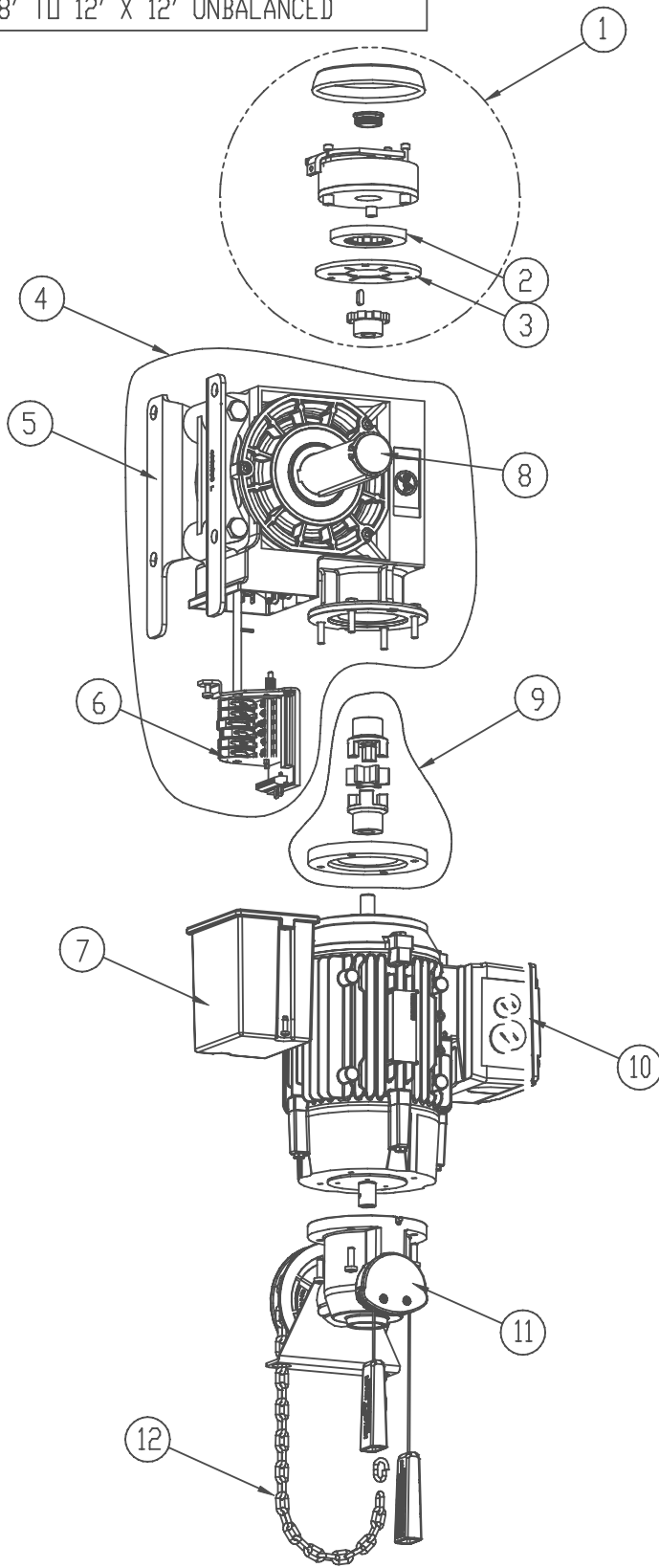
PARTS-MAN

Revision

0

Pos. Item	Description	Bemerkung Note	gültig ab ► gültig bis valid from ► valid to	Art.-Nr. Item-No	Delivery time class	Preis [€] Price [€]	1	Einheit Unit	Anzahl pro Tor Quantity per door	Verschleißteil part / Slttdetalje	Wear
IX	Drive unit (KE21) (1 spd, balanced >=8X8 to 24X27)										
	Drive unit, GFA, 1 SPEED, 220 VOLT, 210 NM		► 2003-09	6601T0002	A			Stck./pc.	1		
	Drive unit, GFA, 1 SPEED, 480 VOLT, 210 NM		► 2003-09	6601T0001	A			Stck./pc.			
	Drive unit, GFA, 1 SPEED, 600 VOLT, 210 NM		► 2003-09	6601T0007	A			Stck./pc.			
1	Brake assembly, GFA 11 NM, KE21		► 2003-09	6622T0008	A			Stck./pc.	1		
2	Friction disc, GFA, KE21, 29, & 37		► 2003-09	6626T0008	A			Stck./pc.	1		
3	Friction disc, Static, GFA, KE21, 29 & 37		► 2003-09	6626T0006	A			Stck./pc.	1		
4	Gearbox assembly, GFA, KE 21		► 2003-09	6610T0012	A			Stck./pc.	1		
5	Bracket, Gearbox mounting, KE 21 & 29		► 2003-09	6611T0004	A			Stck./pc.	1		
6	Switch, Limit, GFA		► 2003-09	6611T0007	A			Stck./pc.	1		
7	Cover, Limit switch, GFA		► 2003-09	6611T0008	A			Stck./pc.	1		
8	Shaft, Gearbox output, KE 21, &29		► 2003-09	6611T0006	A			Stck./pc.	1		
9	Coupling assembly, GFA, KE 21		► 2003-09	6611T0010	A			Stck./pc.	1		
10	Motor, GFA, 1 speed, 2 Hp, 220V	220V	► 2003-09	6620T0007	A			Stck./pc.	1		
	Motor, GFA, 1 speed, 2 Hp, 480V	480V	► 2003-09	6620T0008	A			Stck./pc.			
	Motor, GFA, 1 speed, 2 Hp, 600V	600V	► 2003-09	6620T0009	A			Stck./pc.			
11	Hoist, Hand chain, GFA 1:4.5, without chain		► 2003-09	6625T0002	A			Stck./pc.	1		
12	Chain, Hand crank		► 2003-09	5105T0004	A			ft	1		

DRIVE UNIT ASSEMBLY,
FOR PART #'S 6601T0003, 6601T0004, & 6601T0008
2 SPEED, <= 8' X 8' TO 24' X 27' BALANCED
2 SPEED, <= 8' X 8' TO 12' X 12' UNBALANCED



Drawing number

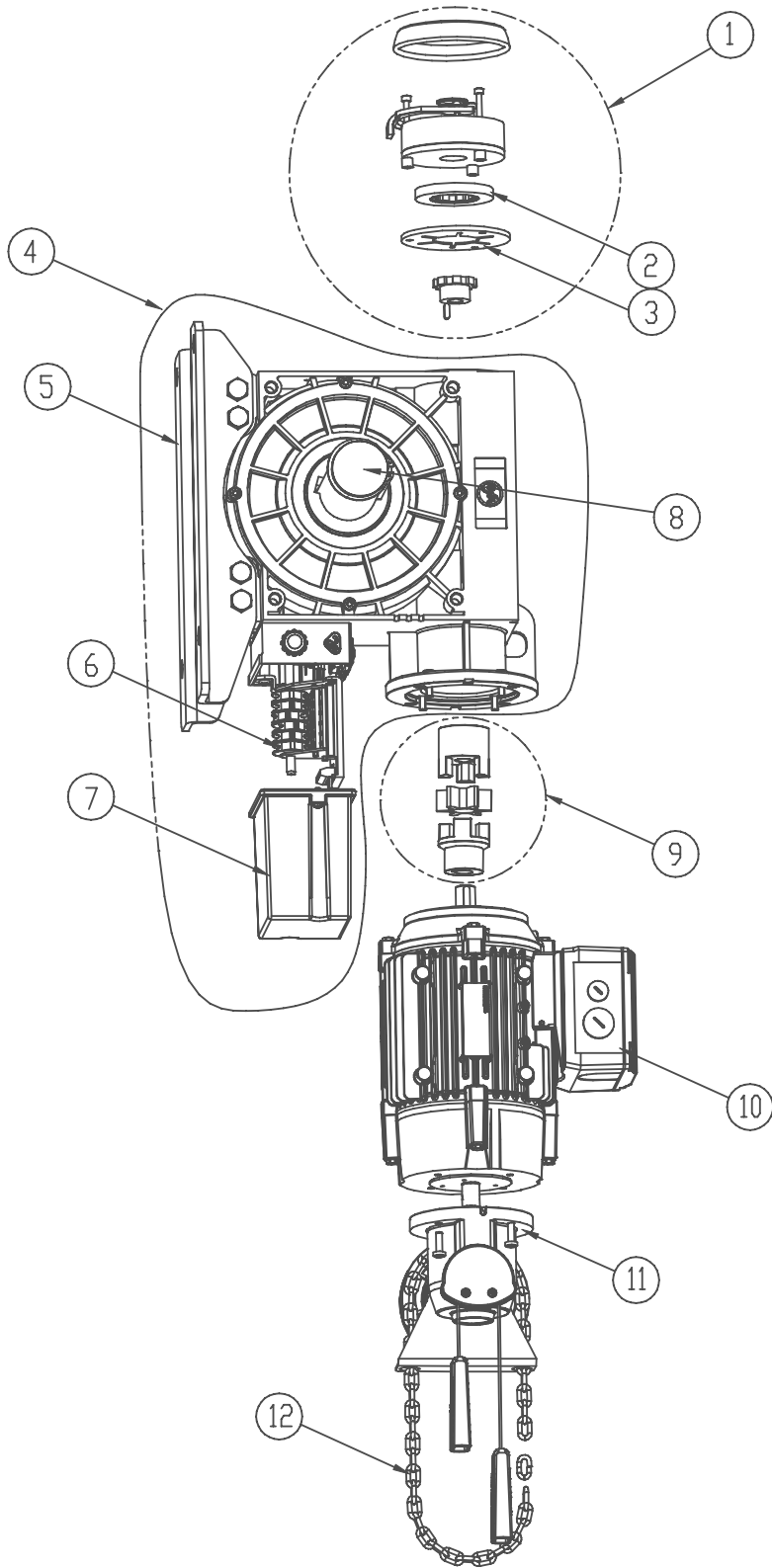
PARTS-MAN

Revision

0

Pos. Item	Description	Bemerkung Note	gültig ab ► gültig bis valid from ► valid to	Art.-Nr. Item-No	Delivery time class	Preis [€] Price [€]	1	Einheit Unit	Anzahl pro Tor Quantity per door	Verschleißteil part / Sltidetalje	Wear
X	Drive unit (KE29) (2 spd, balanced >=8X8 to 24X27 or 2 spd, unbalanced >=8X8 to 12X12)										
	Drive unit, GFA, 2 SPEED, 220 VOLT, 290 NM		► 2003-09	6601T0003	A			Stck./pc.			
	Drive unit, GFA, 2 SPEED, 480 VOLT, 290 NM		► 2003-09	6601T0004	A			Stck./pc.	1		
	Drive unit, GFA, 2 SPEED, 600 VOLT, 290 NM		► 2003-09	6601T0008	A			Stck./pc.			
1	Brake assembly, GFA 9 NM, KE29		► 2003-09	6622T0009	A			Stck./pc.	1		
2	Friction disc, GFA, KE21, 29, & 37		► 2003-09	6626T0008	A			Stck./pc.	1		
3	Friction disc, Static, GFA, KE21, 29 & 37		► 2003-09	6626T0006	A			Stck./pc.	1		
4	Gearbox assembly, GFA, KE 29		► 2003-09	6610T0011	A			Stck./pc.	1		
5	Bracket, Gearbox mounting, KE 21 & 29		► 2003-09	6611T0004	A			Stck./pc.	1		
6	Switch, Limit, GFA		► 2003-09	6611T0007	A			Stck./pc.	1		
7	Cover, Limit switch, GFA		► 2003-09	6611T0008	A			Stck./pc.	1		
8	Shaft, Gearbox output, KE 21, & 29		► 2003-09	6611T0006	A			Stck./set	1		
9	Coupling assembly, GFA, KE29		► 2003-09	6611T0011	A			Stck./pc.	1		
10	Motor, GFA, 2 speed, 2.7/0.67 Hp, 220V	220V	► 2003-09	6620T0010	A			Stck./pc.	1		
	Motor, GFA, 2 speed, 2.7/0.67 Hp, 480V	480V	► 2003-09	6620T0011	A			Stck./pc.			
	Motor, GFA, 2 speed, 2.7/0.67 Hp, 600V	600V	► 2003-09	6620T0012	A			Stck./pc.			
11	Hoist, Hand chain, GFA 1:4.5, without chain		► 2003-09	6625T0002	A			Stck./pc.	1		
12	Chain, Hand crank		► 2003-09	5105T0004	A			ft	1		

DRIVE UNIT ASSEMBLY,
FOR PART #'S 6601T0012, 6601T0013, & 6601T0014
2 SPEED, > 12' X 12' TO ≤ 16' X 16' UNBALANCED



Drawing number

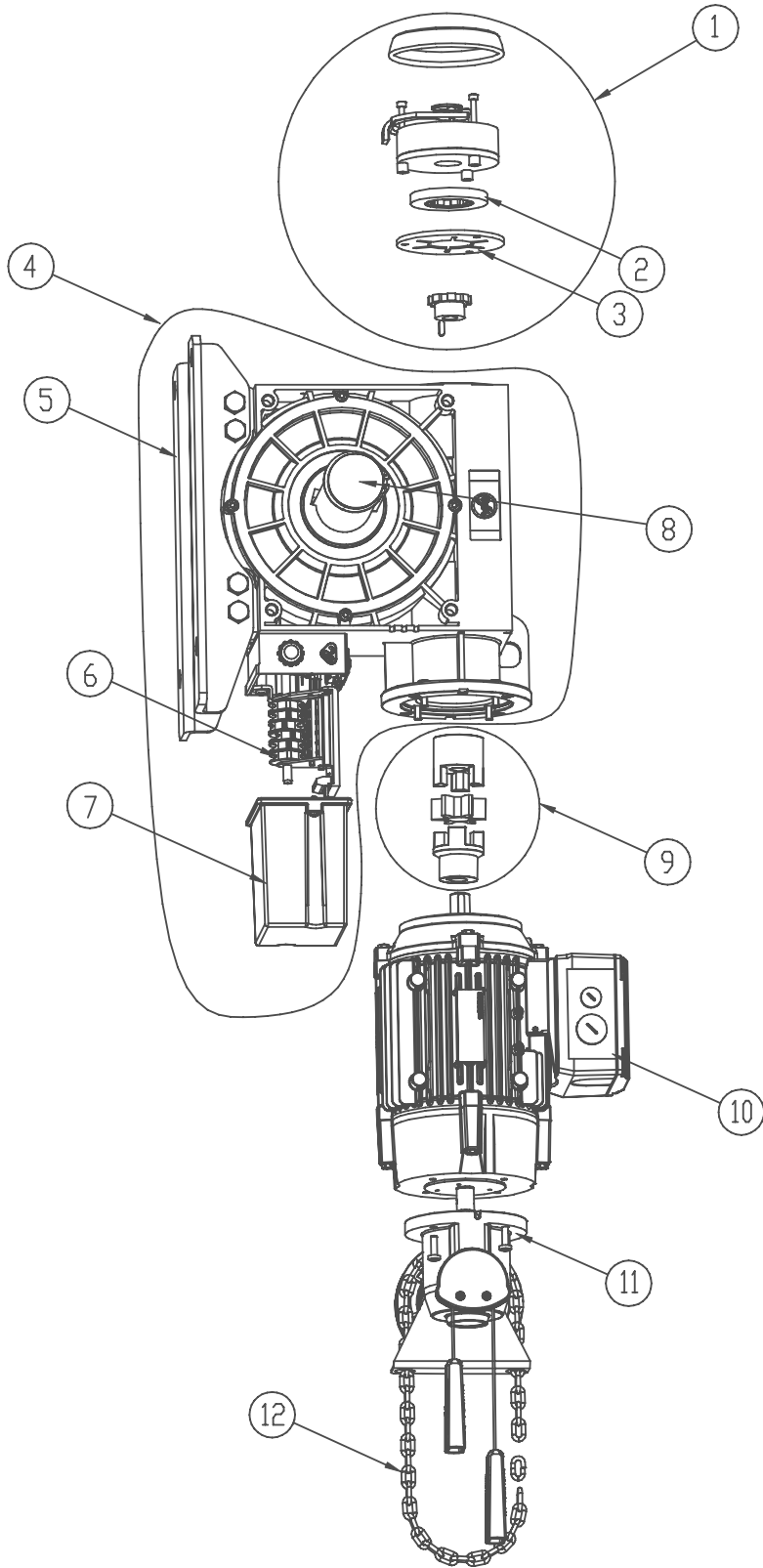
PARTS-MAN

Revision

0

Pos. Item	Description	Bemerkung Note	gültig ab ▶ gültig bis valid from ▶ valid to	Art.-Nr. Item-No	Delivery time class	Preis [€] Price [€]	1	Einheit Unit	Anzahl pro Tor Quantity per door	Verschleißteil part / Shtdetailje	Wear
XI	Drive unit (KE37) (2 spd, unbalanced, >12X12 to 16X16)										
	Drive unit, GFA, 2 SPEED, 220 VOLT, 370 NM		▶ 2003-09	6601T0012	A			Stck./pc.	1		
	Drive unit, GFA, 2 SPEED, 480 VOLT, 370 NM		▶ 2003-09	6601T0013	A			Stck./pc.	1		
	Drive unit, GFA, 2 SPEED, 600 VOLT, 370 NM		▶ 2003-09	6601T0014	A			Stck./pc.	1		
1	Brake assembly, GFA 9 NM, KE37		▶ 2003-09	6622T0010	A			Stck./pc.	1		
2	Friction disc, GFA, KE21, 29, & 37		▶ 2003-09	6626T0008	A			Stck./pc.	1		
3	Friction disc, Static, GFA, KE21, 29 & 37		▶ 2003-09	6626T0006	A			Stck./pc.	1		
4	Gearbox assembly, GFA, KE 37		▶ 2003-09	6610T0009	A			Stck./pc.	1		
5	Bracket, Gearbox mounting, KE 37 & 80		▶ 2003-09	6611T0003	A			Stck./pc.	1		
6	Switch, Limit, GFA		▶ 2003-09	6611T0007	A			Stck./pc.	1		
7	Cover, Limit switch, GFA		▶ 2003-09	6611T0008	A			Stck./pc.	1		
8	Shaft, Gearbox output, KE 37, & 80		▶ 2003-09	6611T0005	A			Stck./set	1		
9	Coupling assembly, GFA, KE 37 & 80		▶ 2003-09	6611T0009	A			Stck./pc.	1		
10	Motor, GFA, 2 speed, 2.7/0.67 Hp, 220V	220V	▶ 2003-09	6620T0010	A			Stck./pc.	1		
	Motor, GFA, 2 speed, 2.7/0.67 Hp, 480V	480V	▶ 2003-09	6620T0011	A			Stck./pc.			
	Motor, GFA, 2 speed, 2.7/0.67 Hp, 600V	600V	▶ 2003-09	6620T0012	A			Stck./pc.			
11	Hoist, Hand chain, GFA 1:4.5, without chain		▶ 2003-09	6625T0002	A			Stck./pc.	1		
12	Chain, Hand crank		▶ 2003-09	5105T0004	A			ft	1		

DRIVE UNIT ASSEMBLY,
FOR PART #'S 6601T0015, 6601T0016, & 6601T0017
1 SPEED, > 16' X 16' TO 24' X 27' UNBALANCED



Drawing number

PARTS-MAN

Revision

0

Pos. Item	Description	Bemerkung Note	gültig ab ► gültig bis valid from ► valid to	Art.-Nr. Item-No	Delivery time class	Preis [€] Price [€]	1	Einheit Unit	Anzahl pro Tor Quantity per door	Verschleißteil Wear part / Shtdetalje
XII	Drive unit (KE80) (1 spd, unbalanced, >16X16 to 24X27)									
	Drive unit, GFA, 1 SPEED, 220 VOLT, 800 NM		► 2003-09	6601T0015	A			Stck./pc.	1	
	Drive unit, GFA, 1 SPEED, 480 VOLT, 800 NM		► 2003-09	6601T0016	A			Stck./pc.	1	
	Drive unit, GFA, 1 SPEED, 600 VOLT, 800 NM		► 2003-09	6601T0017	A			Stck./pc.	1	
1	Brake assembly, GFA 20 NM, KE80		► 2003-09	6622T0011	A			Stck./pc.	1	
2	Friction disc, GFA, KE 80		► 2003-09	6626T0009	A			Stck./pc.	1	
3	Friction disc, Static, GFA, KE 80		► 2003-09	6626T0007	A			Stck./pc.	1	
4	Gearbox assembly, GFA, KE 80		► 2003-09	6610T0010	A			Stck./pc.	1	
5	Bracket, Gearbox mounting, KE 37 & 80		► 2003-09	6611T0003	A			Stck./pc.	1	
6	Switch, Limit, GFA		► 2003-09	6611T0007	A			Stck./pc.	1	
7	Cover, Limit switch, GFA		► 2003-09	6611T0008	A			Stck./set	1	
8	Shaft, Gearbox output, KE 37, & 80		► 2003-09	6611T0005	A			Stck./pc.	1	
9	Coupling assembly, GFA, KE 37 & 80		► 2003-09	6611T0009	A			Stck./pc.	1	
10	Motor, GFA, 1 speed, 3.35 Hp, 220V	220V	► 2003-09	6620T0013	A			Stck./pc.	1	
	Motor, GFA, 1 speed, 3.35 Hp, 480V	480V	► 2003-09	6620T0014	A			Stck./pc.		
	Motor, GFA, 1 speed, 3.35 Hp, 600V	600V	► 2003-09	6620T0015	A			Stck./pc.		
11	Hoist, Hand chain, GFA 1:4.5, without chain		► 2003-09	6625T0002	A			Stck./pc.	1	
12	Chain, Hand crank		► 2003-09	5105T0004	A			ft	1	

Pos. Item	Description	Bemerkung Note	gültig ab ▶ gültig bis valid from ▶ valid to	Art.-Nr. Item-No	Delivery time class	Preis [€] Price [€]	1	Einheit Unit	Anzahl pro Tor Quantity per door	Verschleißteil part / Sltidetalje	Wear
XIII Control Panel and Actuators											
1	Control Panel, ACS50 1 SPD 220/480/600V, CUL	1 Speed		4903T0001	B			Stck./pc.	1		
	Control Panel, ACS50 2 SPD 220/480/600V, CUL	2 Speed		4903T0002	B			Stck./pc.			
2	Photocell, ADS Thrubeam			8904R0002	A			Stck./pc.			
3	Photocell ADS Reflective			4904R0001	A			Stck./pc.			
4	ADS Photocell Reflector			4904R0008	A			Stck./pc.			
5	Pushbutton			96-7200-79	A			Stck./pc.			
6	Pull Switch			67-7003-99	A			Stck./pc.			
7	ADS, Motion detector			4904423	A			Stck./pc.			
8	ADS, Floor loop			4904R0035	A			Stck./pc.			
9	Radio Receiver			09-7395-85	A			Stck./pc.			
10	Radio Transmitter 4 button			67-7390-85	A			Stck./pc.			
11	Radio Transmitter 1 button			67-7392-93	A			Stck./pc.			

Pos. Item	Description	Bemerkung Note	gültig a valid from ▶ valid to	Art.-Nr. Item-No	Delivery time class	Preis [€] Price [€]	1	Einheit Unit	Anzahl pro Tor Quantity per door	Verschleißteil part / Slijtdeelje
XIV	Options									

Legend	
1	
S	No automatic price calculation
Ship time	
A	Within 24 hours
B	2-3 Workdays
C	5-8 Workdays
D	10-14 Workdays
Wear parts	
x	Standard wear with time/use

