



Dock Leveller PP Model

Spare Parts List

Fig. A Dek + Iip

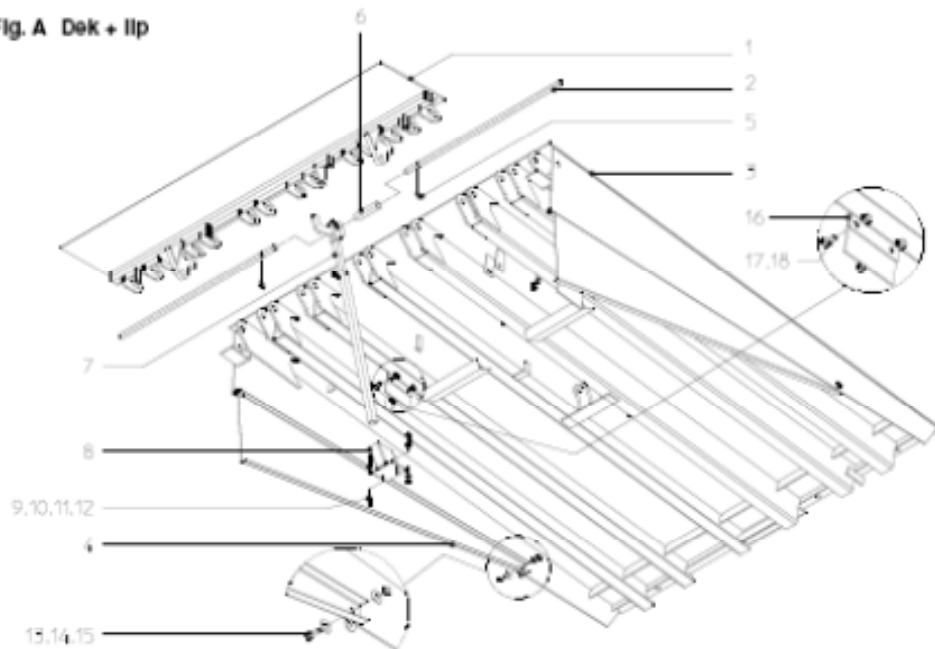


Fig. A Dek + lip

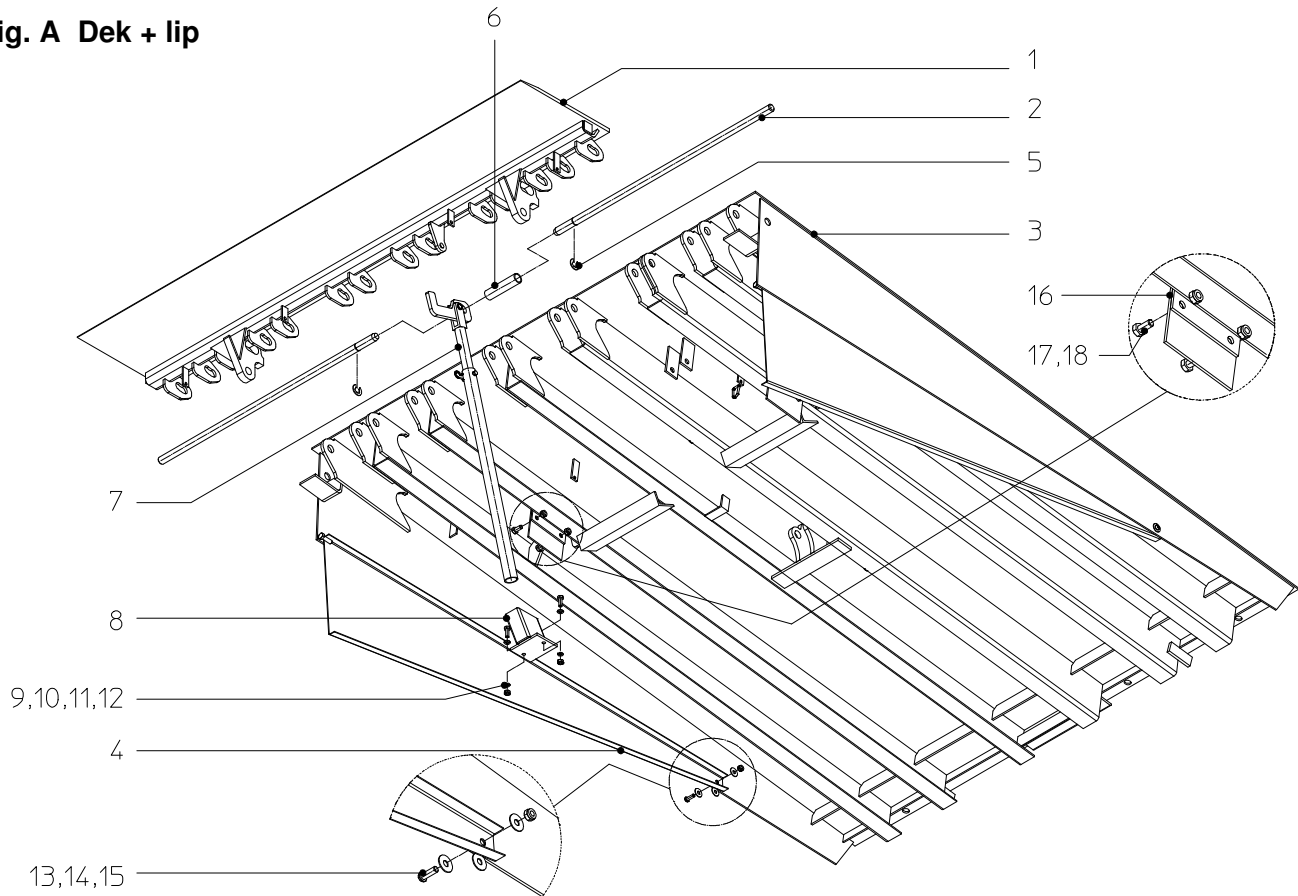


Table A-1 Lip Standard (1) (thread plate)

Width/Length	40	Lip rod (2)
PP ..18	06412300	06002002
PP ..20	06414300	06004002
PP ..21	06416300	06006002
PP ..22	06418300	06008002

Table A-2 Deck (3) (thread plate)

B/L	PP 20..	PP 22..	PP 25..	PP 28..	PP 30..	PP 35..	PP 40..	PP 45..
PP ..18	06402100	06412100	06422100	06432100	06442100	06452100	06462100	06472100
PP ..20	06404100	06414100	06424100	06434100	06444100	06454100	06464100	06474100
PP ..21	06406100	06416100	06426100	06436100	06446100	06456100	06466100	06476100
PP ..22	06408100	06418100	06428100	06438100	06448100	06458100	06468100	06478100

Table A-3 Sliding lamel (4)

PP 20..	PP 22..	PP 25..	PP 28..	PP 30..	PP 35..	PP 40..	PP 45..
06000215	06010030	06020030	06030030	06040030	06050030	06060030	06070030

Table A-4 Additional parts

Pos.	Reference	Description
5	65062036	Retaining ring
6	06000028	Spacer
7	06000020	Maintenance support
8	06000035	Bracket for maintenance support
9	65003407	Hex. screw
10	65050134	Hex. nut
11	65055019	Washer
12	65058028	Spring washer
13	65025007	Button head screw
14	65055712	Washer
15	65051034	Self locking nut
16	06412001	Stop plate
17	65003445	Hex. screw
18	65051036	Self locking nut

Fig. B Frame

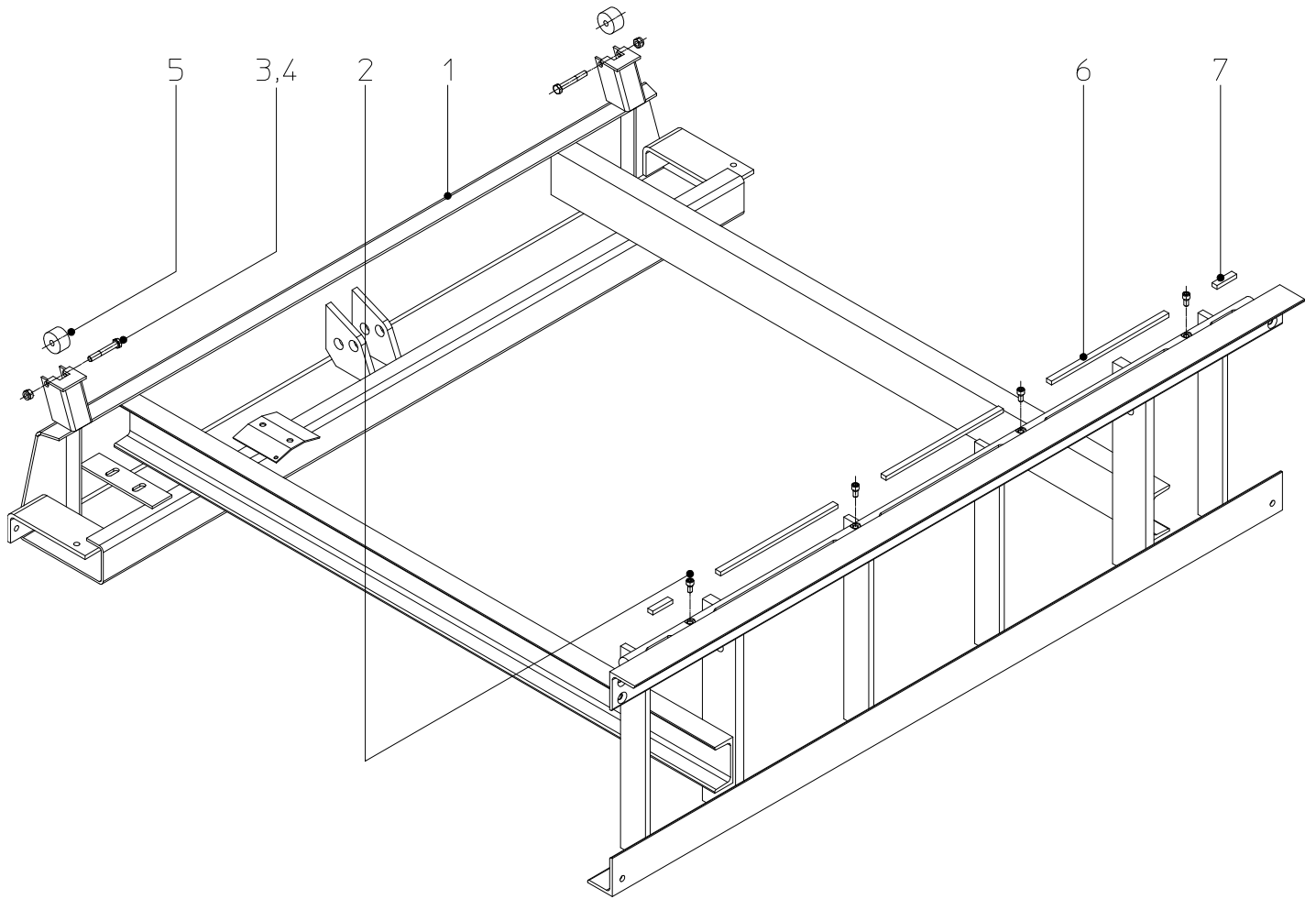


Table B-1 Subframe assembly (1)

	PP 20..	PP 22..	PP 25..	PP 28..	PP 30..	PP 35..	PP 40..	PP 45..
PP ..18	06502200	06512200	06522200	06532200	06542200	06520025	06562200	06572200
PP ..20	06504200	06514200	06524200	06534200	06544200	06554200	06564200	06574200
PP ..21	06506200	06516200	06526200	06536200	06546200	06556200	06566200	06576200
PP ..22	06508200	06518200	06528200	06538200	06548200	06558200	06568200	06578200

Table B-2 Additional parts

Pos.	Reference	Description
2	65012443	Socket head screw
3	65002457	Hex. head screw
4	65051036	Self locking nut
5	02400006	Guide roller
6	06400003	Shock absorbing strip
7	06404004	Shock absorbing strip PP ..20
	06406004	Shock absorbing strip PP ..21
	06408004	Shock absorbing strip PP ..22

Fig. C Hydraulic unit

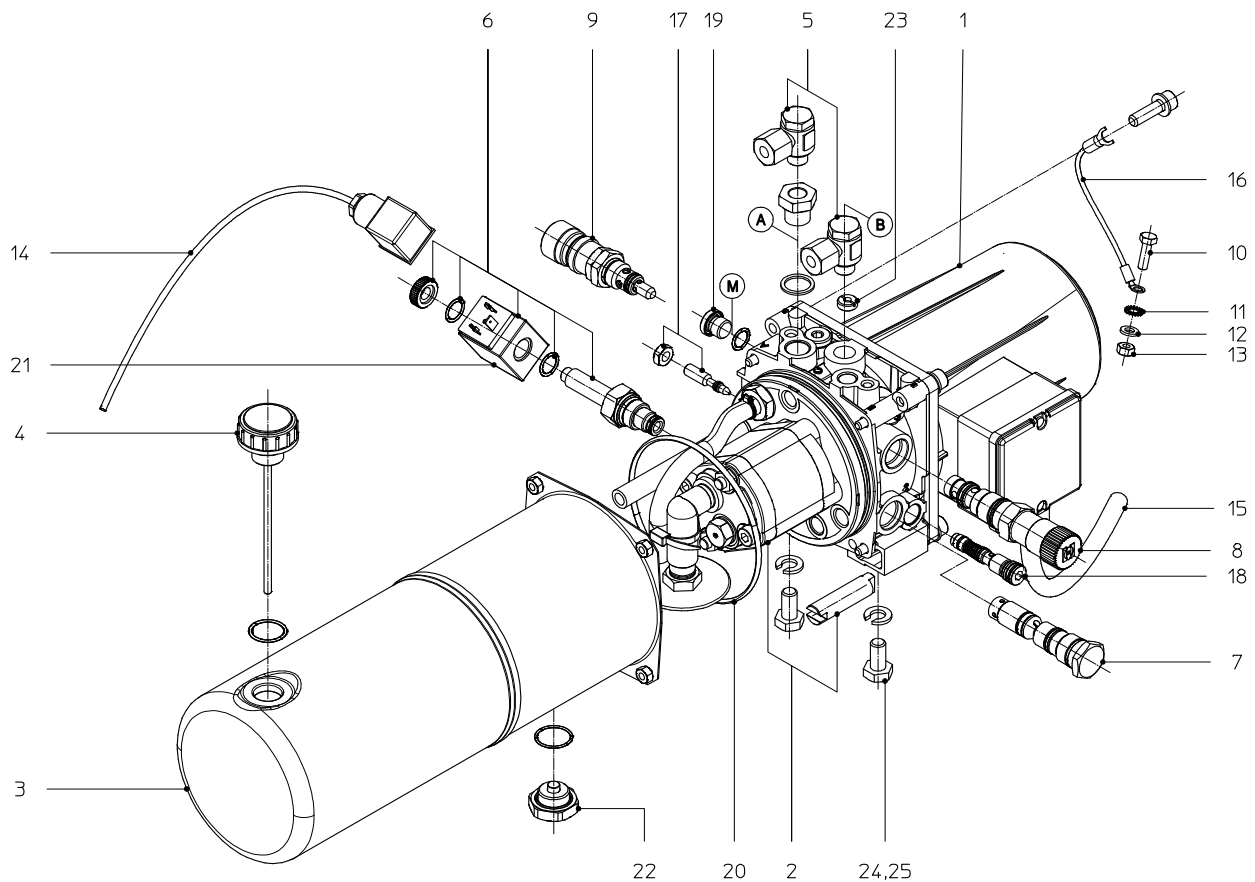


Table C-1 Hydraulic unit

Index	Reference	Description
	06000610	Hydraulic unit 3x230/400V 50Hz (excl. adaptor 5)
	06010610	Hydraulic unit 3x230/400V 60Hz (option)
	06020610	Hydraulic unit 3x200V 50Hz (option)
	06030610	Hydraulic unit 3x200V 60Hz (option)
1	02335611	Electric motor 3x230/400V 50Hz
2	06000612	Pump + coupling
3	02335613	Tank
4	02335614	Cap with dip stick
5	68702212	Adaptor
6	68308002	Stop valve (incl. coil) (See Fig. L 7)
7	02335666	Special valve (A-port) (See Fig. L 5)
8	02335667	Sequence valve (See Fig. L 3)
9	03700529	Pressure relief valve (See Fig. L 8)
10	65003287	Screw
11	1038.27.00.64	Toothed washer
12	65055015	Washer
13	65050128	Nut
14	02210021	Control cable
15	01810763	Power supply cable
16	02335602	Earth cable
17	-	Throttle (can not be dismantled) (See Fig. L 6)
18	02335670	Special valve (B-port) (See Fig. L 4)
19	06000621	Plug (M-port)
20	06000622	O-ring tank
21	69481501	Coil
22	-	Drain plug
23	-	Orifice (B-port)
24	65003403	Hex head screw
25	65055049	Washer

Fig. D Main cylinder

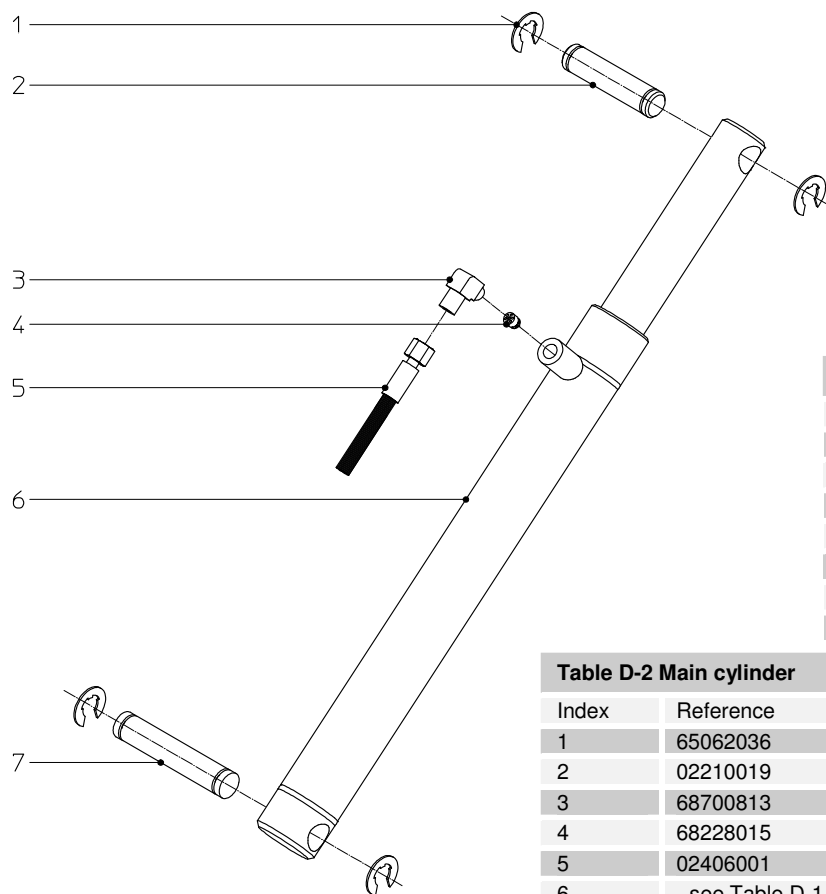


Table D-1 Main cylinders	
PP 20..	06000625
PP 22..	
PP 25..	06020625
PP 28..	06030625
PP 30..	
PP 35..	06050625
PP 40..	06060625
PP 45..	

Table D-2 Main cylinder		
Index	Reference	Description
1	65062036	Retaining ring
2	02210019	Hinge pin (deck side)
3	68700813	Adaptor
4	68228015	Safety valve
5	02406001	Hydr. hose main cylinder
6	- see Table D-1-	Main cylinder (incl. 3 and 4)
7	01510021	Hinge pin (frame side)

Fig. E Lip cylinder

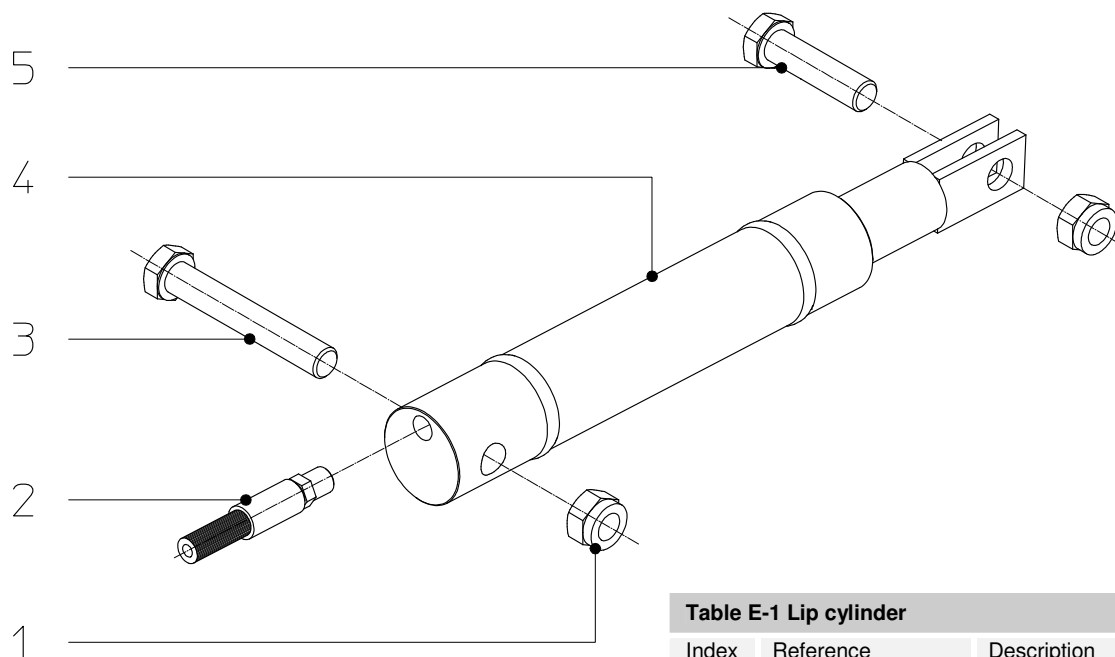


Table E-1 Lip cylinder		
Index	Reference	Description
1	65051040	Self locking nut
2	06000602	Hydr. hose lip cylinder
3	65002542	Hinge screw (deck side)
4	06000680	Lip cylinder
5	65002534	Hinge screw (lip side)

Fig. F Cross Traffic Legs (PP 20-30..)

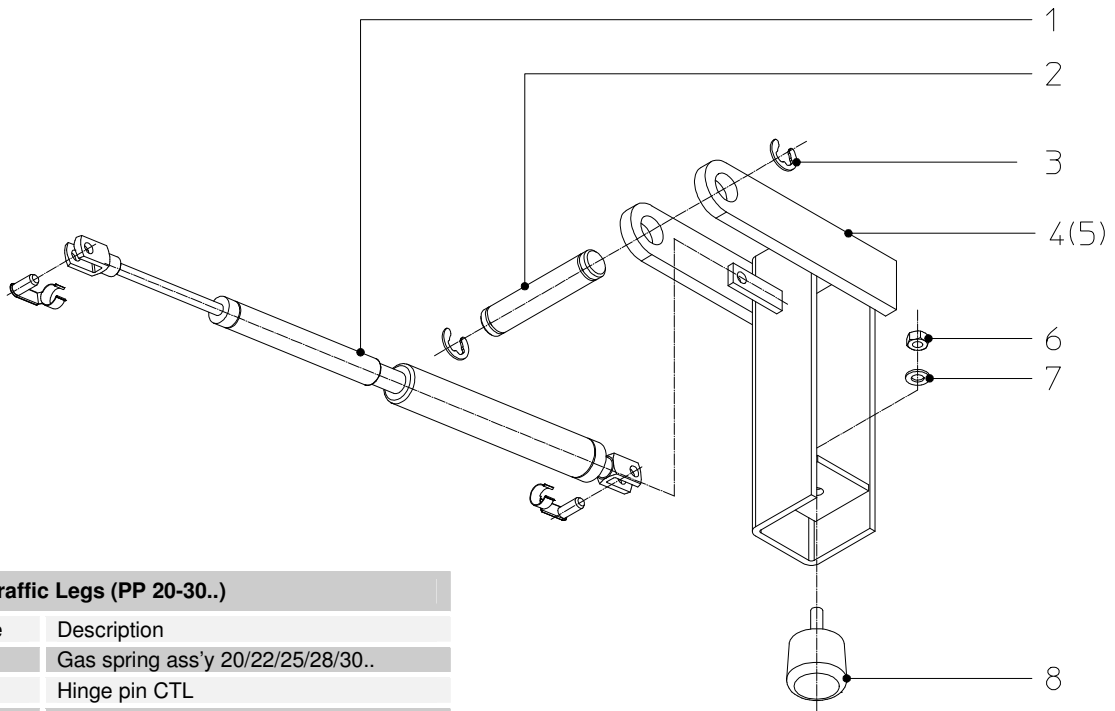


Table F-1 Cross Traffic Legs (PP 20-30..)

Index	Reference	Description
1	06400038	Gas spring ass'y 20/22/25/28/30..
2	06000001	Hinge pin CTL
3	65062030	Retaining ring
4	06000005	CTL Left
5	06000010	CTL Right
6	65050132	Hexagon nut
7	65055018	Washer
8	66201046	Rubber buffer CTL

Fig. G Cross Traffic Legs (PP 35/40/45..)

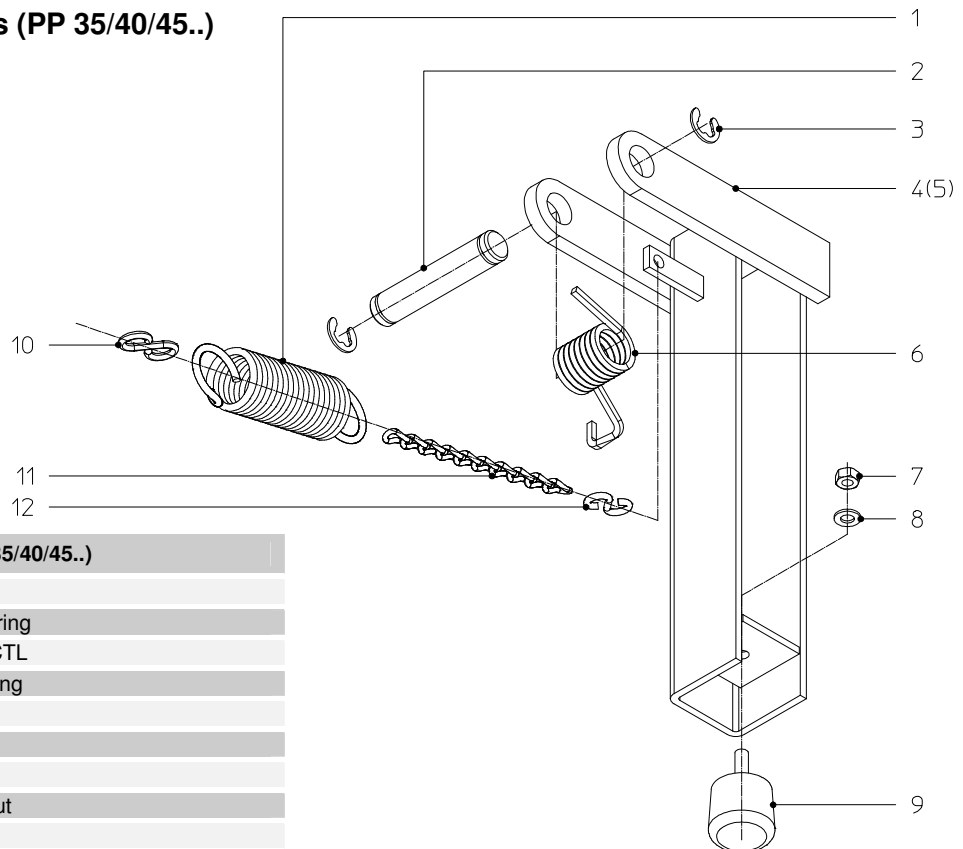


Table G-1 Cross Traffic Legs (PP 35/40/45..)

Index	Reference	Description
1	06000939	Tension spring
2	06000001	Hinge pin CTL
3	65062030	Retaining ring
4	06050005	CTL Left
5	06050010	CTL Right
6	06450039	CTL-spring
7	65050132	Hexagon nut
8	65055018	Washer
9	66201046	Rubber buffer CTL
10	00920542	S-hook
11	00920380	Chain (11 links)
12	00000182	S-hook

Fig. H Pull Bar

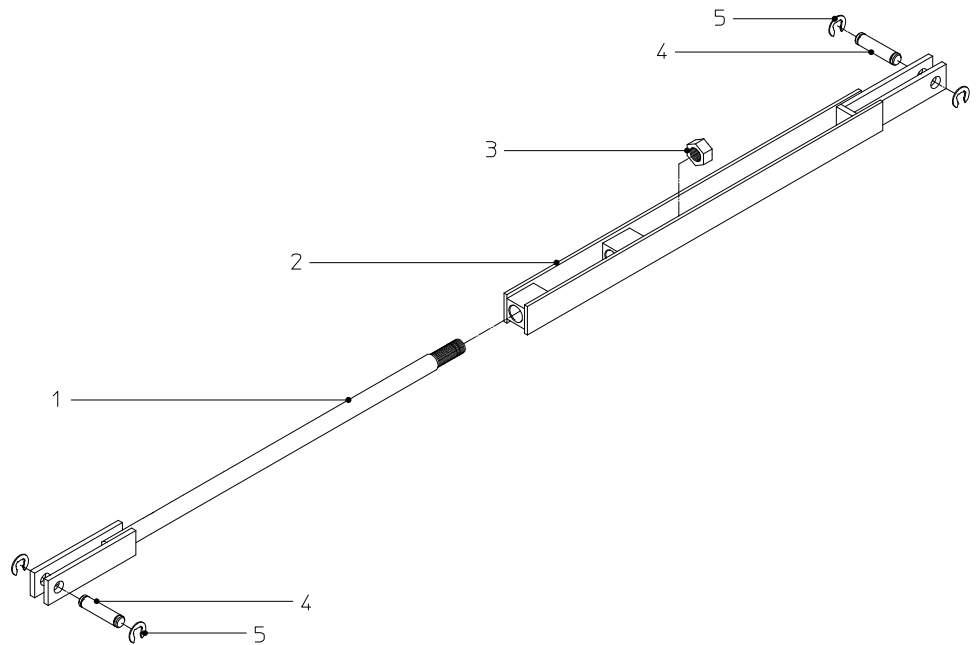


Table H-1 Pull bar

Index	Reference								Description
	PP 20..	PP22..	PP 25..	PP 28..	PP 30..	PP 35..	PP 40..	PP 45..	
	06400400	06410400	06420400	06430400	06440400	06450400	06460400	06470400	Pull bar ass'y *)
1	06400420	06410420	06420420	06430420	06440420	06450420	06460420	06470420	Rod
2	04630410	04630410	04630410	04630410	04630410	04630410	04630410	04630410	Clevis
3	65050912	65050912	65050912	65050912	65050912	65050912	65050912	65050912	Nut
4	02210019	02210019	02210019	02210019	02210019	02210019	02210019	02210019	Hinge pin
5	65062036	65062036	65062036	65062036	65062036	65062036	65062036	65062036	Retaining ring

* Excl. Index 4 & 5

Fig. I Tension gas spring

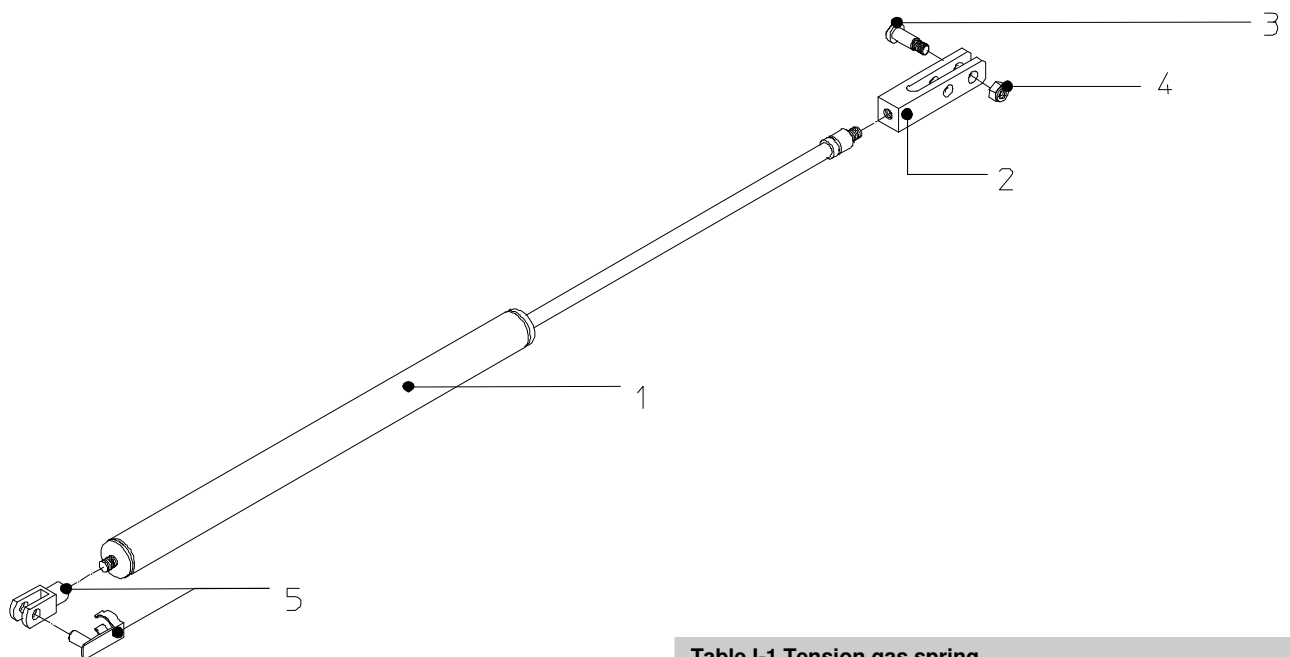


Table I-1 Tension gas spring

Index	Reference	Description
1	06400035	Gas spring ass'y (incl. 2 and 5)
2	04630076	Clevis
3	65025101	Bolt with shoulder
4	65205032	Self locking nut
5	60203003	Clevis with pin

Fig. J Control box

Table J-2 Control boxes

	400V	230V	200V
Standard	06000710	06000715	06020710
Door Switch	06000725	06000730	-

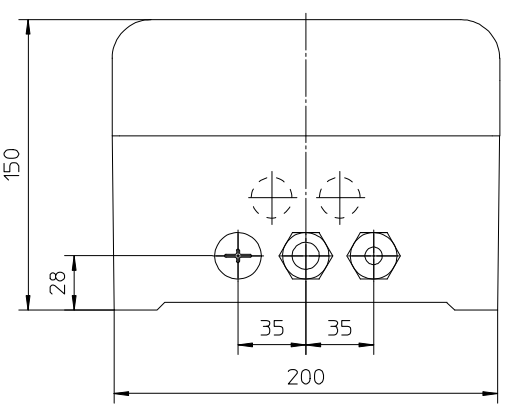
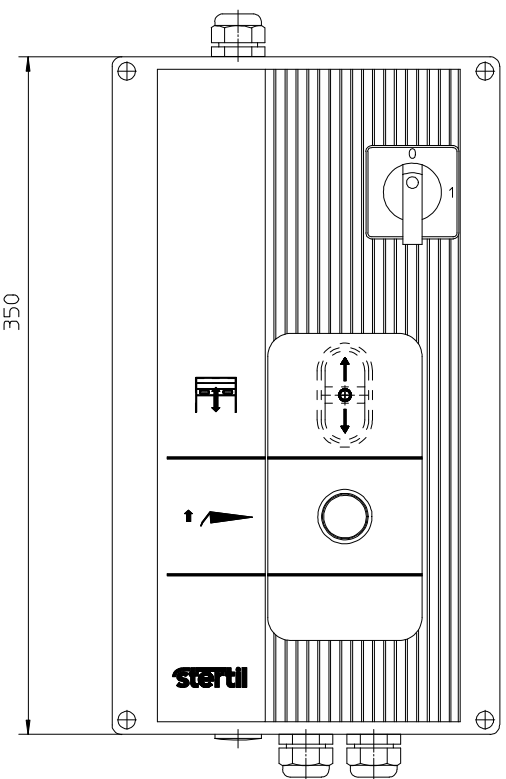
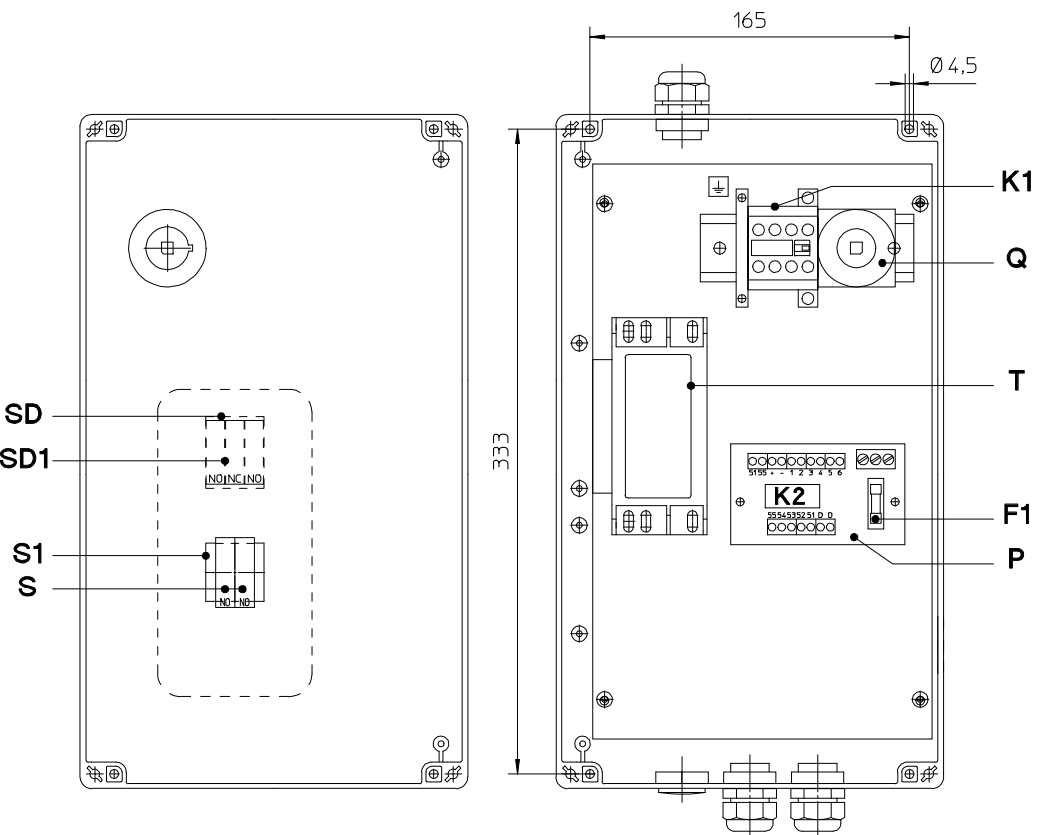


Table J-1 Control box					
Index	Reference	Description	Index	Reference	Description
P	69900120	Printed circuit board	Q	69120028	Main switch
S1	69141039	Push button	K1	01615652	Magnetic switch
S	69141014	Contact block	T	69500005	Transformer 400V
SD	69141090	Push button (optional)		69500006	Transformer 230V (optional)
SD1	69141091	Push button (optional)		69500011	Transformer 200V (optional)
SB1	69141122	Turn Switch (optional)	F1	69206006	Fuse 250mA slow
SB2	69141014	Contact block (optional)		69206007	Fuse 400mA slow (optional)
SB3	69141041	Contact block (optional)			