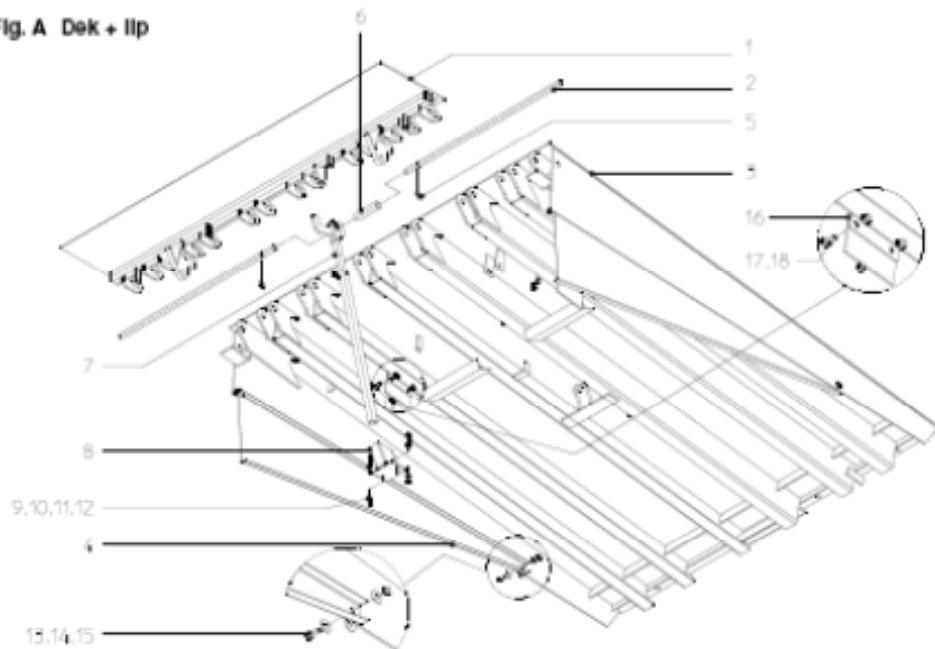




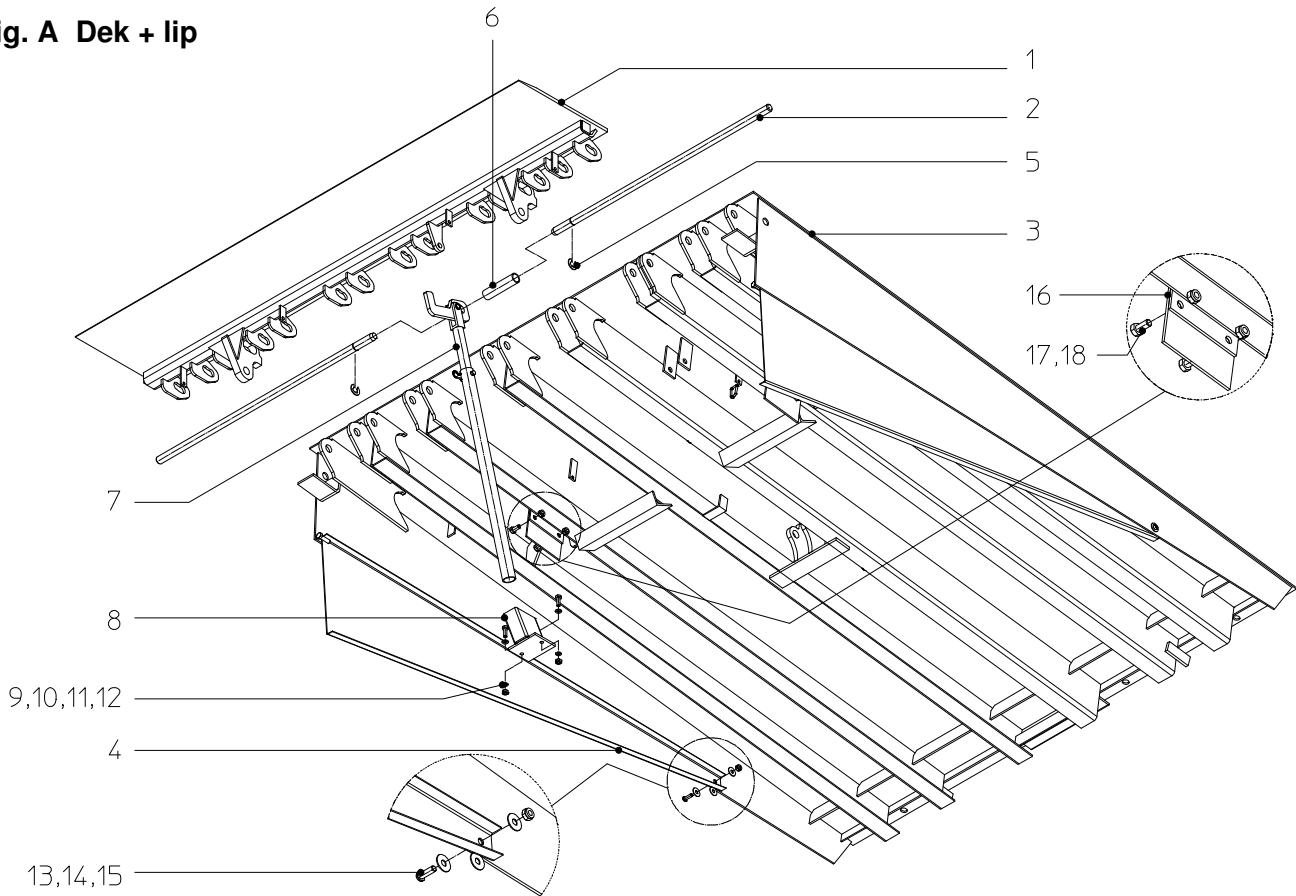
## Dock Leveller PF Model

### Spare Parts List

Fig. A Dek + Ijp



**Fig. A Dek + lip**



**Table A-1 Lips Standard (1) (thread plate)**

Width/Length	40	Lip rod (2)
PF ..18	06412300	06002002
PF ..20	06414300	06004002
PF ..21	06416300	06006002
PF ..22	06418300	06008002

**Table A-2 Deck (3) (thread plate)**

B/L	PF 20..	PF 22..	PF 25..	PF 28..	PF 30..	PF 35..	PF 40..	PF 45..
PF ..18	06402100	06412100	06422100	06432100	06442100	06452100	06462100	06472100
PF ..20	06404100	06414100	06424100	06434100	06444100	06454100	06464100	06474100
PF ..21	06406100	06416100	06426100	06436100	06446100	06456100	06466100	06476100
PF ..22	06408100	06418100	06428100	06438100	06448100	06458100	06468100	06478100

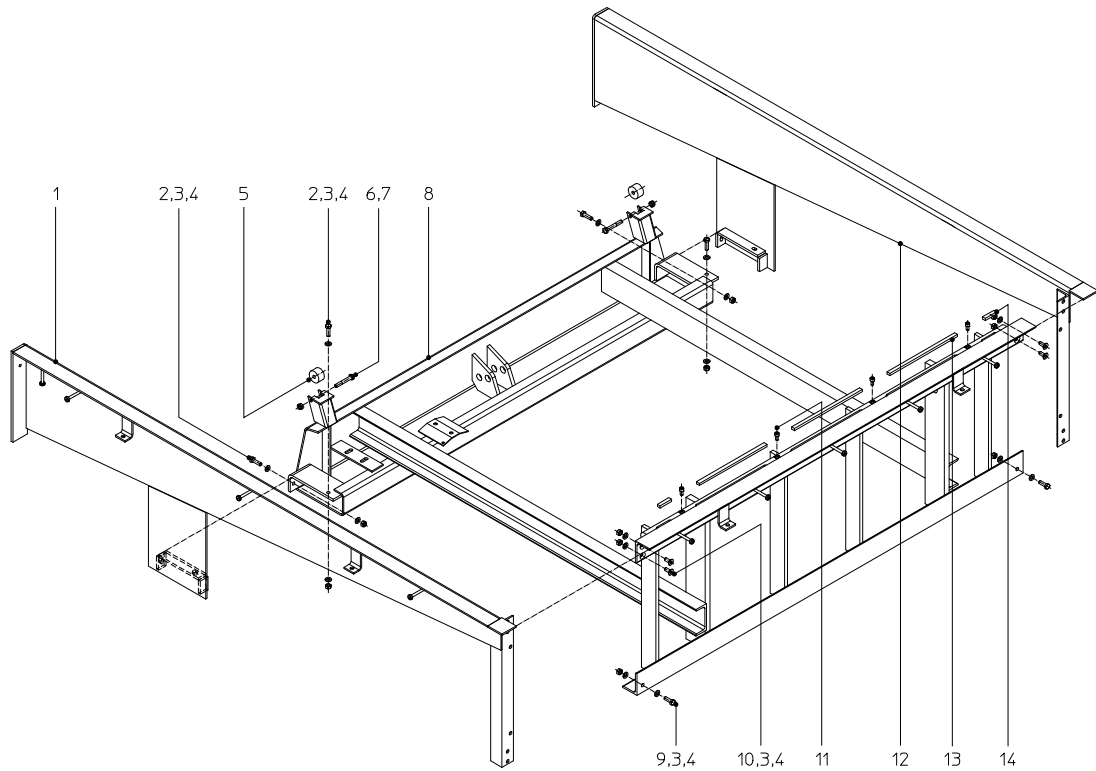
**Table A-3 Sliding lamel (4)**

PF 20..	PF 22..	PF 25..	PF 28..	PF 30..	PF 35..	PF 40..	PF 45..
06000215	06010030	06020030	06030030	06040030	06050030	06060030	06070030

**Table A-4 Additional parts**

Pos.	Reference	Description
5	65062036	Retaining ring
6	06000028	Spacer
7	06000020	Maintenance support
8	06000035	Bracket for maintenance support
9	65003407	Hex. screw
10	65050134	Hex. nut
11	65055019	Washer
12	65058028	Spring washer
13	65025007	Button head screw
14	65055712	Washer
15	65051034	Self locking nut
16	06412001	Stop plate
17	65003445	Hex. screw
18	65051036	Self locking nut

**Fig. B Frame**



**Table B-1 Side panel L/R**

	PF 20..	PF 22..	PF 25..	PF 28..	PF 30..	PF 35..	PF 40..	PF 45..
Conventional R (1)	06400215	06410215	06420215	06430215	06440215	06050215	06060215	06070215
QMS R (1)	06400515	06410515	06420515	06430515	06440515	06050515	06060515	06070515
Conventional L (12)	06400210	06410210	06420210	06430210	06440210	06050210	06060210	06070210
QMS L (12)	06400510	06410510	06420510	06430510	06440510	06050510	06060510	06070510

**Table B-2 Subframe assembly Conventional (8)**

	PF 20..	PF 22..	PF 25..	PF 28..	PF 30..	PF 35..	PF 40..	PF 45..
PF ..18	06402200	06412200	06422200	06432200	06442200	06452200	06462200	06472200
PF ..20	06404200	06414200	06424200	06434200	06444200	06454200	06464200	06474200
PF ..21	06406200	06416200	06426200	06436200	06446200	06456200	06466200	06476200
PF ..22	06408200	06418200	06428200	06438200	06448200	06458200	06468200	06478200

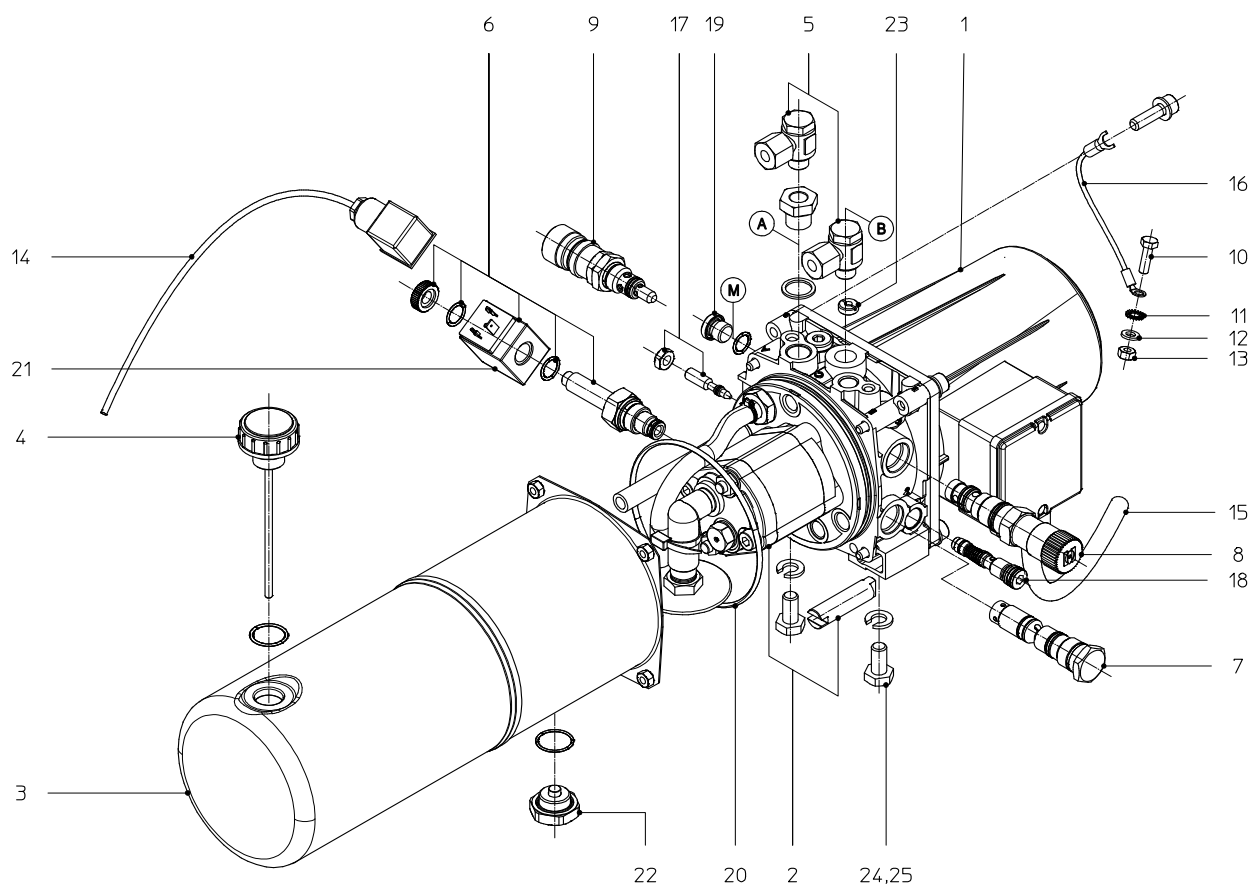
**Table B-3 Subframe assembly QMS (8)**

	PF 20..	PF 22..	PF 25..	PF 28..	PF 30..	PF 35..	PF 40..	PF 45..
PF ..18	06402525	06412525	06422525	06432525	06442525	06452525	06462525	06472525
PF ..20	06404525	06414525	06424525	06434525	06444525	06454525	06464525	06474525
PF ..21	06406525	06416525	06426525	06436525	06446525	06456525	06466525	06476525
PF ..22	06408525	06418525	06428525	06438525	06448525	06458525	06468525	06478525

**Table B-4 Additional parts**

Pos.	Reference	Description
2	65003449	Hex. Head screw
3	65055021	Washer
4	65050136	Hex. nut
5	02400006	Guide roller
6	65051036	Self locking nut
7	65002457	Hex. head screw
9	65003448	Hex. head screw
10	65025057	Countersunk head screw
11	65012443	Socket head screw
13	06400003	Shock absorbing strip
14	06404004	Shock absorbing strip PF ..20
	06406004	Shock absorbing strip PF ..21
	06408004	Shock absorbing strip PF ..22

**Fig. C Hydraulic unit**



**Table C-1 Hydraulic unit**

Index	Reference	Description
	06000610	Hydraulic unit 3x230/400V 50Hz (excl. adaptor 5)
	06010610	Hydraulic unit 3x230/400V 60Hz (option)
	06020610	Hydraulic unit 3x200V 50Hz (option)
	06030610	Hydraulic unit 3x200V 60Hz (option)
1	02335611	Electric motor 3x230/400V 50Hz
2	06000612	Pump + coupling
3	02335613	Tank
4	02335614	Cap with dip stick
5	68702212	Adaptor
6	68308002	Stop valve (incl. coil) (See Fig. L 7)
7	02335666	Special valve (A-port) (See Fig. L 5)
8	02335667	Sequence valve (See Fig. L 3)
9	03700529	Pressure relief valve (See Fig. L 8)
10	65003287	Screw
11	1038.27.00.64	Toothed washer
12	65055015	Washer
13	65050128	Nut
14	02210021	Control cable
15	01810763	Power supply cable
16	02335602	Earth cable
17	-	Throttle (can not be dismantled) (See Fig. L 6)
18	02335670	Special valve (B-port) (See Fig. L 4)
19	06000621	Plug (M-port)
20	06000622	O-ring tank
21	69481501	Coil
22	-	Drain plug
23	-	Orifice (B-port)
24	65003403	Hex head screw
25	65055049	Washer

**Fig. D Main cylinder**

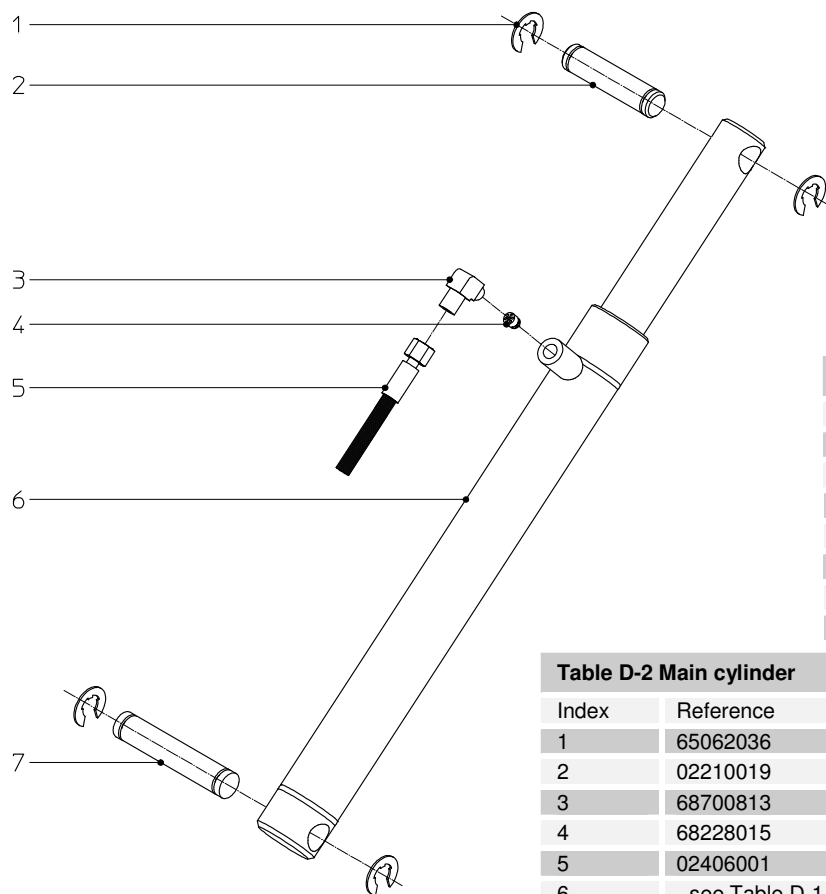


Table D-1 Main cylinders	
PF 20..	06010625
PF 22..	06020625
PF 25..	06030625
PF 28..	06430625
PF 30..	
PF 35..	06050625
PF 40..	
PF 45..	06060625

Table D-2 Main cylinder		
Index	Reference	Description
1	65062036	Retaining ring
2	02210019	Hinge pin (deck side)
3	68700813	Adaptor
4	68228015	Safety valve
5	02406001	Hydr. hose main cylinder
6	- see Table D-1-	Main cylinder (incl. 3 and 4)
7	01510021	Hinge pin (frame side)

**Fig. E Lip cylinder**

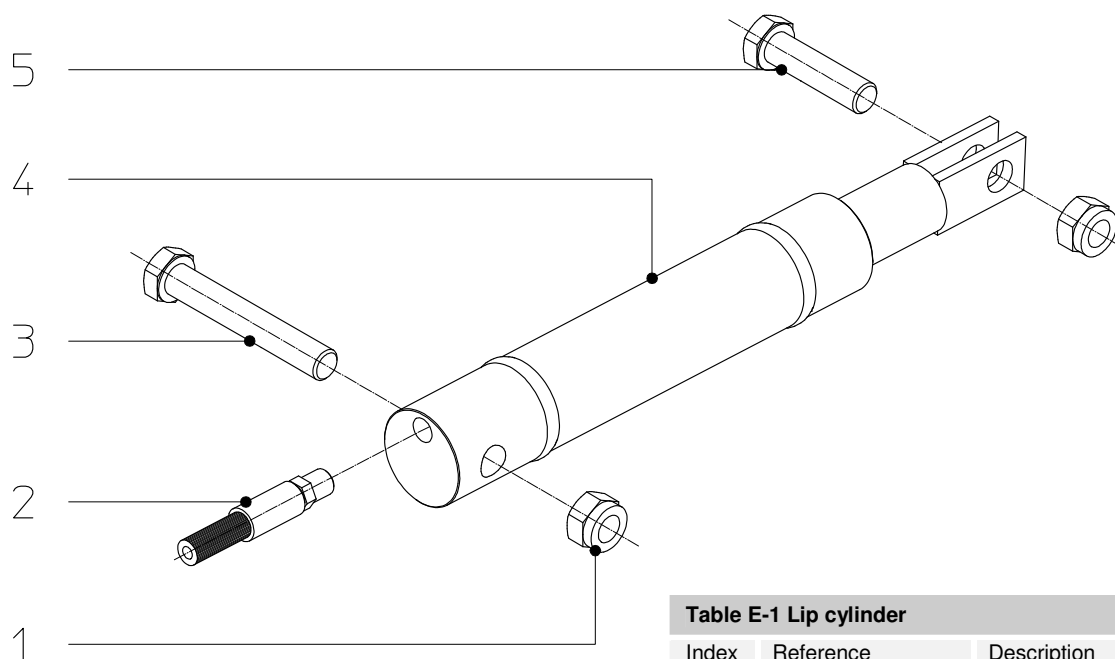
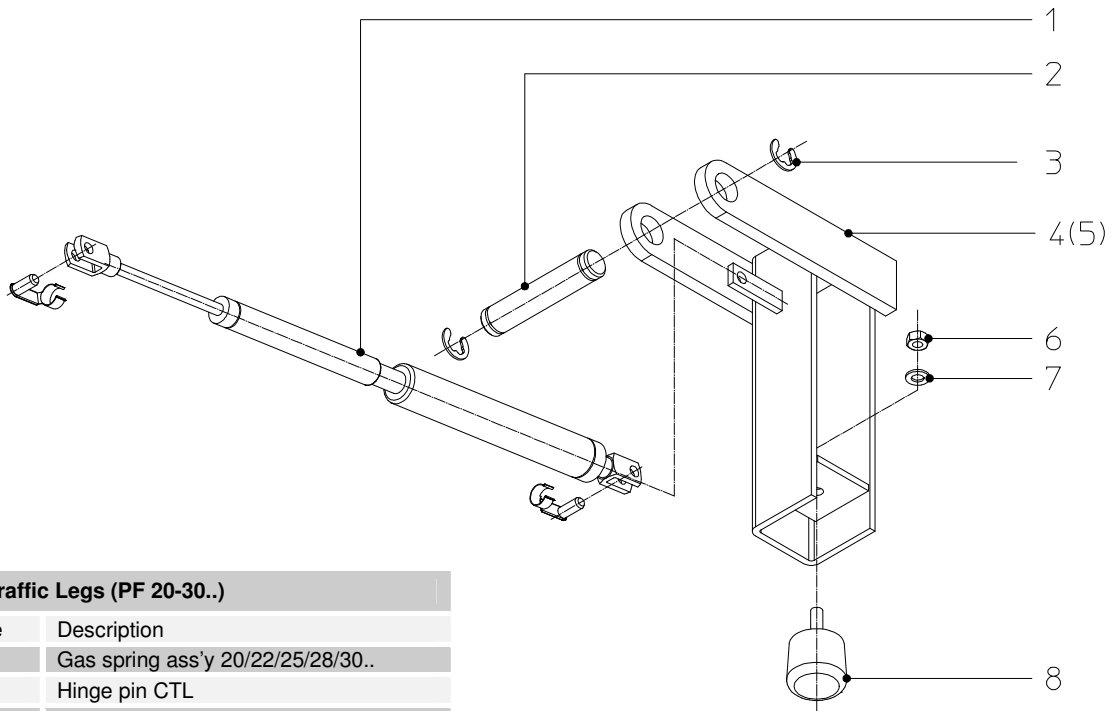


Table E-1 Lip cylinder		
Index	Reference	Description
1	65051040	Self locking nut
2	06000602	Hydr. hose lip cylinder
3	65002542	Hinge screw (deck side)
4	06000680	Lip cylinder
5	65002534	Hinge screw (lip side)

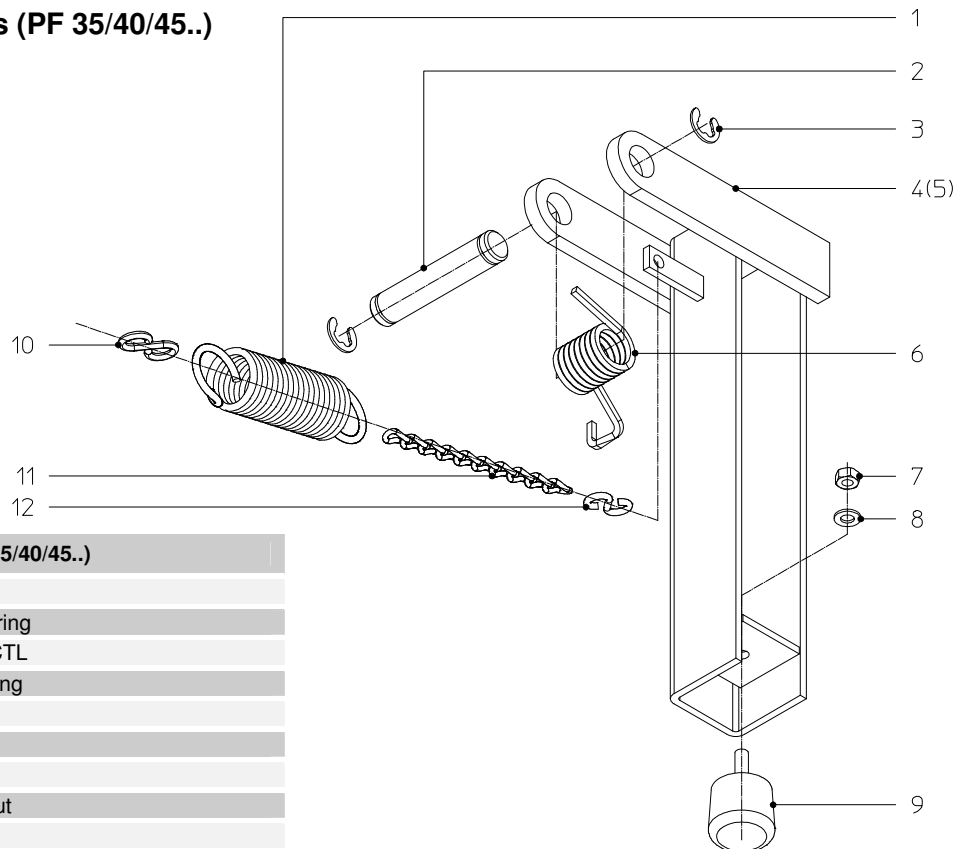
**Fig. F Cross Traffic Legs (PF 20-30..)**



**Table F-1 Cross Traffic Legs (PF 20-30..)**

Index	Reference	Description
1	06400038	Gas spring ass'y 20/22/25/28/30..
2	06000001	Hinge pin CTL
3	65062030	Retaining ring
4	06050005	CTL Left
5	06050010	CTL Right
6	65050132	Hexagon nut
7	65055018	Washer
8	66201046	Rubber buffer CTL

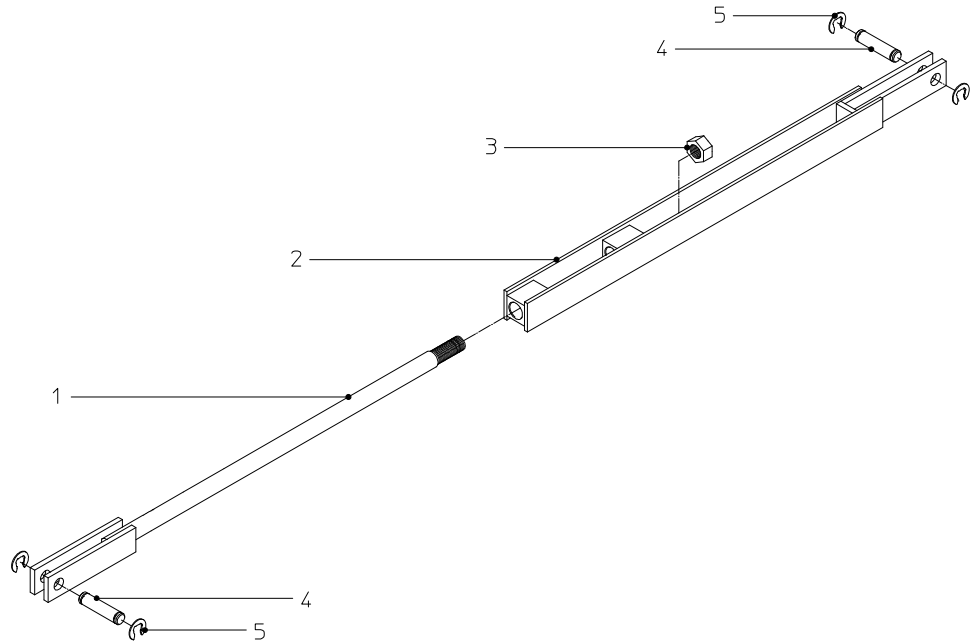
**Fig. G Cross Traffic Legs (PF 35/40/45..)**



**Table G-1 Cross Traffic Legs (PF 35/40/45..)**

Index	Reference	Description
1	06000939	Tension spring
2	06000001	Hinge pin CTL
3	65062030	Retaining ring
4	06050005	CTL Left
5	06050010	CTL Right
6	06450039	CTL-spring
7	65050132	Hexagon nut
8	65055018	Washer
9	66201046	Rubber buffer CTL
10	00920542	S-hook
11	00920380	Chain (11 links)
12	00000182	S-hook

**Fig. H Pull Bar**

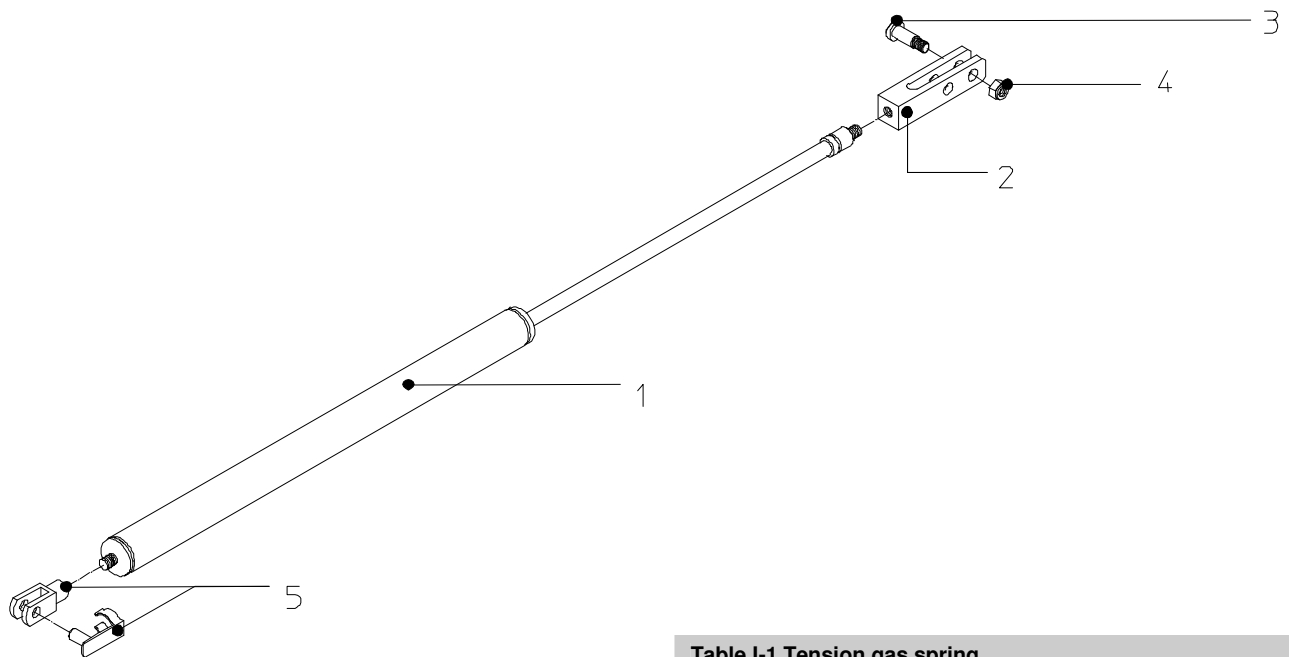


**Table H-1 Pull bar**

Index	Reference								Description
	PF 20..	PF22..	PF 25..	PF 28..	PF 30..	PF 35..	PF 40..	PF 45..	
	06400400	06410400	06420400	06430400	06440400	06450400	06460400	06470400	Pull bar ass'y *)
1	06400420	06410420	06420420	06430420	06440420	06450420	06460420	06470420	Rod
2	04630410	04630410	04630410	04630410	04630410	04630410	04630410	04630410	Clevis
3	65050912	65050912	65050912	65050912	65050912	65050912	65050912	65050912	Nut
4	02210019	02210019	02210019	02210019	02210019	02210019	02210019	02210019	Hinge pin
5	65062036	65062036	65062036	65062036	65062036	65062036	65062036	65062036	Retaining ring

\* Excl. Index 4 & 5

**Fig. I Tension gas spring**



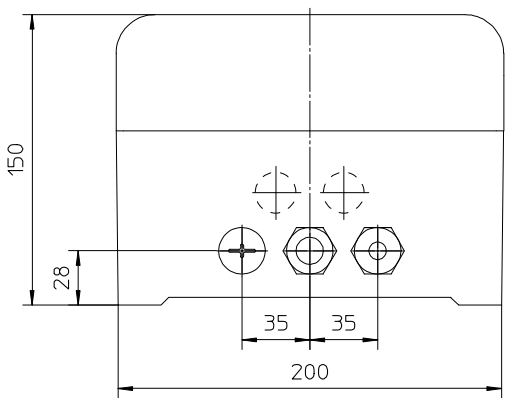
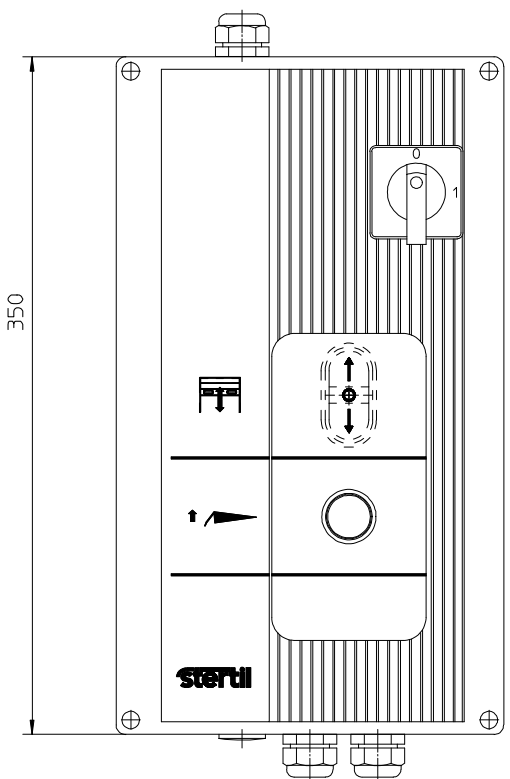
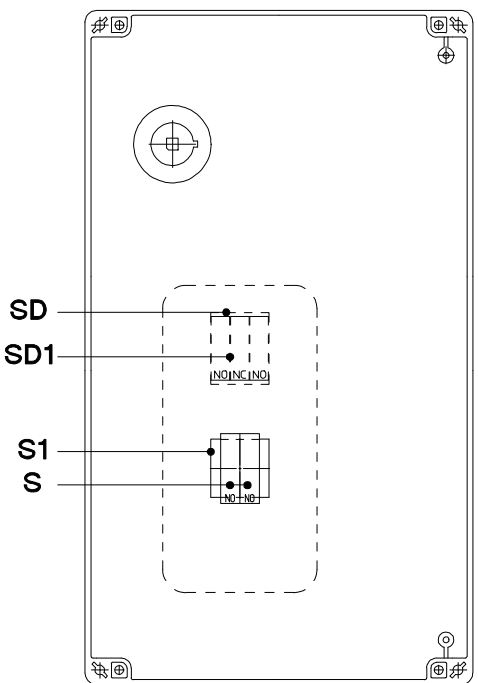
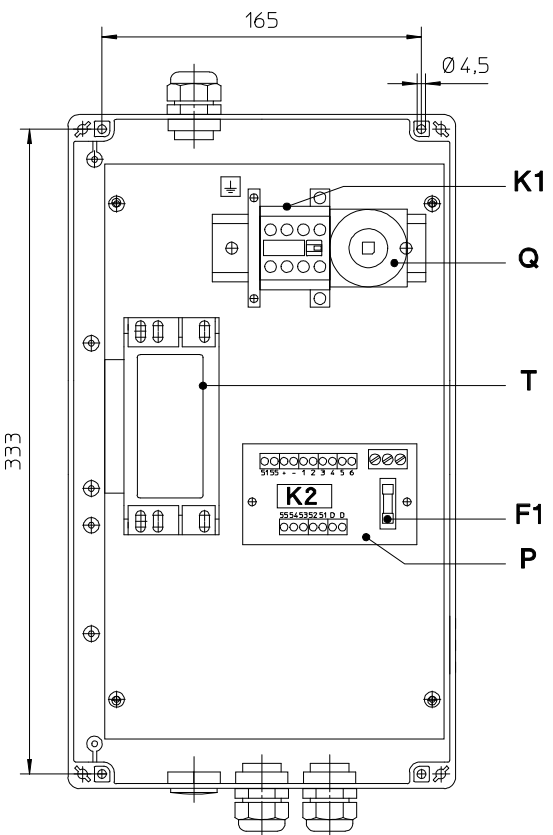
**Table I-1 Tension gas spring**

Index	Reference	Description
1	06400035	Gas spring ass'y (incl. 2 and 5)
2	04630076	Clevis
3	65025101	Bolt with shoulder
4	65205032	Self locking nut
5	60203003	Clevis with pin

**Fig. J Control box**

**Table J-2 Control boxes**

	400V	230V	200V
Standard	06000710	06000715	06020710
Door Switch	06000725	06000730	-



**Table J-1 Control box**

Index	Reference	Description	Index	Reference	Description
P	69900120	Printed circuit board	Q	69120028	Main switch
S1	69141039	Push button	K1	01615652	Magnetic switch
S	69141014	Contact block	T	69500005	Transformer 400V
SD	69141090	Push button (optional)		69500006	Transformer 230V (optional)
SD1	69141091	Push button (optional)		69500011	Transformer 200V (optional)
SB1	69141122	Turn Switch (optional)	F1	69206006	Fuse 250mA slow
SB2	69141014	Contact block (optional)		69206007	Fuse 400mA slow (optional)
SB3	69141041	Contact block (optional)			