



# sterdil®

## Combilok Spare Parts List

STERTIL B.V.  
WESTKERN 3  
9288 CA KOOTSTERTILLE, NL

**FIG. A ASSEMBLY COMBILOK**

INDEX	REFERENCE	DESCRIPTION	INDEX	REFERENCE	DESCRIPTION
1	Right model 03-714-000	Assembly cross-head (see FIG. B)	36	Right model 65-050-136	Hex. nut M12 DIN 934
2	Left model 03-719-100	Channel beam	37	1037.86.05.04	Selflocking nut M4
3	03-710-022	Conduit	38	65-012-285	Hex. socket head cap screw M6 x 16
4	03-705-031	Conduit	39	65-055-204	Washer M6
5	03-705-032	Sliding plug	40	1035.31.74.02	Hex. bolt M4 x 40
6	03-700-041	Sliding plate	41	03-710-091	Shim 8 mm (foot plate)
7	03-700-043	Cylinder "A" (see FIG. C)	42	03-710-093	Shim 4 mm (foot plate)
8	03-705-575	Elbow assembly	43	03-710-092	Shim 10 mm (rail)
9	03-701-000	Longitudinal guide		03-710-094	Shim 4 mm (rail)
10	03-707-000	Cover		03-710-045	Cable channel
11	03-710-100	Rail			
12	03-705-200	Sliding pipe			
15	03-713-000	Plate			
20	03-700-025	Cable tread			
21	66-201-058	Washer M12 DIN 125A			
22	65-055-021	Hex. socket screw M6 x 16 ISO 7380-8.8			
23	1036.30.06.16	Hex. nut M24 DIN 6924			
24	65-051-048	Washer M24 DIN 125A St			
25	1038.06.02.70	Hex. bolt M16 X 35 DIN 933-8.8			
26	65-003-529	Washer M16 DIN 125A St			
27	65-055-216	Hex. bolt M20 x 90 DIN 931-8.8			
28	65-002-617	Hex. nut M20 DIN 985			
29	65-051-044	Hex. bolt M6 x 20 DIN 933-8.8			
30	65-003-287	Special nut M6			
31	65-052-914	Pipe clamp			
32	66-101-255	Anchor bolt UPAT EXA 16/10 GV2			
33	65-016-003	Hex. nut M6 DIN 934			
34	65-050-128	Spring washer M6 DIN 127			
35	65-058-018	Hex. bolt M12 x 35 DIN 933			

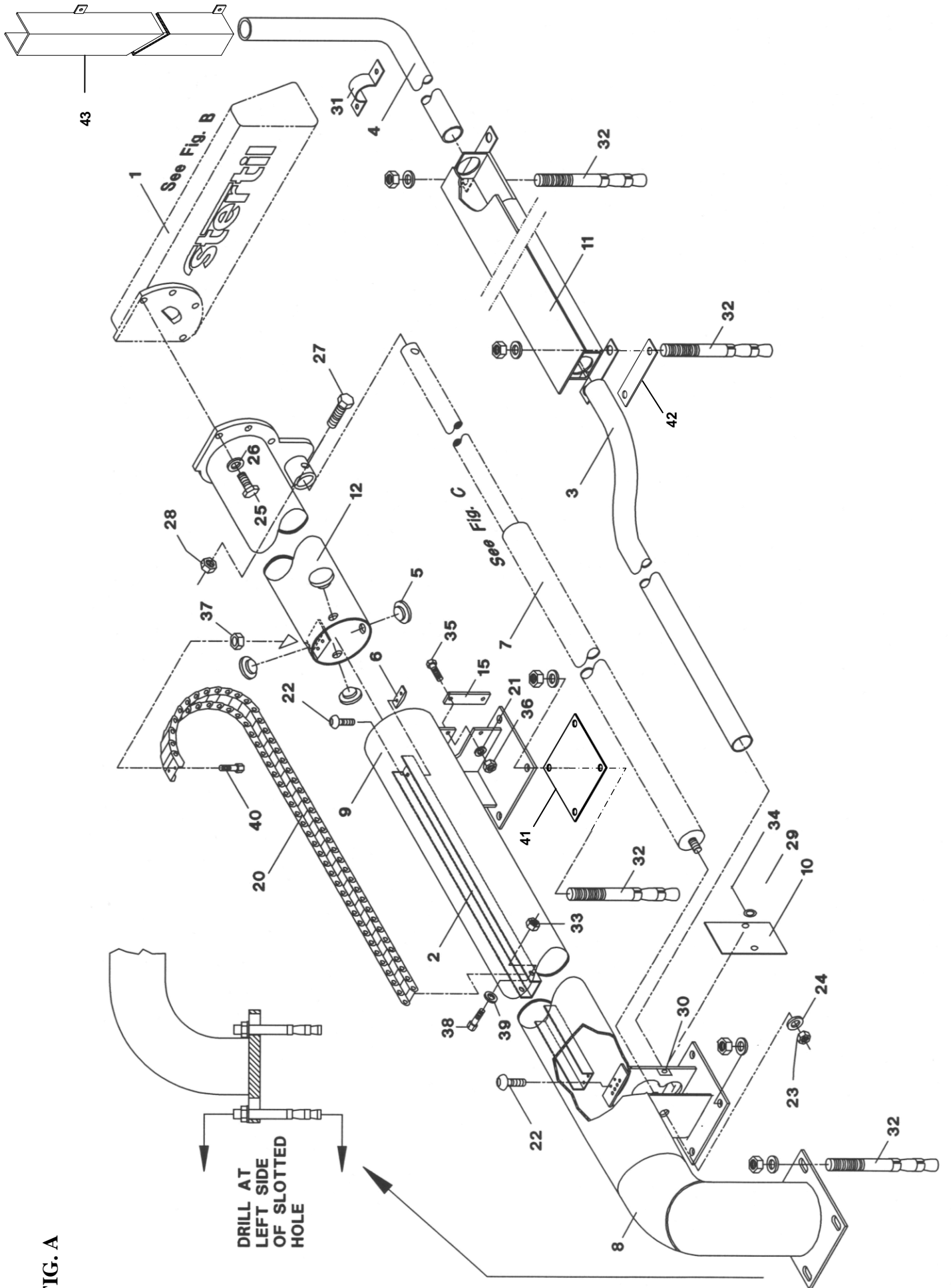
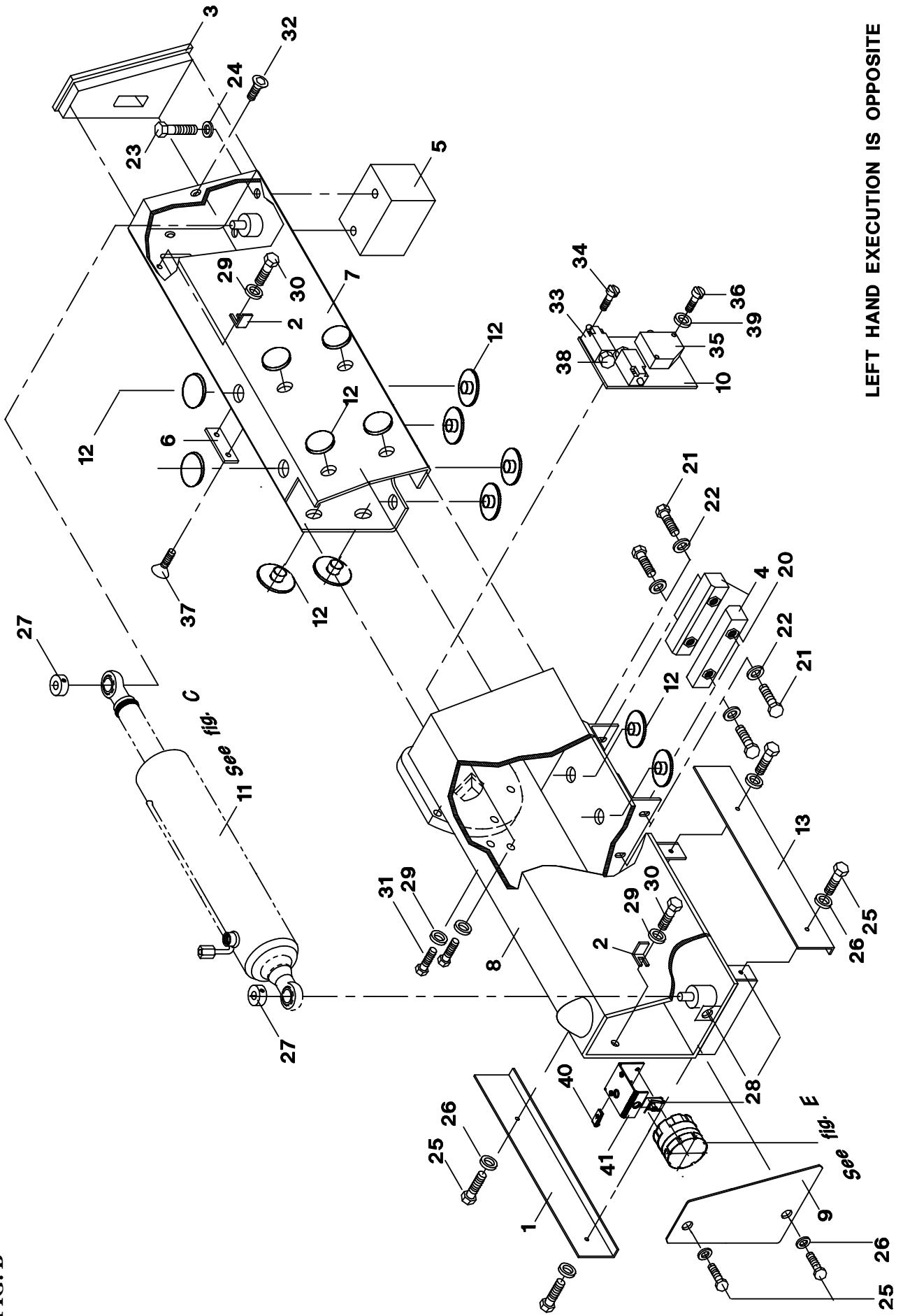


FIG. A

**FIG. B ASSEMBLY CROSS-HEAD**

INDEX	REFERENCE	DESCRIPTION
	Right model	
	Left model	
1	03-704-022	Foot protector
2	03-704-023	Switching device
3	03-704-215	Plate-HMPE
4	03-704-044	Plate-HMPE assembly
5	03-704-216	Plate-HMPE
6	03-704-046	Wear plate
7	03-714-200	Sliding beam
8	03-714-100	Cross guide
9	03-714-125	Cover
10	03-714-150	Switch bracket
11	03-700-550	Cylinder "B" (See FIG. C)
12	02-400-002	Wear plate
13	03-704-024	Foot protector
14	1036.23.03.53	Screw M5 x 20
20	65-052-900	Nut M10 H = 3 x D
21	65-003-407	Hex. bolt M10 x 30 DIN 933-8.8
22	65-055-210	Washer M10 DIN 125A
23	1035.38.07.79	Hex. bolt M16 x 50 DIN 933-8.8
24	65-055-216	Washer M16 DIN 125A St
25	1035.38.04.13	Hex. bolt M6 x 12 DIN 933-8.8
26	65-055-204	Washer M6 DIN 125A St
27	1039.80.00.15	Collar Ø15 DIN 705A St.
28	65-052-914	Special nut M6
29	65-055-208	Washer M8 DIN 125A St
30	65-003-359	Hex. bolt M8 x 12 DIN 933-8.8
31	65-003-363	Hex. bolt M8 x 20 DIN 933-8.8
32	65-025-066	Hex. socket countersunc screw M8 x 20 DIN 7991-8.8
33	1002.17.53.04	Limit switch
34	65-030-226	Slotted screw M4 x 25 DIN 84
35	69-205-005	Sensor
36	65-030-257	Bolt M5 x 30 DIN 84
37	65-025-053	Screw M8 x 10 DIN 7991
38	1002.15.00.56	Turnbuckle
39	65-005-014	Washer M5 DIN 125-A
40	1002.11.00.32	Special nut M5
41	03-710-631	Bracket

FIG. B

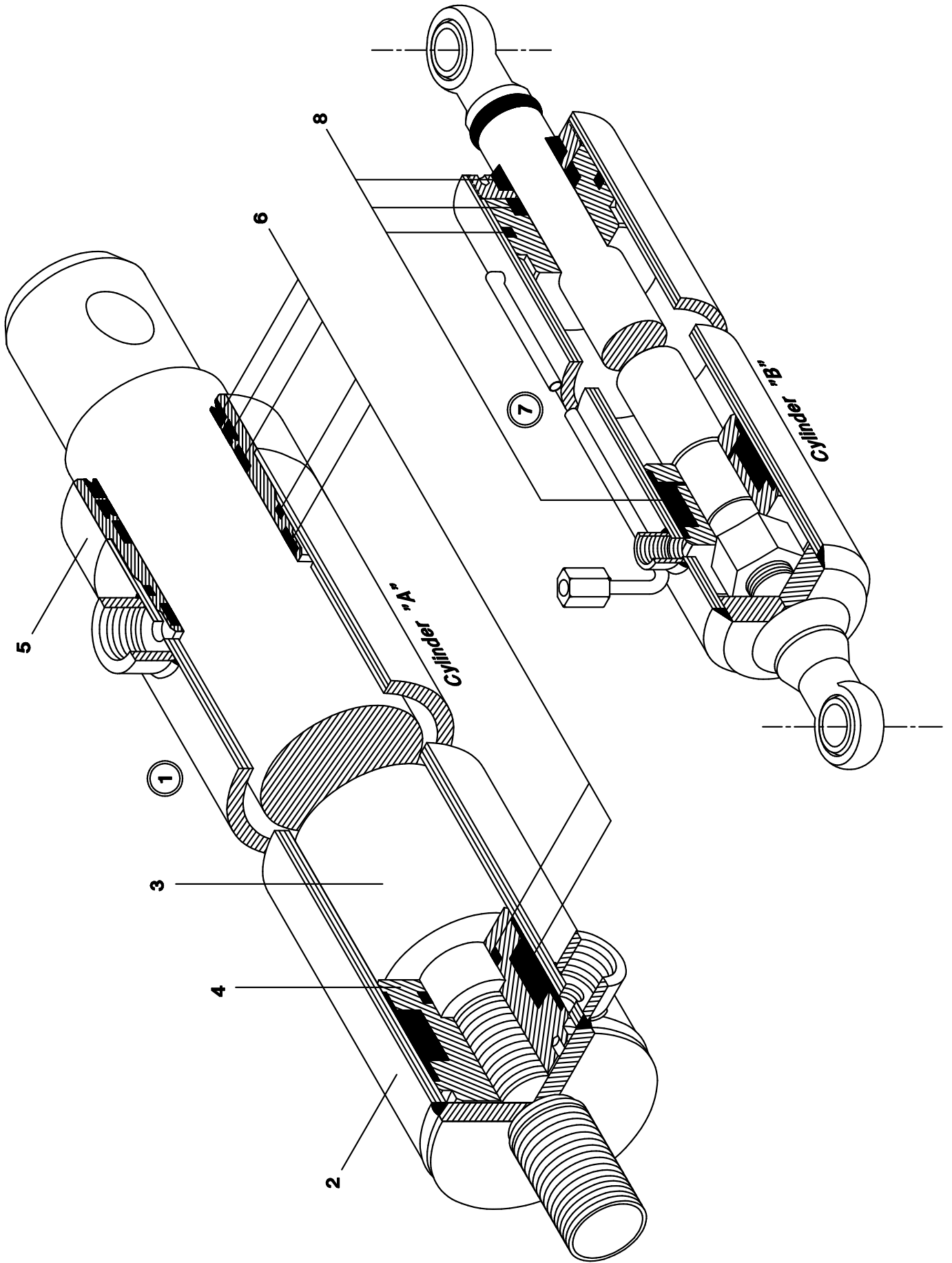


LEFT HAND EXECUTION IS OPPOSITE

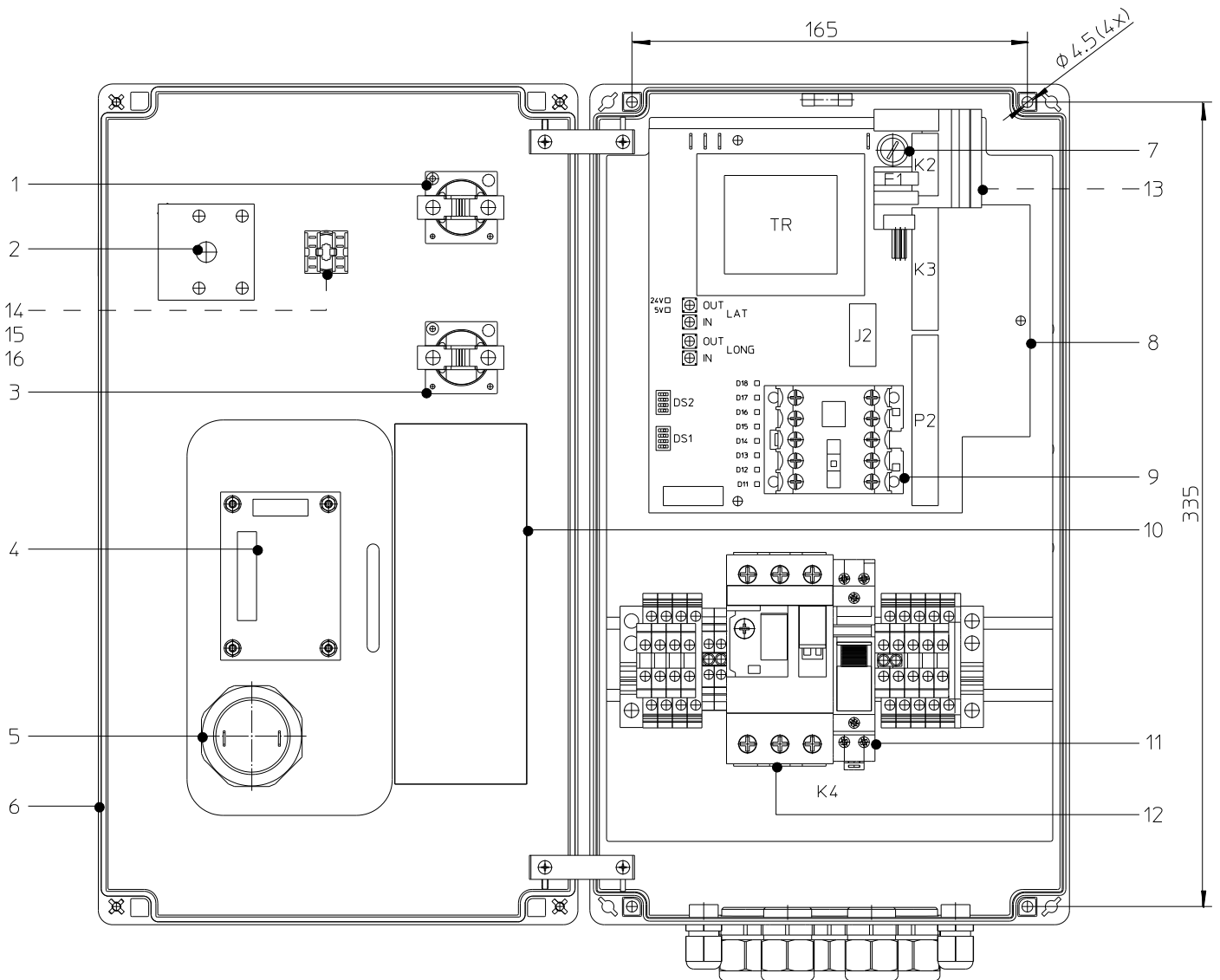
**FIG. C ASSEMBLY HYDRAULIC CYLINDERS “A” AND “B”**

INDEX	REFERENCE	DESCRIPTION
1	03-705-575	Cylinder "A" assembly
2	-	Cylinder tube
3	-	Piston rod
4	-	Piston
5	-	Guide ring
6	-	Seal kit
7	03-700-550	Cylinder "B" assembly
8	-	Seal kit

FIG. C



**FIG. D CONTROL BOX**



INDEX	REFERENCE	DESCRIPTION
	03-710-650	Control box ass'y.
1	69-141-129	LED indicator light red
2	69-120-038	Main-/emergency stop switch
3	69-141-130	LED indicator light green
4	69-900-046	Print circuit board cover
5	69-202-004	Acoustic alarm
6	03-710-652	Cover incl. membrane switches
7	69-206-001	Fuse 630 mAT
8	69-900-040	Printed circuit board Combilok (incl. pos. 9)
9	69-152-009	Motor relay
10	60-700-366	Sticker "Connections and settings"
11	69-156-020	Relay for 24V traffic lights
12	69-130-001	Motor protection switch
13	69-900-041	Additional print traffic lights inside building (OPTION)
14	69-141-134	Key switch (excl. cable tree) (OPTION)
15	69-141-135	Contact block NO (OPTION)
16	69-141-141	Contact block NC (OPTION)

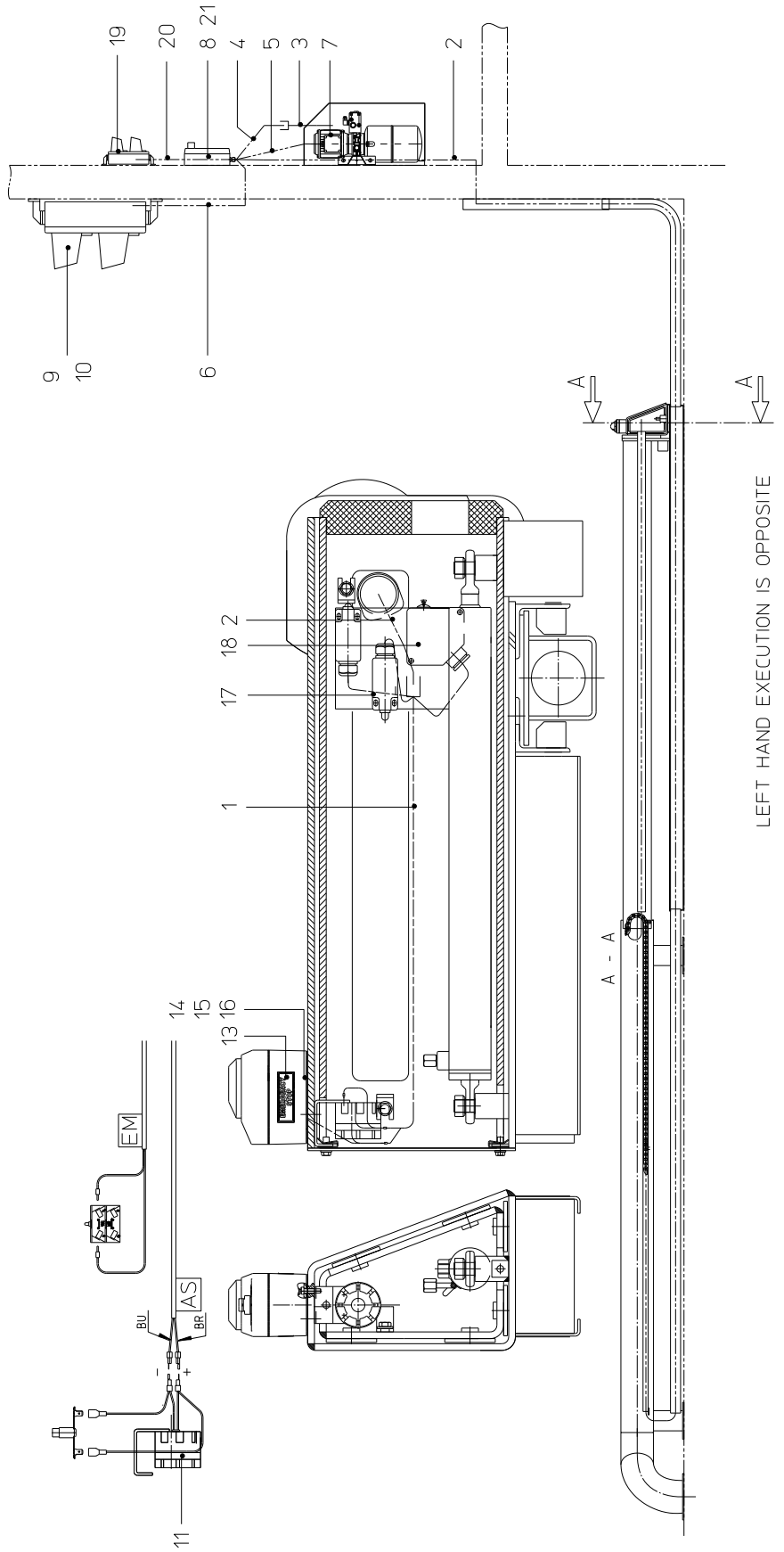


**FIG. E ASSEMBLY ELECTRIC**

INDEX	REFERENCE	DESCRIPTION	INDEX	REFERENCE	DESCRIPTION
1	03-710-663	Electric cable-tree cross head	12	03-710-640	Emergency stop aftermounting kit (incl. 13-16)
2*	03-710-661	Electric cable (20500) Contr. box - Cross head	13	607-00-408	Sticker Emergency stop
3	03-700-604	Cable-tree hydr. unit	14	03-710-641	Seal
4*	03-700-602	Electric cable (2000) Contr. box - Unit	15	1036.23.03.53	Slotted cheese head screw M5x20 (2x)
5*	03-700-606	Motor cable (2000)	16	03-710-642	Emergency stop switch incl. enclosure
6	03-700-605	Traffic light cable	17	1002.17.53.04	Limit switch
7	02-335-602	Earth cable	18	69-205-005	Wheel sensor (photozell)
8	03-710-650	Control box	19**	69-202-038	LED traffic light 230VAC
9	69-202-038	LED traffic light 230VAC	20**	03-710-921	Cable inside traffic lights
11	03-710-630	Acoustical alarm	21**	See FIG. D pos. 13	Additional print traffic lights inside building
			22**	03-710-920	Kit option inside traffic lights (aftermounting)

\*\* = OPTION

\* = Other lengths are optional available



LEFT HAND EXECUTION IS OPPOSITE

**FIG. F ASSEMBLY HYDRAULIC**

<b>INDEX</b>	<b>REFERENCE</b>	<b>DESCRIPTION</b>
1	03-705-541	H.D. Hose Long OUT (A) 11400
2	03-705-542	H.D. Hose Long IN (B) 8150
3A	03-705-543	H.D. Hose Lat IN (A) 11550
3B	03-705-545	H.D. Hose Lat OUT (B) 11550
4A	03-705-544	H.D. Hose Lat IN (A) 7680
4B	03-705-546	H.D. Hose Lat OUT (B) 7680
5	68-700-106	Elbow W 6-PL
7	68-700-410	Straight adaptor GE 6-PL/R1/4"
8	68-700-420	Straight adaptor GE 10-PL/R3/8"
9	68-703-003	Elbow EVW 10-PL

FIG. F

